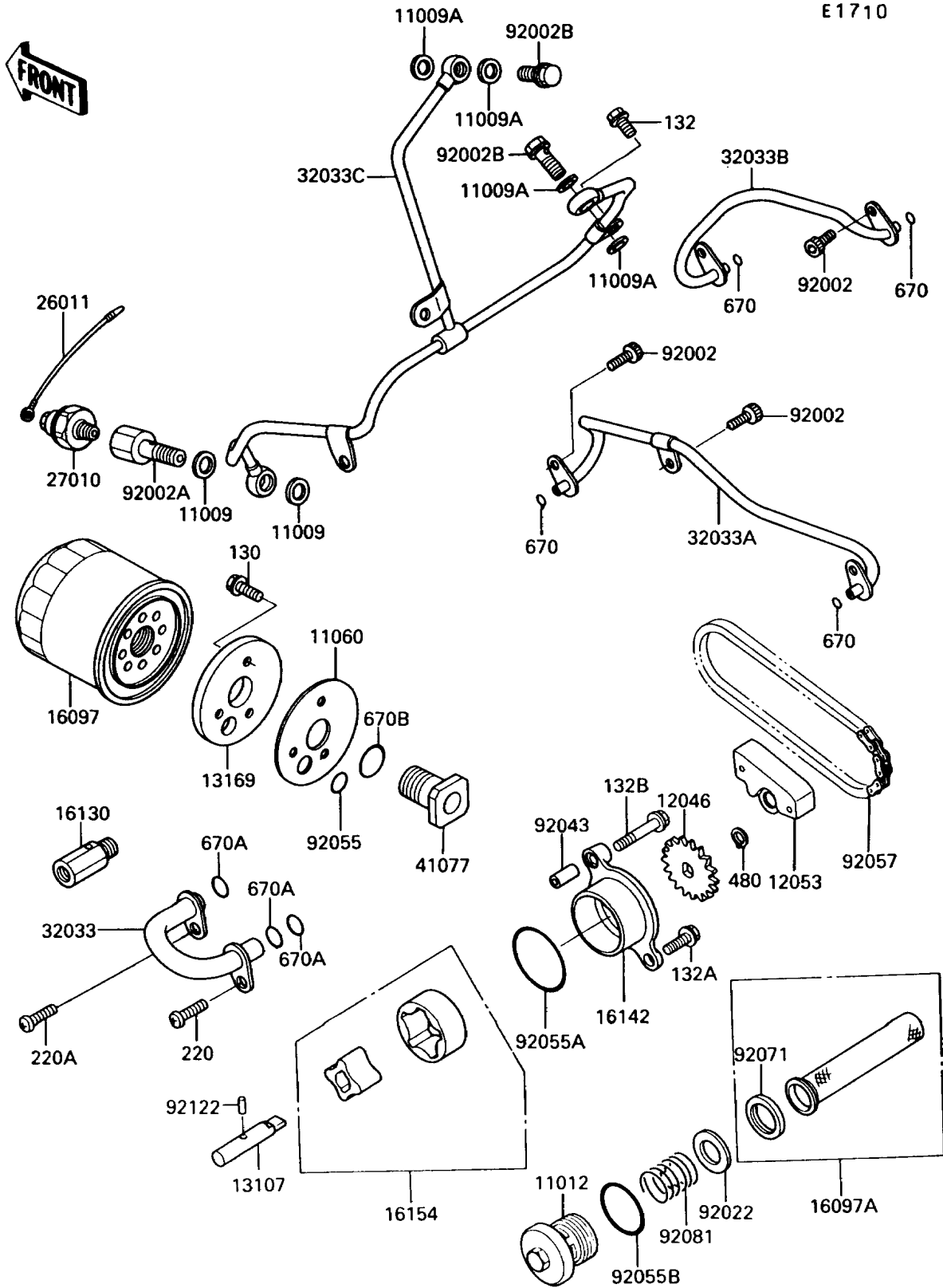


1992 Vulcan 750 PARTS DIAGRAM

Oil Pump



1992 Vulcan 750 PARTS LIST

Oil Pump

| ITEM NAME | PART NUMBER | QUANTITY |
|---|-------------|----------|
| BOLT-FLANGED (Ref # 130) | 130P0514 | 3 |
| BOLT-FLANGED-SMALL (Ref # 132) | 132E0612 | 1 |
| BOLT-FLANGED-SMALL (Ref # 132A) | 132G0616 | 1 |
| BOLT-FLANGED-SMALL (Ref # 132B) | 132G0630 | 1 |
| SCREW-PAN-CROS,6X16 (Ref # 220) | 220B0616 | 1 |
| SCREW-PAN-CROS,6X20,WHITE (Ref # 220A) | 220B0620 | 1 |
| CIRCLIP-TYPE-C,11MM (Ref # 480) | 480J1100 | 1 |
| O RING,6MM (Ref # 670) | 670D1506 | 4 |
| GASKET,10X14.5X1.5 (Ref # 11009) | 11009-1105 | 2 |
| GASKET,OIL PIPE,8.2X14X1.0 (Ref # 11009A) | 11009-1344 | 4 |
| CAP,OIL FILTER (Ref # 11012) | 11012-1483 | 1 |
| GASKET,OIL FILTER (Ref # 11060) | 11060-1092 | 1 |
| SPROCKET,OIL PUMP,19T (Ref # 12046) | 12046-1079 | 1 |
| GUIDE-CHAIN (Ref # 12053) | 12053-1187 | 1 |
| SHAFT,OIL PUMP (Ref # 13107) | 13107-1131 | 1 |
| PLATE,OIL FILTER (Ref # 13169) | 13169-1921 | 1 |
| FILTER-ASSY-OIL (Ref # 16097) | 16097-1054 | 1 |
| FILTER-ASSY-OIL (Ref # 16097A) | 16097-1058 | 1 |
| VALVE-ASSY-RELIEF (Ref # 16130) | 16130-1001 | 1 |
| COVER-PUMP,OIL (Ref # 16142) | 16142-1061 | 1 |
| ROTOR-PUMP (Ref # 16154) | 16154-1056 | 1 |
| WIRE-LEAD (Ref # 26011) | 26011-1295 | 1 |
| SWITCH,OIL PRESSURE (Ref # 27010) | 27010-1155 | 1 |
| PIPE,OIL,PUMP-FILTER (Ref # 32033) | 32033-1479 | 1 |
| PIPE,OIL,FILTER-TRANSMISSION (Ref # 32033A) | 32033-1741 | 1 |
| PIPE,OIL,FILTER-CRANKSHAFT (Ref # 32033B) | 32033-1742 | 1 |
| PIPE,FILTER-HEAD (Ref # 32033C) | 32033-1863 | 1 |
| ADAPTER,OIL FILTER (Ref # 41077) | 41077-1052 | 1 |
| BOLT,SOCKET,6X14 (Ref # 92002) | 92002-1592 | 5 |

1992 Vulcan 750 PARTS LIST

Oil Pump

| ITEM NAME | PART NUMBER | QUANTITY |
|------------------------------------|-------------|----------|
| BOLT,OIL SWITCH (Ref # 92002A) | 92002-1617 | 1 |
| BOLT,BANJO,8X20 (Ref # 92002B) | 92002-1618 | 2 |
| WASHER,16.5X28X0.5 (Ref # 92022) | 92022-169 | 1 |
| PIN,6.2X8X14 (Ref # 92043) | 92043-1263 | 1 |
| RING-O,13X1.9 (Ref # 92055) | 92055-1021 | 1 |
| RING-O,44.7X2.4 (Ref # 92055A) | 92055-1279 | 1 |
| RING-O,35.2X2.4 (Ref # 92055B) | 92055-1358 | 1 |
| CHAIN,PUMP,BS25HX50L (Ref # 92057) | 92057-1183 | 1 |
| GROMMET,OIL STRAINER (Ref # 92071) | 92071-100 | 1 |
| SPRING,OIL FILTER (Ref # 92081) | 92081-1862 | 1 |
| ROLLER,3X15.8 (Ref # 92122) | 92122-1126 | 1 |
| O RING,12MM (Ref # 670A) | 670D2012 | 3 |
| O RING,20MM (Ref # 670B) | 670D2020 | 1 |