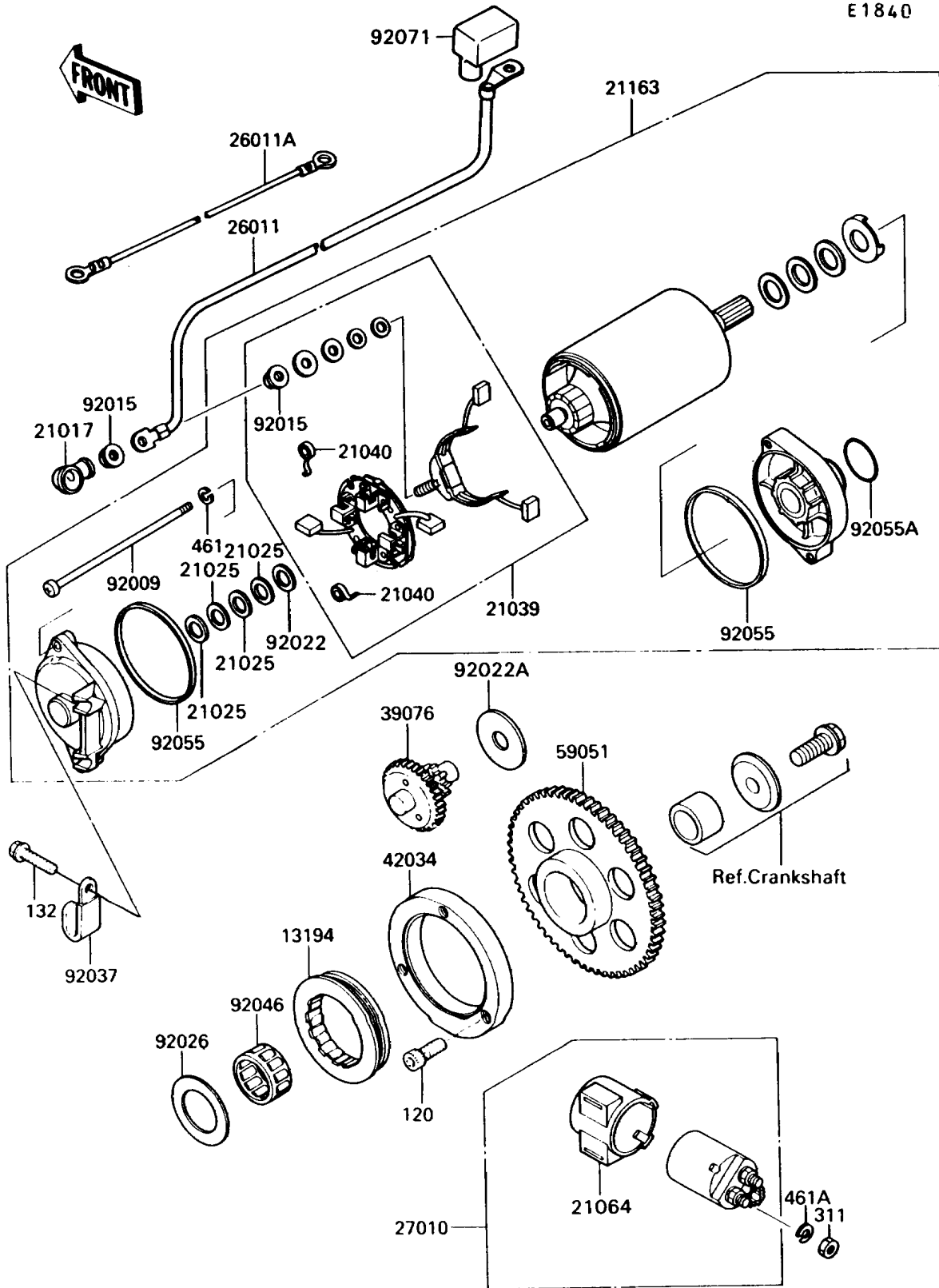


1990 Vulcan 750 PARTS DIAGRAM

Starter Motor



1990 Vulcan 750 PARTS LIST

Starter Motor

| ITEM NAME | PART NUMBER | QUANTITY |
|---|-------------|----------|
| BOLT-SOCKET,8X20 (Ref # 120) | 120Q0820 | 3 |
| BOLT-FLANGED-SMALL (Ref # 132) | 132J0625 | 2 |
| NUT-HEX,6MM (Ref # 311) | 311B0600 | 2 |
| WASHER-SPRING,5MM (Ref # 461) | 461F0500 | 2 |
| WASHER-SPRING,6MM (Ref # 461A) | 461F0600 | 2 |
| CLUTCH-ONEWAY (Ref # 13194) | 13194-1085 | 1 |
| GROMMET,STARTER TERMINAL (Ref # 21017) | 21017-017 | 1 |
| WASHER,9.1X18X0.2 (Ref # 21025) | 21025-011 | 4 |
| BRUSH,CARBON (Ref # 21039) | 21039-1053 | 1 |
| SPRING-BRUSH (Ref # 21040) | 21040-1003 | 4 |
| DAMPER,MAGNETIC SWITCH (Ref # 21064) | 21064-002 | 1 |
| STARTER-ELECTRIC (Ref # 21163) | 21163-1068 | 1 |
| WIRE-LEAD,STARTER MOTOR (Ref # 26011) | 26011-1276 | 1 |
| WIRE-LEAD,BATTERY GROUND (Ref # 26011A) | 26011-1320 | 1 |
| SWITCH,MAGNETIC (Ref # 27010) | 27010-1209 | 1 |
| LIMITER,STARTER IDLE GEAR (Ref # 39076) | 39076-1051 | 1 |
| COUPLING (Ref # 42034) | 42034-1081 | 1 |
| GEAR-SPUR,STARTER,63T (Ref # 59051) | 59051-1130 | 1 |
| SCREW (Ref # 92009) | 92009-1369 | 2 |
| NUT,STARTER MOTOR (Ref # 92015) | 92015-1476 | 2 |
| WASHER,9.1X18X0.8 (Ref # 92022) | 92022-1132 | 1 |
| WASHER,12.3X38X2.0 (Ref # 92022A) | 92022-1664 | 1 |
| SPACER,29.1X47.5X1.2 (Ref # 92026) | 92026-087 | 1 |
| CLAMP,WIRING HARNESS (Ref # 92037) | 92037-1539 | 1 |
| BEARING-NEEDLE (Ref # 92046) | 92046-1137 | 1 |
| RING-O,64MM (Ref # 92055) | 92055-1086 | 2 |
| RING-O (Ref # 92055A) | 92055-1276 | 1 |
| GROMMET,TERMINAL (Ref # 92071) | 92071-1130 | 1 |