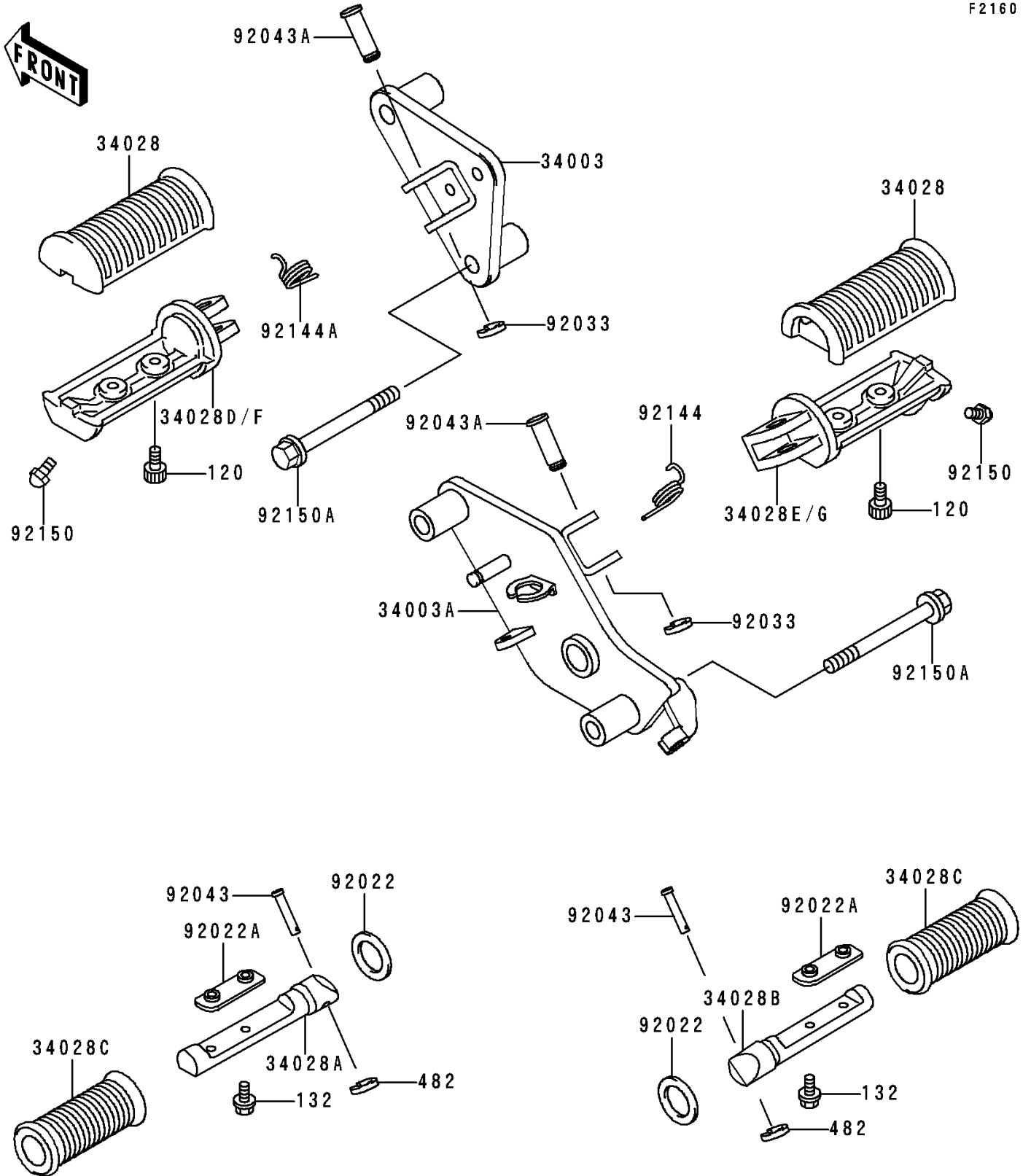


# 1997 Vulcan 800 PARTS DIAGRAM

Footrests

F2160



# 1997 Vulcan 800 PARTS LIST

## Footrests

| ITEM NAME                         | PART NUMBER | QUANTITY |
|-----------------------------------|-------------|----------|
| BOLT-SOCKET (Ref # 120)           | 120S0512    | 4        |
| BOLT-FLANGED-SMALL (Ref # 132)    | 132J0510    | 4        |
| CIRCLIP-TYPE-E (Ref # 482)        | 482L7000    | 2        |
| HOLDER-STEP,FR,LH (Ref # 34003)   | 34003-1413  | 1        |
| HOLDER-STEP,FR,RH (Ref # 34003A)  | 34003-1414  | 1        |
| STEP,FR,RUBBER (Ref # 34028)      | 34028-1217  | 2        |
| STEP,RR,LH (Ref # 34028A)         | 34028-1219  | 1        |
| STEP,RR,RH (Ref # 34028B)         | 34028-1220  | 1        |
| STEP,RR,RUBBER (Ref # 34028C)     | 34028-1221  | 2        |
| STEP,FR,LH (Ref # 34028F)         | 34028-1407  | 1        |
| STEP,FR,RH (Ref # 34028G)         | 34028-1408  | 1        |
| WASHER,20X30X2.3 (Ref # 92022)    | 92022-1568  | 2        |
| WASHER,STEP (Ref # 92022A)        | 92022-1874  | 2        |
| RING-SNAP,10MM (Ref # 92033)      | 92033-1166  | 2        |
| PIN,8X36.5 (Ref # 92043)          | 92043-1339  | 2        |
| PIN,12X37 (Ref # 92043A)          | 92043-1358  | 2        |
| SPRING,STEP RETURN (Ref # 92144)  | 92144-1126  | 1        |
| SPRING,STEP RETURN (Ref # 92144A) | 92144-1210  | 1        |
| BOLT,6X10 (Ref # 92150)           | 92150-1153  | 2        |
| BOLT,FLANGED,10X55 (Ref # 92150A) | 92150-1897  | 4        |