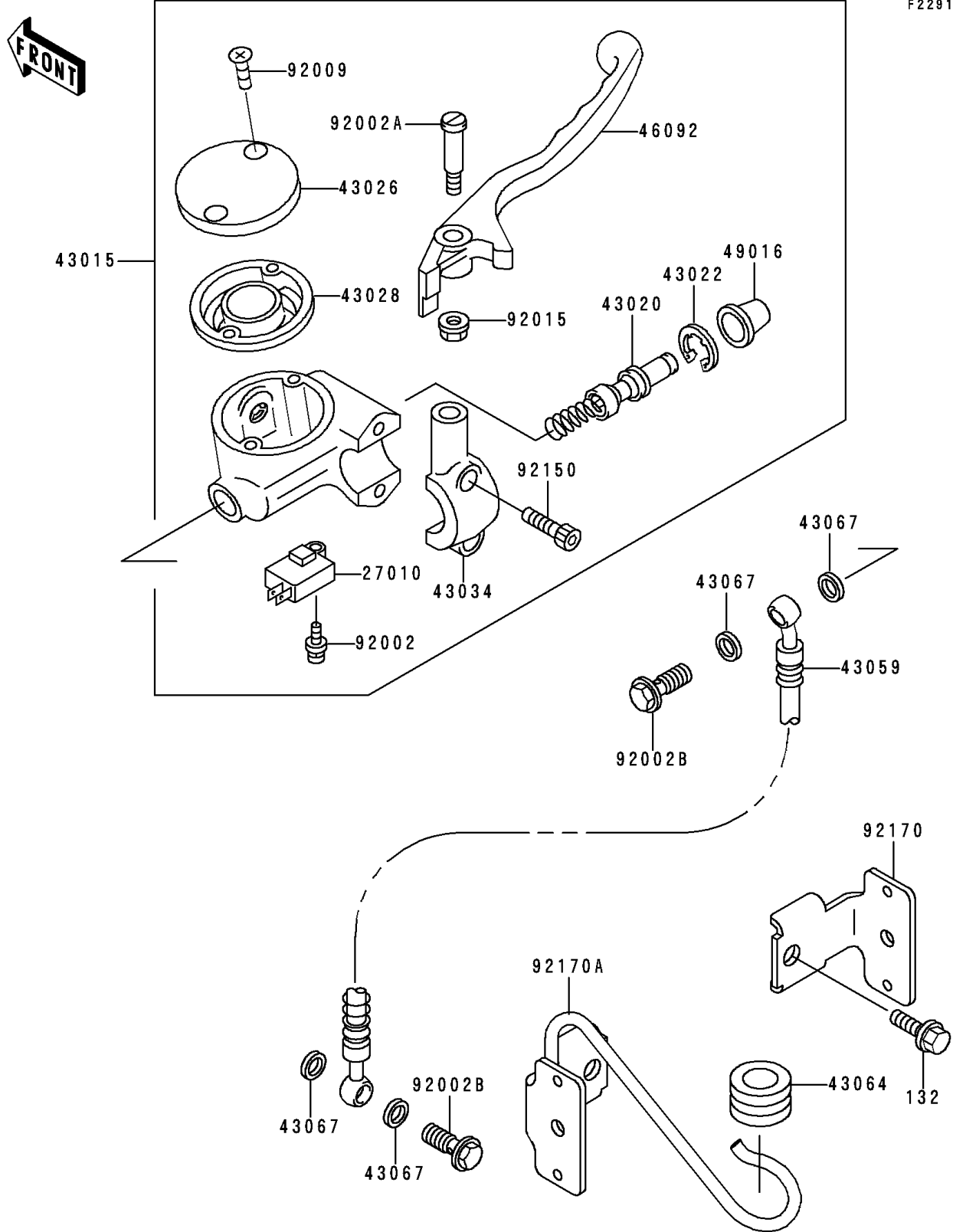


# 1995 Vulcan 800 PARTS DIAGRAM

## Front Master Cylinder

F2291



# 1995 Vulcan 800 PARTS LIST

## Front Master Cylinder

| ITEM NAME                                | PART NUMBER | QUANTITY |
|------------------------------------------|-------------|----------|
| BOLT-FLANGED-SMALL (Ref # 132)           | 132E0610    | 2        |
| SWITCH,BRAKE (Ref # 27010)               | 27010-1170  | 1        |
| CYLINDER-ASSY-MASTER,FR (Ref # 43015)    | 43015-1511  | 1        |
| PISTON-COMP-BRAKE (Ref # 43020)          | 43020-1098  | 1        |
| STOPPER-BRAKE,PISTON (Ref # 43022)       | 43022-1010  | 1        |
| CAP-BRAKE,SILVER (Ref # 43026)           | 43026-1078  | 1        |
| DIAPHRAGM,MASTER CYLINDER (Ref # 43028)  | 43028-1071  | 1        |
| HOLDER-BRAKE,SILVER (Ref # 43034)        | 43034-1102  | 1        |
| HOSE-BRAKE,FR (Ref # 43059)              | 43059-1894  | 1        |
| GROMMET,HOSE CLAMP (Ref # 43064)         | 43064-006   | 1        |
| WASHER,10.5X15X1.5 (Ref # 43067)         | 43067-001   | 4        |
| LEVER-GRIP,FRONT BRAKE (Ref # 46092)     | 46092-1172  | 1        |
| COVER-SEAL,MASTER CYLINDER (Ref # 49016) | 49016-1044  | 1        |
| BOLT,SCREW,4X12 (Ref # 92002)            | 92002-1323  | 1        |
| BOLT,LEVER SET (Ref # 92002A)            | 92002-1561  | 1        |
| BOLT,OIL,L=23 (Ref # 92002B)             | 92002-1888  | 2        |
| SCREW,5MM (Ref # 92009)                  | 92009-1440  | 2        |
| NUT,FLANGED,6MM (Ref # 92015)            | 92015-1528  | 1        |
| BOLT,SOCKET,6MM (Ref # 92150)            | 92150-1025  | 2        |
| CLAMP,HOSE (Ref # 92170)                 | 92170-1554  | 1        |
| CLAMP,HOSE (Ref # 92170A)                | 92170-1611  | 1        |