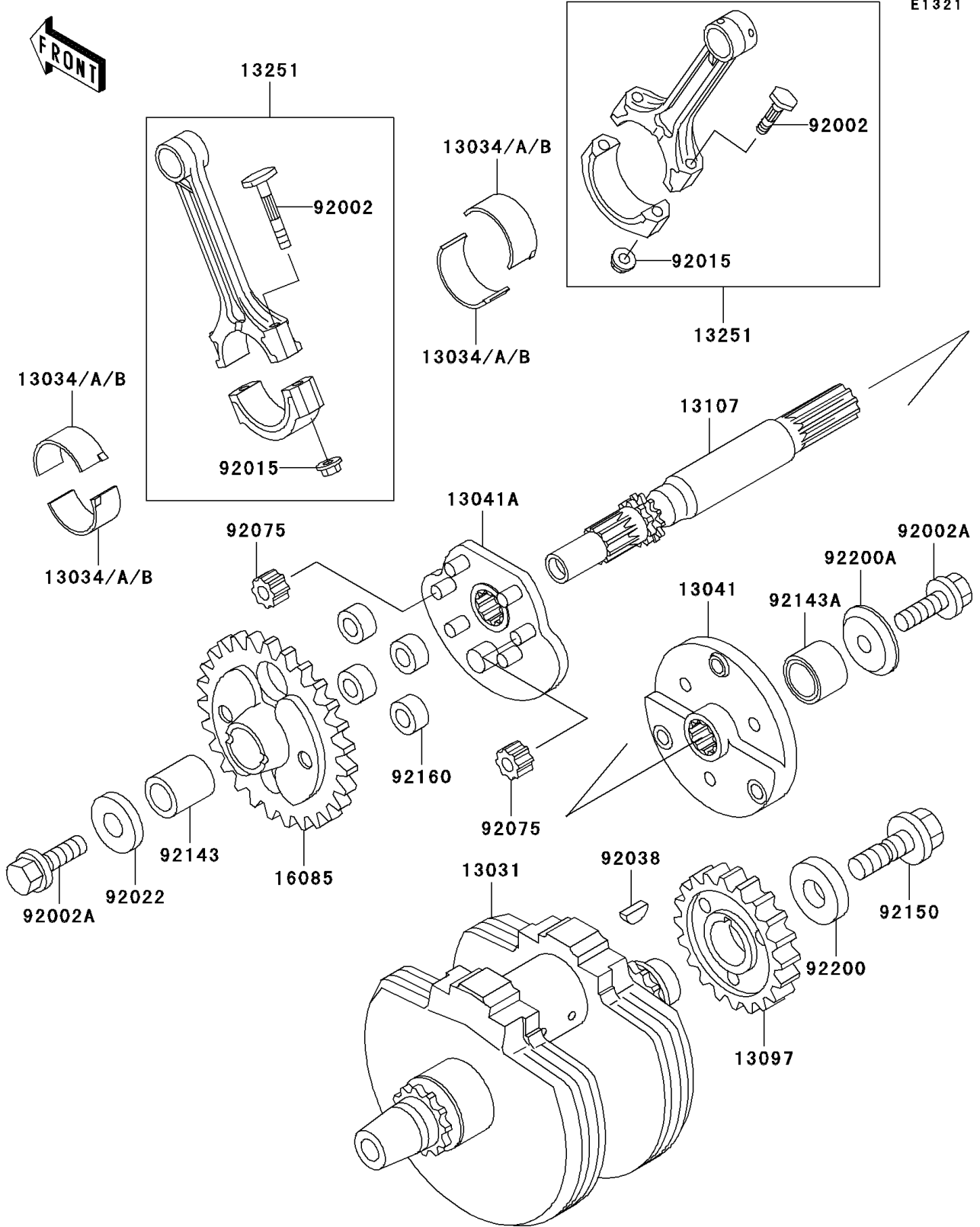


2003 Vulcan 800 PARTS DIAGRAM

Crankshaft



2003 Vulcan 800 PARTS LIST

Crankshaft

ITEM NAME	PART NUMBER	QUANTITY
CRANKSHAFT-COMP (Ref # 13031)	13031-1398	1
METAL,CONNECTING ROD,BLUE (Ref # 13034)	13034-1057	AR
METAL,CONNECTING ROD,BLACK (Ref # 13034A)	13034-1058	AR
METAL,CONNECTING ROD,BROWN (Ref # 13034B)	13034-1059	AR
BALANCER,RH (Ref # 13041)	13041-1112	1
BALANCER,LH (Ref # 13041A)	13041-1113	1
GEAR-PRIMARY SPUR,38T (Ref # 13097)	13097-1335	1
SHAFT,BALANCER (Ref # 13107)	13107-1336	1
ROD-ASSY-CONNECTING,G (Ref # 13251)	13251-1055-GG	2
GEAR (Ref # 16085)	16085-1279	1
BOLT,CONNECTING ROD (Ref # 92002)	92002-1405	4
BOLT,10X30 (Ref # 92002A)	92002-1697	2
NUT,CONNECTING ROD (Ref # 92015)	92015-1481	4
WASHER,RH,10X33X9 (Ref # 92022)	92022-1906	1
KEY (Ref # 92038)	92038-1059	1
DAMPER (Ref # 92075)	92075-1748	2
COLLAR (Ref # 92143)	92143-1736	1
COLLAR (Ref # 92143A)	92143-1743	1
BOLT,12X40 (Ref # 92150)	92150-1717	1
DAMPER (Ref # 92160)	92160-1582	4
WASHER (Ref # 92200)	92200-1249	1
WASHER (Ref # 92200A)	92200-1250	1