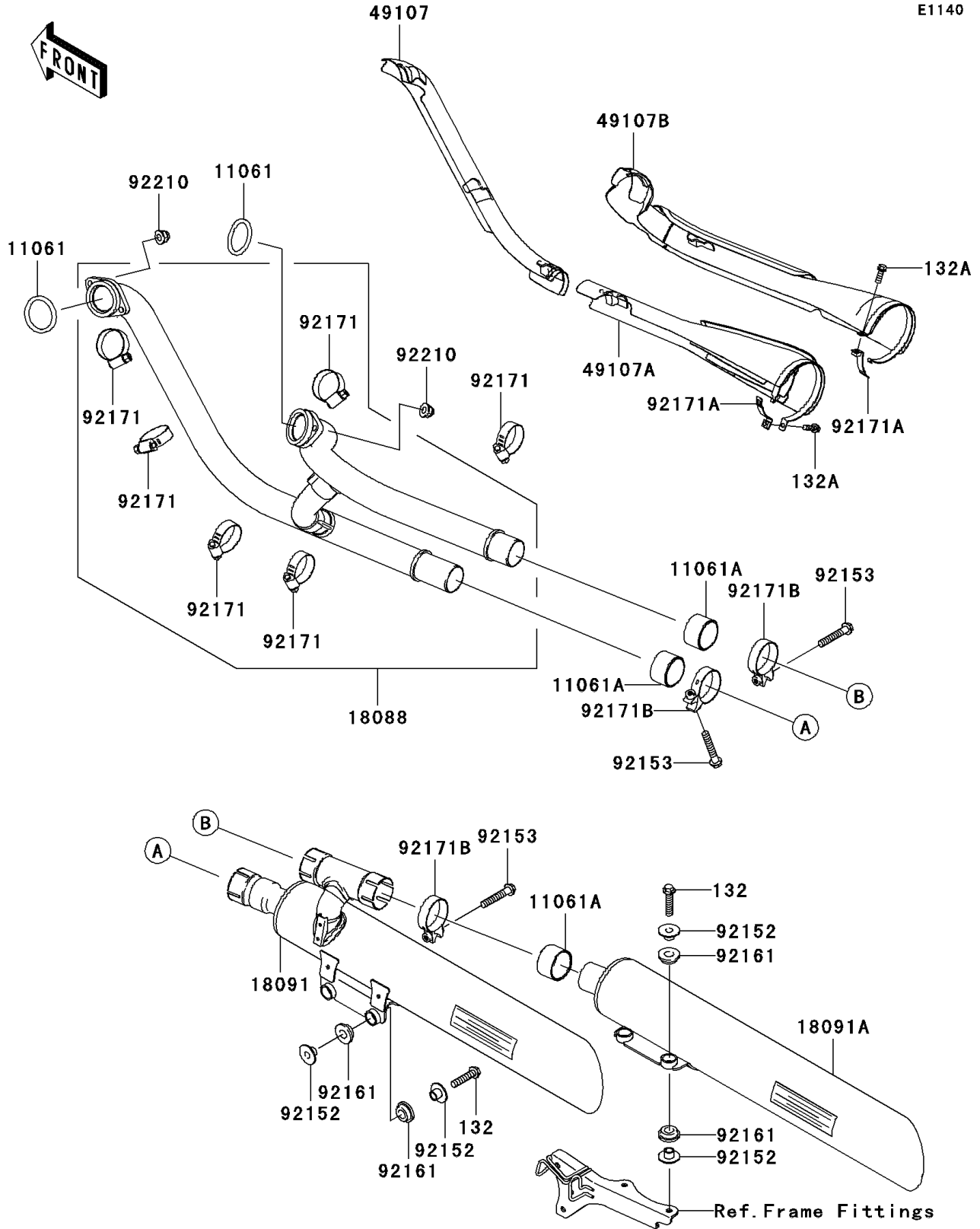


# 2010 Vulcan® 2000 Classic LT PARTS DIAGRAM

Muffler(s)

E1140



## 2010 Vulcan® 2000 Classic LT PARTS LIST

### Muffler(s)

| ITEM NAME                                | PART NUMBER | QUANTITY |
|--|-------------|----------|
| BOLT-FLANGED-SMALL,8X35 (Ref # 132)      | 132BB0835   | 4        |
| BOLT-FLANGED-SMALL,6X20 (Ref # 132A)     | 132BC0620   | 2        |
| GASKET,EXHAUST PIPE (Ref # 11061)        | 11061-0013  | 2        |
| GASKET,MUFFLER CONNECTING (Ref # 11061A) | 11061-0240  | 3        |
| PIPE-EXHAUST (Ref # 18088)               | 18088-0452  | 1        |
| BODY-COMP-MUFFLER,LWR (Ref # 18091)      | 18091-0527  | 1        |
| BODY-COMP-MUFFLER,UPP (Ref # 18091A)     | 18091-0528  | 1        |
| COVER-EXHAUST PIPE,FR,FR (Ref # 49107)   | 49107-0005  | 1        |
| COVER-EXHAUST PIPE,FR,RR (Ref # 49107A)  | 49107-0033  | 1        |
| COVER-EXHAUST PIPE,RR (Ref # 49107B)     | 49107-0048  | 1        |
| COLLAR,8.8X12X10.6 (Ref # 92152)         | 92152-0082  | 8        |
| BOLT,8X45 (Ref # 92153)                  | 92153-0702  | 3        |
| DAMPER (Ref # 92161)                     | 92161-0135  | 8        |
| CLAMP (Ref # 92171)                      | 92171-0072  | 6        |
| CLAMP (Ref # 92171A)                     | 92171-0294  | 2        |
| CLAMP (Ref # 92171B)                     | 92171-0358  | 3        |
| NUT,CAP,8MM (Ref # 92210)                | 92210-1132  | 4        |