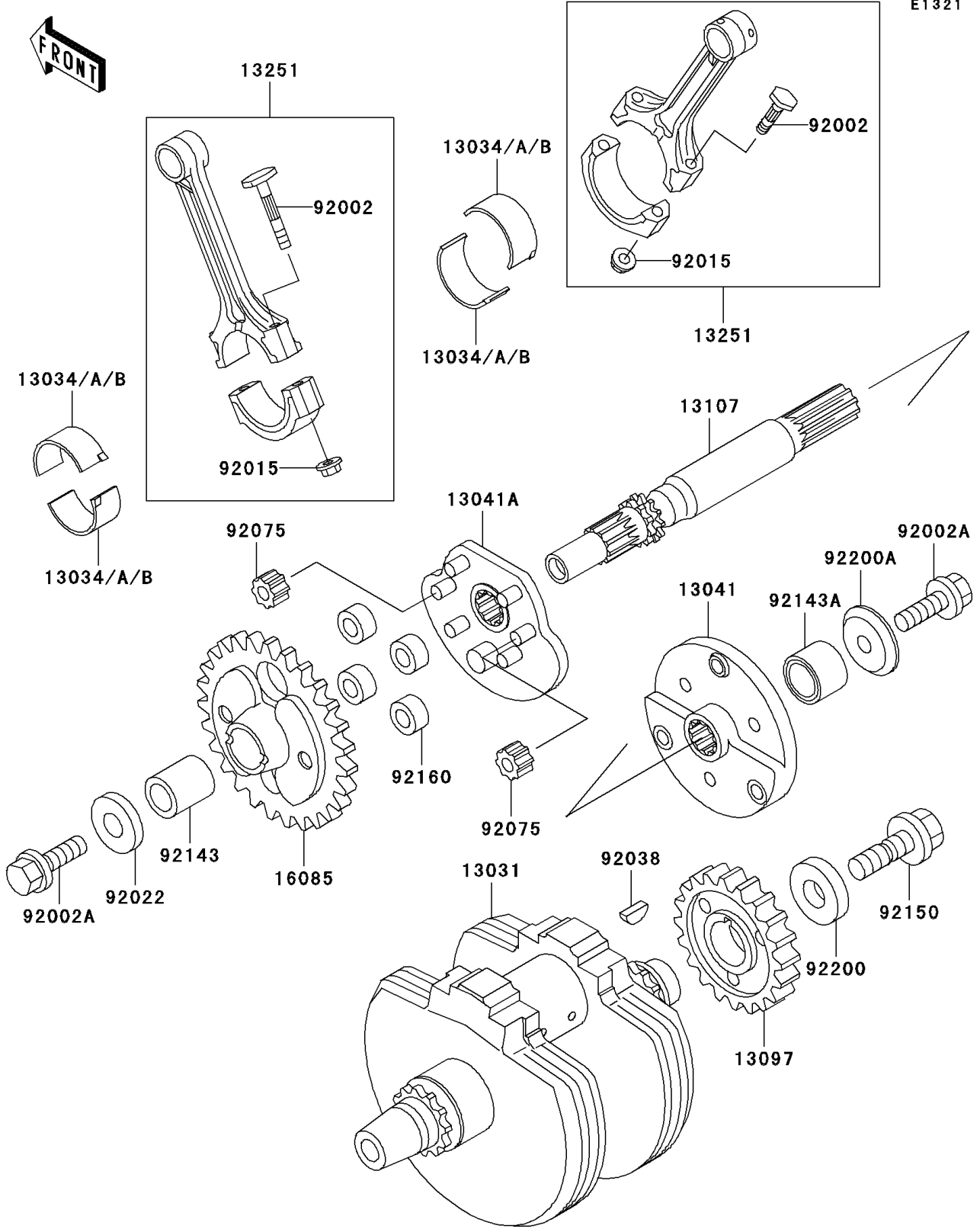


1999 Vulcan 800 Classic PARTS DIAGRAM

Crankshaft

E1321



1999 Vulcan 800 Classic PARTS LIST

Crankshaft

| ITEM NAME | PART NUMBER | QUANTITY |
|---|---------------|----------|
| CRANKSHAFT-COMP (Ref # 13031) | 13031-1398 | 1 |
| METAL,CONNECTING ROD,BLUE (Ref # 13034) | 13034-1057 | AR |
| METAL,CONNECTING ROD,BLACK (Ref # 13034A) | 13034-1058 | AR |
| METAL,CONNECTING ROD,BROWN (Ref # 13034B) | 13034-1059 | AR |
| BALANCER,RH (Ref # 13041) | 13041-1112 | 1 |
| BALANCER,LH (Ref # 13041A) | 13041-1113 | 1 |
| GEAR-PRIMARY SPUR,38T (Ref # 13097) | 13097-1335 | 1 |
| SHAFT,BALANCER (Ref # 13107) | 13107-1336 | 1 |
| ROD-ASSY-CONNECTING,G (Ref # 13251) | 13251-1055-GG | 2 |
| GEAR (Ref # 16085) | 16085-1279 | 1 |
| BOLT,CONNECTING ROD (Ref # 92002) | 92002-1405 | 4 |
| BOLT,10X30 (Ref # 92002A) | 92002-1697 | 2 |
| NUT,CONNECTING ROD (Ref # 92015) | 92015-1481 | 4 |
| WASHER,RH,10X33X9 (Ref # 92022) | 92022-1906 | 1 |
| KEY (Ref # 92038) | 92038-1059 | 1 |
| DAMPER (Ref # 92075) | 92075-1748 | 2 |
| COLLAR (Ref # 92143) | 92143-1736 | 1 |
| COLLAR (Ref # 92143A) | 92143-1743 | 1 |
| BOLT,12X40 (Ref # 92150) | 92150-1717 | 1 |
| DAMPER (Ref # 92160) | 92160-1582 | 4 |
| WASHER (Ref # 92200) | 92200-1249 | 1 |
| WASHER (Ref # 92200A) | 92200-1250 | 1 |