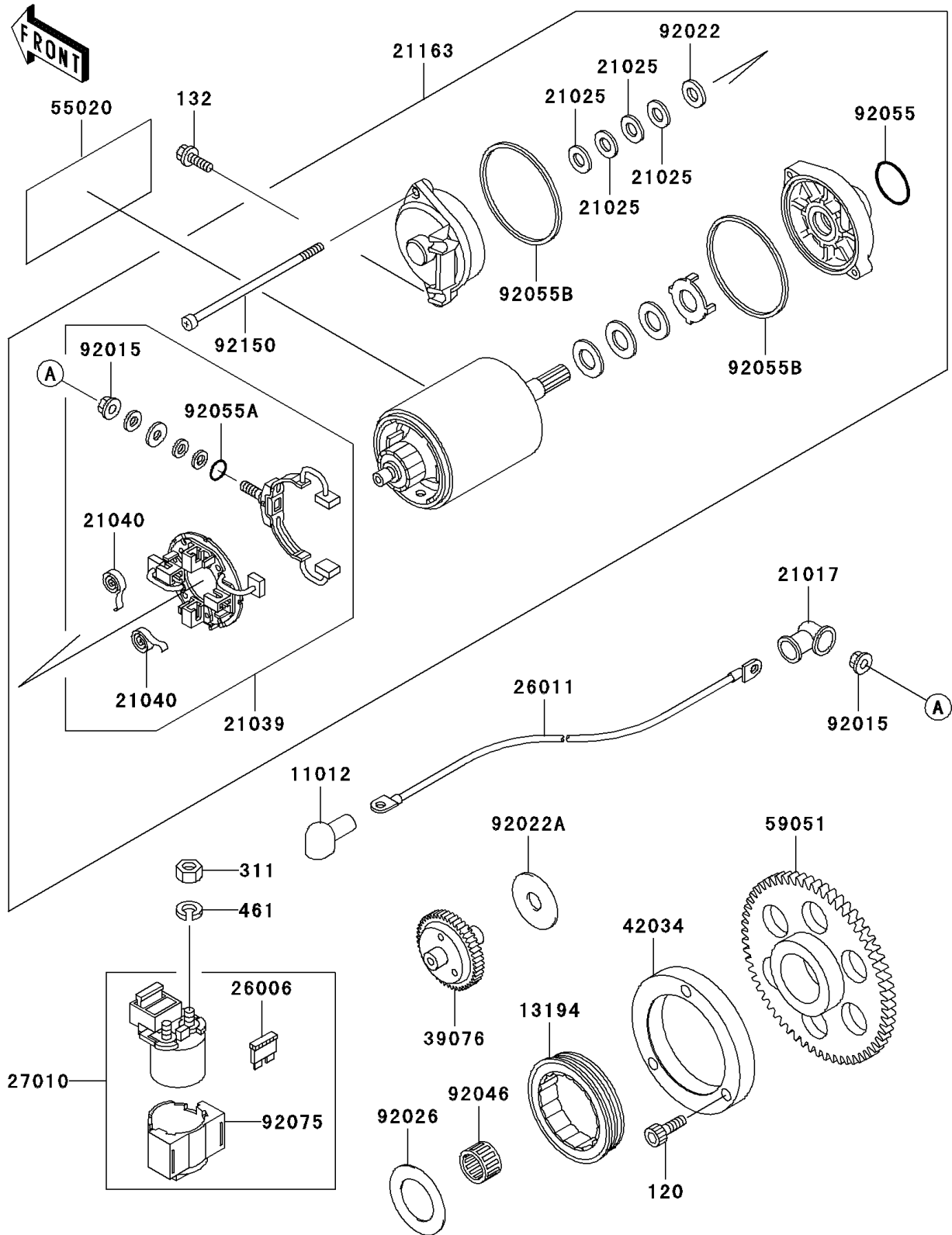


1999 Vulcan 800 Classic PARTS DIAGRAM

Starter Motor

E1840



1999 Vulcan 800 Classic PARTS LIST

Starter Motor

ITEM NAME	PART NUMBER	QUANTITY
BOLT-SOCKET,8X20 (Ref # 120)	120Q0820	3
BOLT-FLANGED-SMALL (Ref # 132)	132J0625	2
NUT-HEX,6MM (Ref # 311)	311B0600	2
WASHER-SPRING,6MM (Ref # 461)	461F0600	2
CAP,TERMINAL (Ref # 11012)	11012-1354	1
CLUTCH-ONEWAY (Ref # 13194)	13194-1085	1
GROMMET,STARTER TERMINAL (Ref # 21017)	21017-017	1
WASHER,9.1X18X0.2 (Ref # 21025)	21025-011	AR
BRUSH,CARBON (Ref # 21039)	21039-1060	1
SPRING-BRUSH (Ref # 21040)	21040-1055	4
STARTER-ELECTRIC (Ref # 21163)	21163-1263	1
FUSE,30A-G (Ref # 26006)	26006-1006	1
WIRE-LEAD (Ref # 26011)	26011-1628	1
SWITCH,MAGNETIC (Ref # 27010)	27010-1213	1
LIMITER,STARTER IDLE GEAR (Ref # 39076)	39076-1070	1
COUPLING (Ref # 42034)	42034-1143	1
GUARD,STARTER MOTER (Ref # 55020)	55020-1589	1
GEAR-SPUR,STARTER,63T (Ref # 59051)	59051-1130	1
NUT,STARTER MOTOR (Ref # 92015)	92015-1476	2
WASHER,9.1X18X0.8 (Ref # 92022)	92022-1132	1
WASHER,12.3X38X2.0 (Ref # 92022A)	92022-1664	1
SPACER,29.1X47.5X1.2 (Ref # 92026)	92026-087	1
BEARING-NEEDLE (Ref # 92046)	92046-1137	1
RING-O (Ref # 92055)	92055-1276	1
RING-O,4.5X2.0 (Ref # 92055A)	92055-1370	1
RING-O,STARTER MOTOR (Ref # 92055B)	92055-1381	2
DAMPER,MAGNETIC SWITCH (Ref # 92075)	92075-1863	1
BOLT,STARTER MOTOR (Ref # 92150)	92150-1913	2