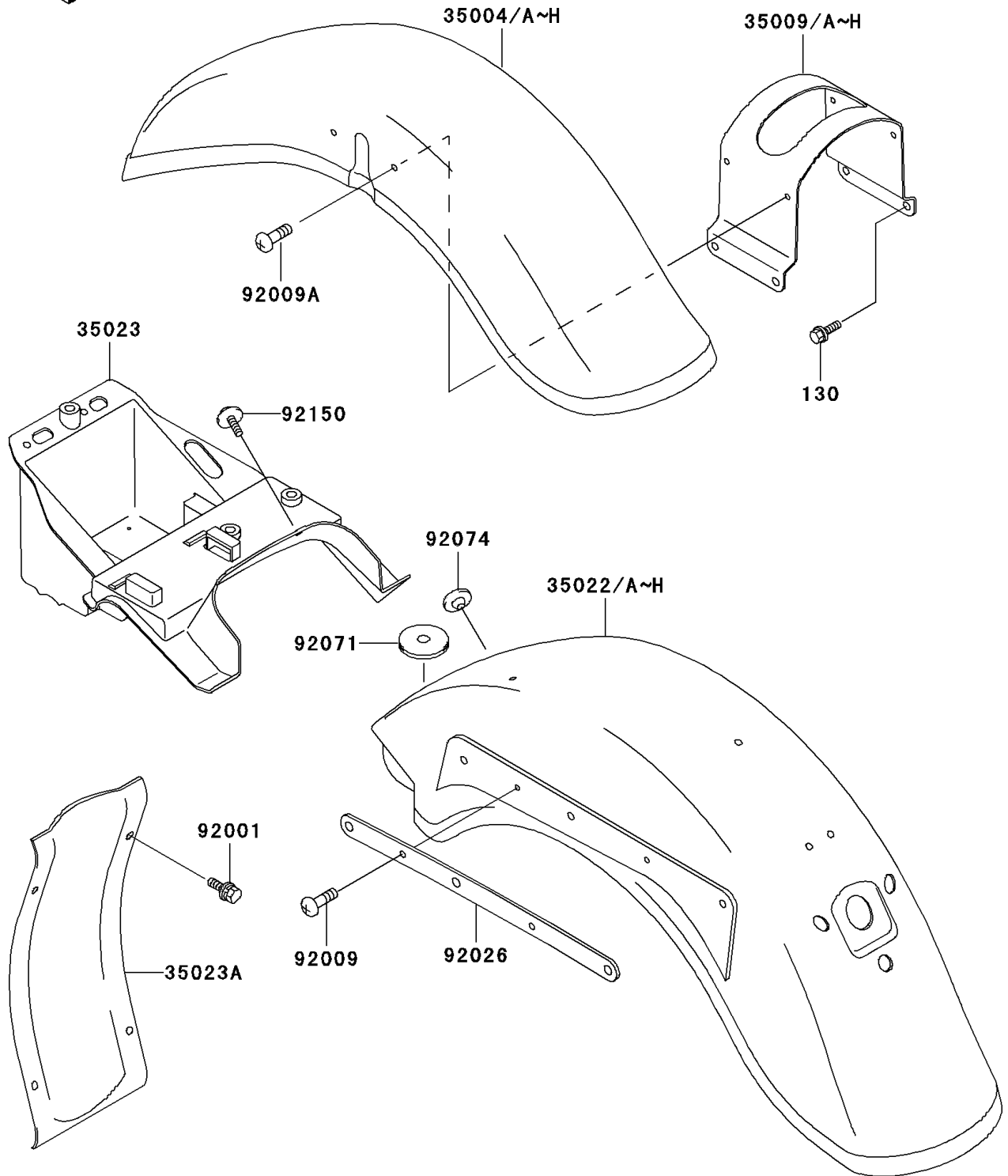


# 1998 Vulcan 800 Classic PARTS DIAGRAM

Fenders(VN800-B1/B2/B3)

F2170



# 1998 Vulcan 800 Classic PARTS LIST

Fenders(VN800-B1/B2/B3)

ITEM NAME	PART NUMBER	QUANTITY
BOLT-FLANGED,8X14 (Ref # 130)	130J0814	4
FENDER-REAR,FR (Ref # 35023)	35023-1407	1
FENDER-REAR (Ref # 35023A)	35023-1417	1
BOLT,6X20 (Ref # 92001)	92001-1765	4
SCREW,6X10 (Ref # 92009)	92009-1402	4
SCREW,6X12 (Ref # 92009A)	92009-1744	4
SPACER,RR FENDER (Ref # 92026)	92026-1476	2
GROMMET (Ref # 92071)	92071-1228	2
PLUG,7X2 (Ref # 92074)	92074-028	1
BOLT,6X14 (Ref # 92150)	92150-1133	2
FENDER-FRONT,C.W.RED (Ref # 35004B)	35004-1335-H3	1
FENDER-FRONT,C.W.RED (Ref # 35004D)	35004-1335-TF	1
FENDER-FRONT,P.BOULOGNE (Ref # 35004E)	35004-1335-VG	1
FENDER-FRONT,P.BOULOGE (Ref # 35004H)	35004-1335-7X	1
BRACE,FRONT FENDER,C.W.RED (Ref # 35009B)	35009-1111-H3	1
BRACE,FRONT FENDER,C.W.RED (Ref # 35009D)	35009-1111-TF	1
BRACE,FRONT FENDER,P.BOULOGNE (Ref # 35009E)	35009-1111-VG	1
BRACE,FRONT FENDER,P.BOULOGE (Ref # 35009H)	35009-1111-7X	1
FENDER-COMP-REAR,RR,C.W.RED (Ref # 35022B)	35022-1319-H3	1
FENDER-COMP-REAR,RR,C.W.RED (Ref # 35022D)	35022-1319-TF	1
FENDER-COMP-REAR,RR,P.BOULOGNE (Ref # 35022E)	35022-1319-VG	1
FENDER-COMP-REAR,RR,P.BOULOGE (Ref # 35022H)	35022-1319-7X	1