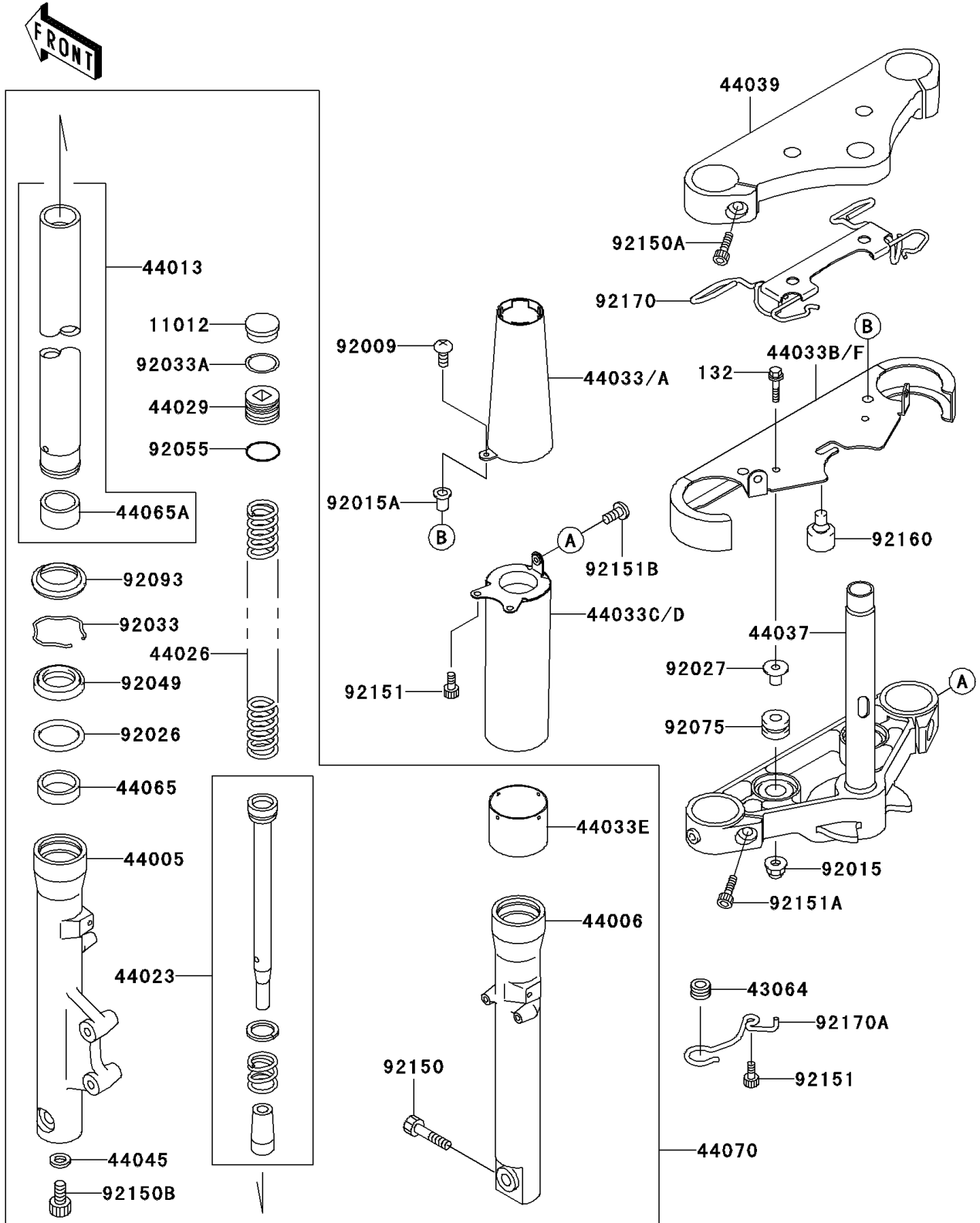


# 1996 Vulcan 800 Classic PARTS DIAGRAM

Front Fork

F2340



# 1996 Vulcan 800 Classic PARTS LIST

## Front Fork

| ITEM NAME                                    | PART NUMBER | QUANTITY |
|--|-------------|----------|
| CAP,FORK TOP (Ref # 11012)                   | 11012-1618  | 2        |
| GROMMET,HOSE CLAMP (Ref # 43064)             | 43064-006   | 1        |
| PIPE-LEFT FORK OUTER (Ref # 44005)           | 44005-1366  | 1        |
| PIPE-RIGHT FORK OUTER (Ref # 44006)          | 44006-1365  | 1        |
| PIPE-FORK INNER (Ref # 44013)                | 44013-1426  | 2        |
| CYLINDER-COMP-FORK (Ref # 44023)             | 44023-1103  | 2        |
| SPRING-FRONT FORK (Ref # 44026)              | 44026-1615  | 2        |
| SEAT-FORK SPRING (Ref # 44029)               | 44029-1125  | 2        |
| COVER-FORK,UPP,LH (Ref # 44033)              | 44033-1215  | 1        |
| COVER-FORK,UPP,RH (Ref # 44033A)             | 44033-1216  | 1        |
| COVER-FORK,LWR (Ref # 44033B)                | 44033-1217  | 1        |
| COVER-FORK,UNDER,LH (Ref # 44033C)           | 44033-1221  | 1        |
| COVER-FORK,UNDER,RH (Ref # 44033D)           | 44033-1222  | 1        |
| COVER-FORK (Ref # 44033E)                    | 44033-1223  | 2        |
| HOLDER-FORK UNDER (Ref # 44037)              | 44037-1344  | 1        |
| HOLDER-FORK UPPER (Ref # 44039)              | 44039-1260  | 1        |
| GASKET,FORK CYLINDER BOLT (Ref # 44045)      | 44045-051   | 2        |
| BUSHING-FRONT FORK (Ref # 44065)             | 44065-1079  | 2        |
| BUSHING-FRONT FORK,INNER PIPE (Ref # 44065A) | 44065-1087  | 2        |
| DAMPER-ASSY,FORK (Ref # 44070)               | 44070-1511  | 1        |
| SCREW,5X16,BLACK (Ref # 92009)               | 92009-1654  | 2        |
| NUT,CAP,6MM (Ref # 92015)                    | 92015-1385  | 2        |
| NUT,WELL,5MM (Ref # 92015A)                  | 92015-1757  | 2        |
| SPACER,FORK OUTER (Ref # 92026)              | 92026-1276  | 2        |
| COLLAR,L=16.1 (Ref # 92027)                  | 92027-1847  | 2        |
| RING-SNAP,FORK OUTER (Ref # 92033)           | 92033-1222  | 2        |
| RING-SNAP,SPRING SEAT (Ref # 92033A)         | 92033-1223  | 2        |
| SEAL-OIL,FORK (Ref # 92049)                  | 92049-1363  | 2        |
| RING-O,SPRING SEAT (Ref # 92055)             | 92055-1363  | 2        |

# 1996 Vulcan 800 Classic PARTS LIST

## Front Fork

| ITEM NAME                        | PART NUMBER | QUANTITY |
|----------------------------------|-------------|----------|
| DAMPER (Ref # 92075)             | 92075-1035  | 2        |
| SEAL,FORK (Ref # 92093)          | 92093-1268  | 2        |
| BOLT,SOCKET,10X40 (Ref # 92150)  | 92150-1029  | 1        |
| BOLT,SOCKET,8X30 (Ref # 92150A)  | 92150-1031  | 2        |
| BOLT,SOCKET,8X18 (Ref # 92150B)  | 92150-1432  | 2        |
| BOLT,SOCKET,6X14 (Ref # 92151)   | 92151-1068  | 4        |
| BOLT,SOCKET,10X25 (Ref # 92151A) | 92151-1083  | 2        |
| BOLT,SOCKET,5X10 (Ref # 92151B)  | 92151-1097  | 2        |
| DAMPER (Ref # 92160)             | 92160-1555  | 2        |
| CLAMP (Ref # 92170)              | 92170-1546  | 1        |
| CLAMP,CABLE (Ref # 92170A)       | 92170-1658  | 1        |
| BOLT-FLANGED-SMALL (Ref # 132)   | 132E0630    | 2        |