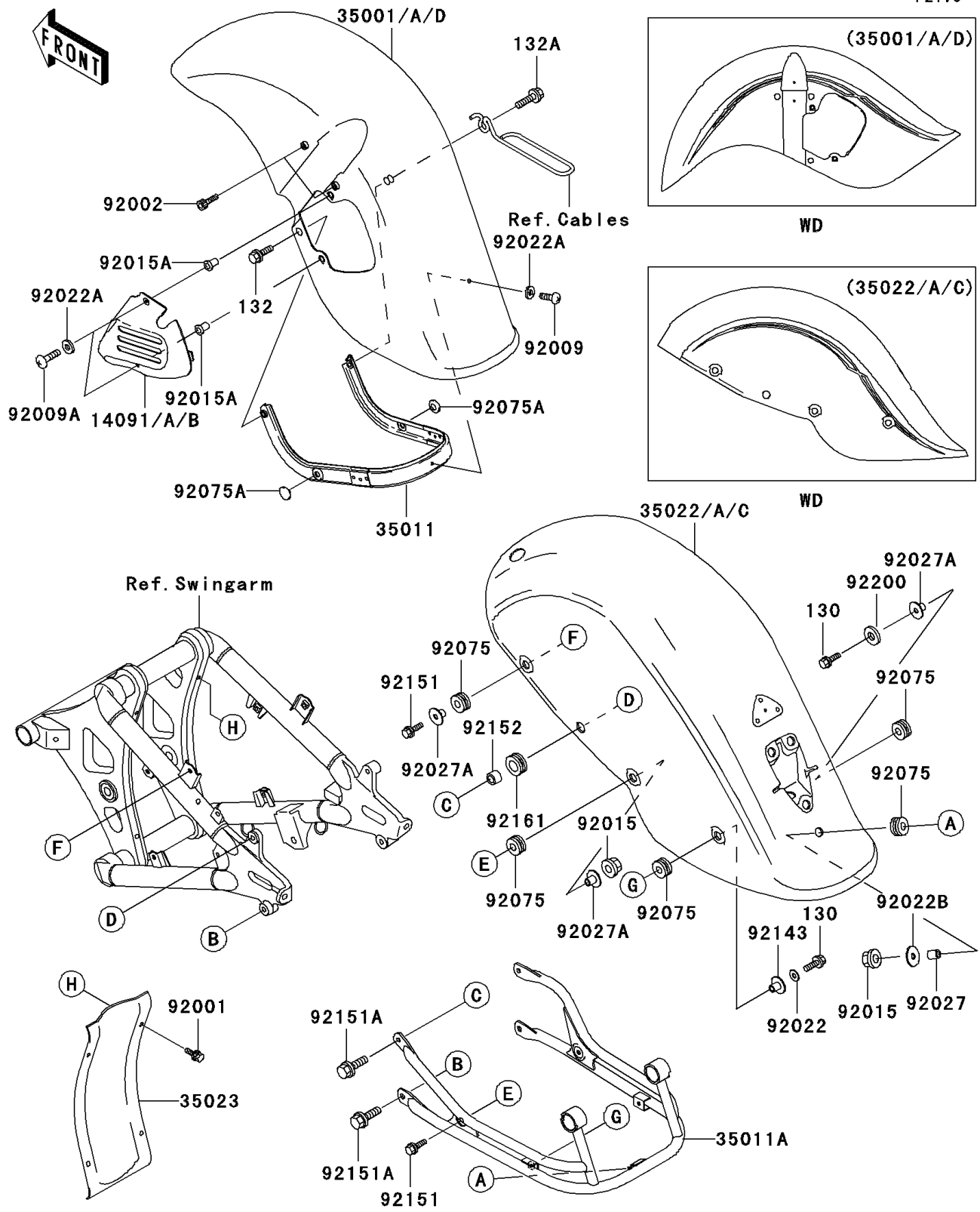


# 2000 Vulcan 800 Drifter PARTS DIAGRAM

Fenders

F2170



## 2000 Vulcan 800 Drifter PARTS LIST

### Fenders

ITEM NAME	PART NUMBER	QUANTITY
BOLT-FLANGED,6X25 (Ref # 130)	130J0625	2
BOLT-FLANGED-SMALL (Ref # 132)	132E0820	1
BOLT-FLANGED-SMALL (Ref # 132A)	132E0825	1
COVER,FRONT CALIPER,S.BLUE (Ref # 14091A)	14091-1059-Q5	1
COVER,FRONT CALIPER,P.B.BEIGE (Ref # 14091B)	14091-1059-X8	1
FENDER-ASSY-FRONT,P.B.BEIGE (Ref # 35001A)	35001-5045-X8	1
FENDER-ASSY-FRONT,S.BLUE (Ref # 35001D)	35001-5048-Q5	1
STAY,FRONT FENDER (Ref # 35011)	35011-1962	1
STAY,REAR FENDER (Ref # 35011A)	35011-1971	1
FENDER-COMP-REAR,P.B.BEIGE (Ref # 35022A)	35022-5057-X8	1
FENDER-COMP-REAR,S.BLUE (Ref # 35022C)	35022-5060-Q5	1
FENDER-REAR (Ref # 35023)	35023-1417	1
BOLT,6X20 (Ref # 92001)	92001-1765	4
BOLT,SOCKET,8X30 (Ref # 92002)	92002-1179	4
SCREW,5X12 (Ref # 92009)	92009-1652	1
SCREW,5X16,BLACK (Ref # 92009A)	92009-1654	2
NUT,FLANGED,6MM (Ref # 92015)	92015-1386	3
NUT,WELL,5MM (Ref # 92015A)	92015-1757	2
WASHER,6.5X16X1.0 (Ref # 92022)	92022-1093	1
WASHER,NYLON,5.3X11.5X1.5 (Ref # 92022A)	92022-1521	3
WASHER,7X24X1.6 (Ref # 92022B)	92022-228	1
COLLAR,6.3X10X12 (Ref # 92027)	92027-1143	1
COLLAR,L=13.1,BLACK (Ref # 92027A)	92027-1450	5
DAMPER (Ref # 92075)	92075-1690	7
DAMPER,RUBBER (Ref # 92075A)	92075-261	2
COLLAR (Ref # 92143)	92143-1960	1
BOLT,FLANGED,6X25 (Ref # 92151)	92151-1488	4
BOLT,FLANGED,10X34 (Ref # 92151A)	92151-1509	4
COLLAR,11X18X11.5 (Ref # 92152)	92152-1165	2

## 2000 Vulcan 800 Drifter PARTS LIST

### Fenders

ITEM NAME	PART NUMBER	QUANTITY
DAMPER (Ref # 92161)	92161-1051	2
WASHER,6.5X13X4 (Ref # 92200)	92200-1380	1