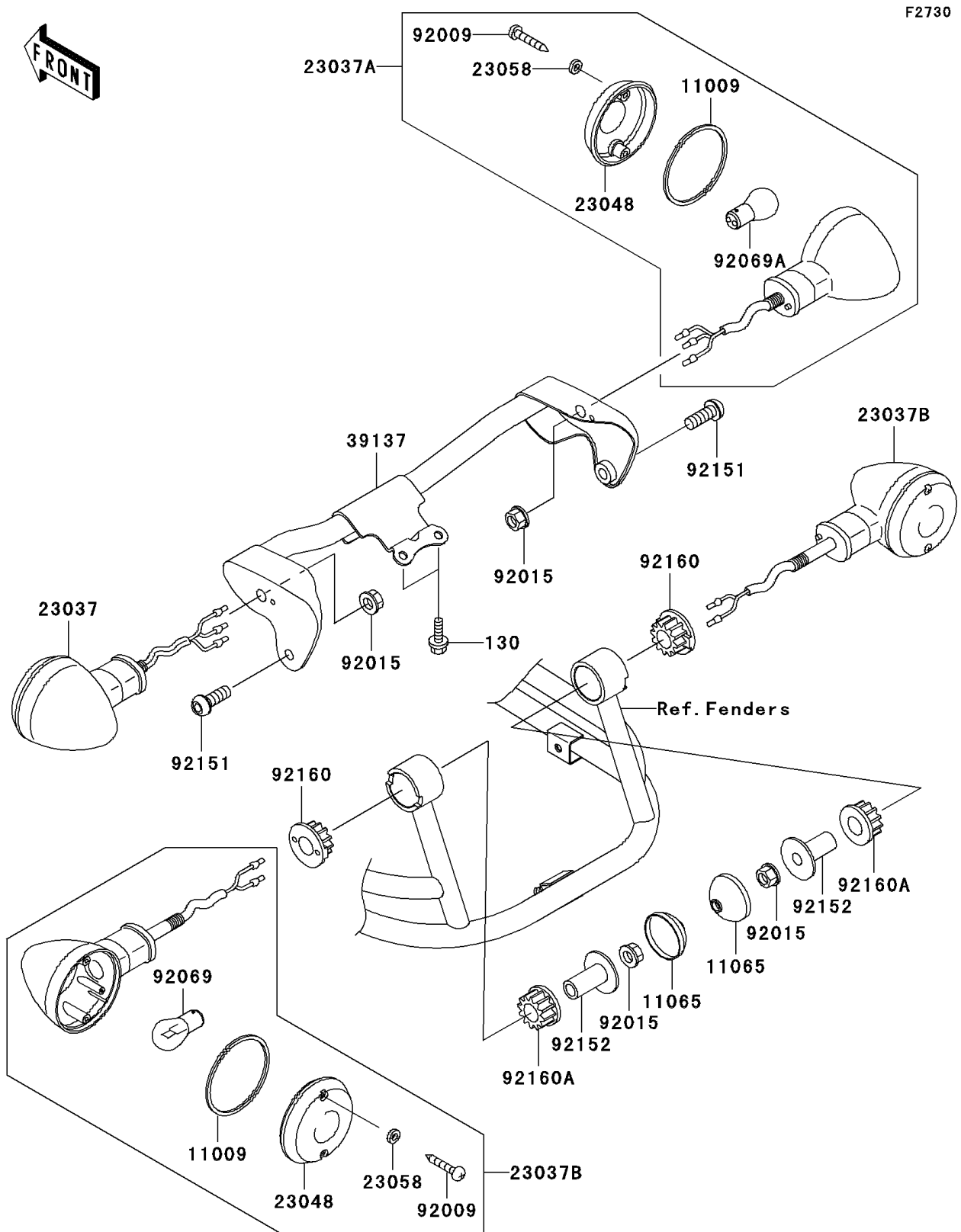


1999 Vulcan 800 Drifter (Canada Only) PARTS DIAGRAM

Turn Signals



1999 Vulcan 800 Drifter (Canada Only) PARTS LIST

Turn Signals

ITEM NAME	PART NUMBER	QUANTITY
BOLT-FLANGED (Ref # 130)	130J0612	2
GASKET,SIGNAL LAMP (Ref # 11009)	11009-1413	4
CAP,REAR SIGNAL LAMP (Ref # 11065)	11065-1115	2
LAMP-ASSY-SIGNAL,FR,LH (Ref # 23037)	23037-1357	1
LAMP-ASSY-SIGNAL,FR,RH (Ref # 23037A)	23037-1358	1
LAMP-ASSY-SIGNAL,RR (Ref # 23037B)	23037-1359	2
LENS-SIGNAL LAMP (Ref # 23048)	23048-1066	4
WASHER,PLAIN,4MM (Ref # 23058)	23058-002	8
STAY-COMP,SIGNAL LAMP,FR (Ref # 39137)	39137-1072	1
SCREW,TAPPING,4X25 (Ref # 92009)	92009-1637	8
NUT,FLANGED,10MM (Ref # 92015)	92015-1428	4
BULB,12V 32CP(23W) (Ref # 92069)	92069-055	2
BULB,12V 32/3CP(23/8W) (Ref # 92069A)	92069-060	2
BOLT,SOCKET,8X25 (Ref # 92151)	92151-1327	2
COLLAR,REAR SIGNAL LAMP (Ref # 92152)	92152-1202	2
DAMPER (Ref # 92160)	92160-1966	2
DAMPER (Ref # 92160A)	92160-1967	2