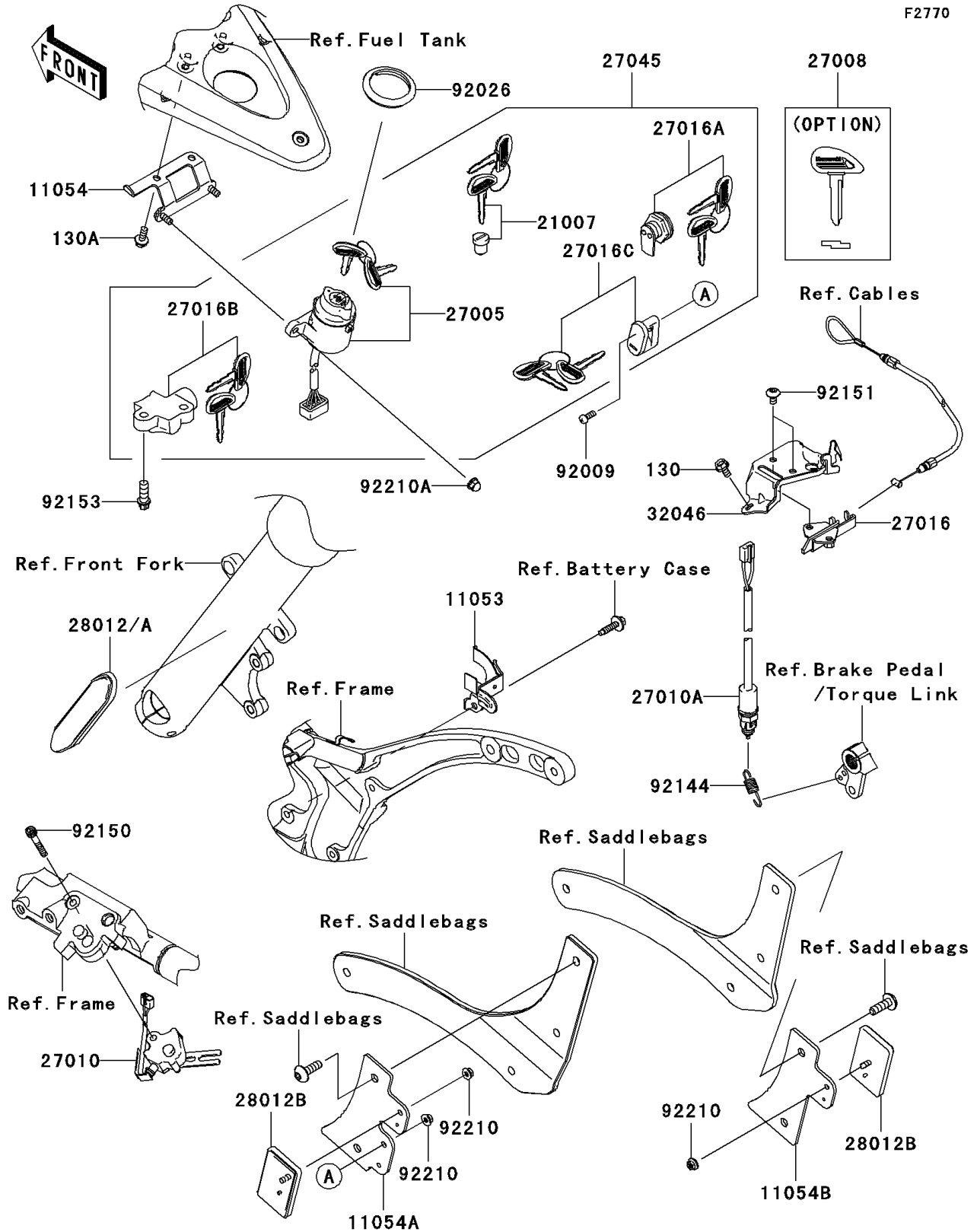


2009 Vulcan® 2000 Classic LT PARTS DIAGRAM

Ignition Switch/Locks/Reflectors

F2770



2009 Vulcan® 2000 Classic LT PARTS LIST

Ignition Switch/Locks/Reflectors

ITEM NAME	PART NUMBER	QUANTITY
BOLT-FLANGED,6X12 (Ref # 130)	130BB0612	2
BOLT-FLANGED,6X14 (Ref # 130A)	130BB0614	2
BRACKET,SIDE COVER LOCK (Ref # 11053)	11053-0920	1
BRACKET,IGNITION SWITCH (Ref # 11054)	11054-0095	1
BRACKET,REFLECTOR,RR,LH (Ref # 11054A)	11054-0357	1
BRACKET,REFLECTOR,RR,RH (Ref # 11054B)	11054-0358	1
ROTOR,LOCK,TANK CAP (Ref # 21007)	21007-5053	1
SWITCH-ASSY-IGNITION (Ref # 27005)	27005-0027	1
KEY-LOCK,BLANK (Ref # 27008)	27008-1211	1
SWITCH,SIDE STAND (Ref # 27010)	27010-0011	1
SWITCH,REAR BRAKE (Ref # 27010A)	27010-0023	1
LOCK-ASSY,SEAT STRIKER (Ref # 27016)	27016-1115	1
LOCK-ASSY,LID (Ref # 27016A)	27016-5279	1
LOCK-ASSY,STEERING (Ref # 27016B)	27016-5298	1
LOCK-ASSY,HELMET (Ref # 27016C)	27016-5311	1
SWITCH-ASSY (Ref # 27045)	27045-5324	1
REFLECTOR-REFLEX,FR,SIDE (Ref # 28012A)	28012-0019	2
REFLECTOR-REFLEX (Ref # 28012B)	28012-1088	2
BRACKET-SEAT (Ref # 32046)	32046-0037	1
SCREW,5X14 (Ref # 92009)	92009-1341	1
SPACER,IGNITION SWITCH (Ref # 92026)	92026-0018	1
SPRING,REAR BRAKE SWITCH (Ref # 92144)	92144-1141	1
BOLT,SOCKET,6X40 (Ref # 92150)	92150-1958	1
BOLT,SOCKET,6X12 (Ref # 92151)	92151-1219	2
BOLT,TORX,8X22 (Ref # 92153)	92153-1273	2
NUT,FLANGED,5MM (Ref # 92210)	92210-0007	3
NUT,CAP,6MM (Ref # 92210A)	92210-1252	2