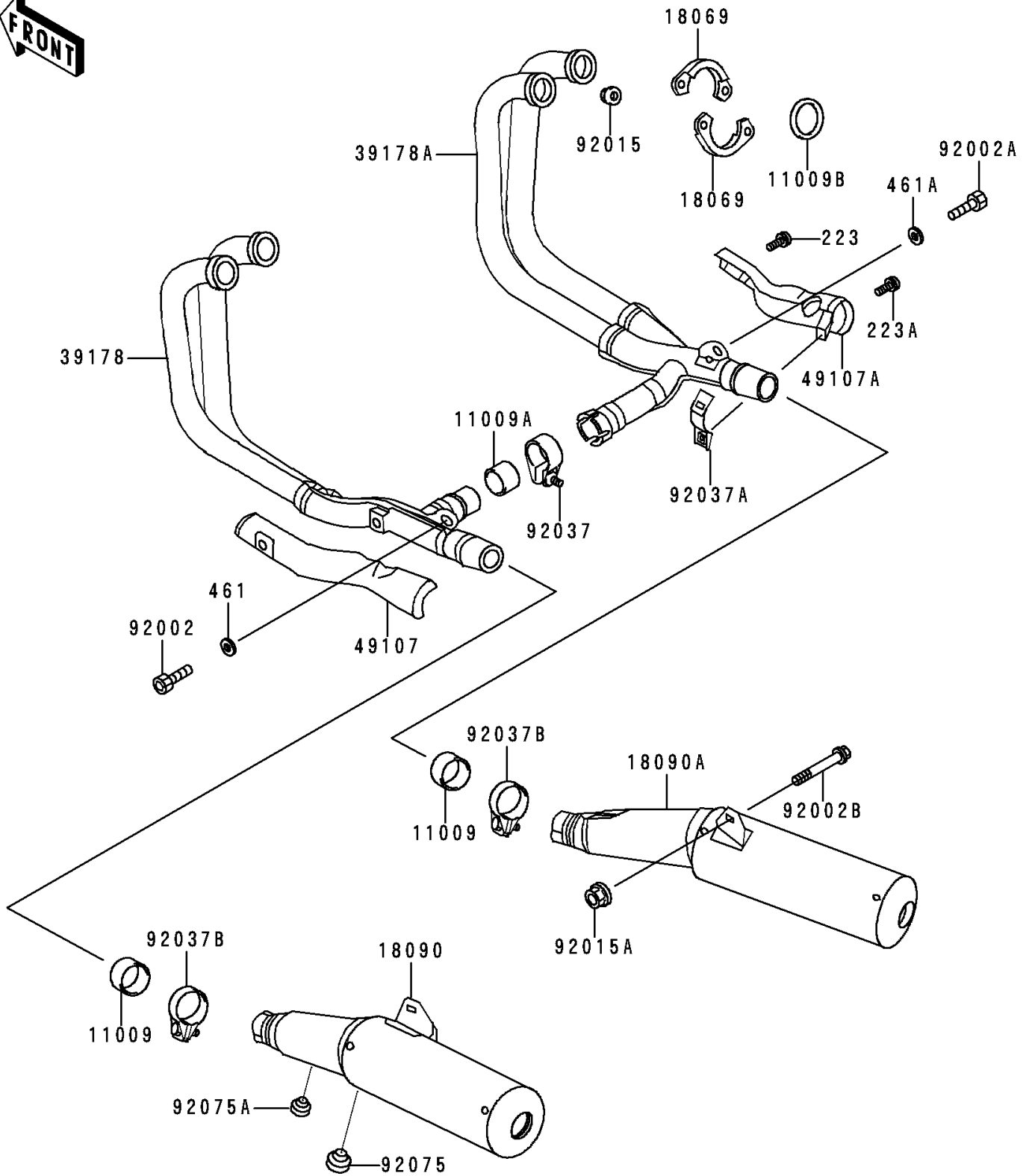


# 1996 Concours (Canada Only) PARTS DIAGRAM

Muffler(s)

E1140



# 1996 Concours (Canada Only) PARTS LIST

## Muffler(s)

| ITEM NAME                                    | PART NUMBER | QUANTITY |
|--|-------------|----------|
| SCREW-PAN-WS-CROS (Ref # 223)                | 223C0612    | 2        |
| SCREW-PAN-WS-CROS (Ref # 223A)               | 223C0620    | 2        |
| WASHER-SPRING,8MM (Ref # 461)                | 461F0800    | 1        |
| WASHER-SPRING,10MM,BLACK (Ref # 461A)        | 461K1000    | 1        |
| GASKET,EXHAUST PIPE CONNECTING (Ref # 11009) | 11009-1666  | 2        |
| GASKET,EXHAUST MANUFOLD (Ref # 11009A)       | 11009-1668  | 1        |
| GASKET,EXHAUST PIPE HOLDER (Ref # 11009B)    | 11009-1840  | 4        |
| HOLDER-EXHAUST PIPE (Ref # 18069)            | 18069-1122  | 8        |
| BODY-COMP-MUFFLER,LH (Ref # 18090)           | 18090-1354  | 1        |
| BODY-COMP-MUFFLER,RH (Ref # 18090A)          | 18090-1355  | 1        |
| MANIFOLD-COMP-EXHAUST,LH (Ref # 39178)       | 39178-1105  | 1        |
| MANIFOLD-COMP-EXHAUST,RH (Ref # 39178A)      | 39178-1106  | 1        |
| COVER-EXHAUST PIPE,LH (Ref # 49107)          | 49107-1053  | 1        |
| COVER-EXHAUST PIPE,RH (Ref # 49107A)         | 49107-1058  | 1        |
| BOLT,SOCKET,8X20 (Ref # 92002)               | 92002-1477  | 1        |
| BOLT,SOCKET,10X25 (Ref # 92002A)             | 92002-1683  | 1        |
| BOLT,10X30 (Ref # 92002B)                    | 92002-1817  | 2        |
| NUT,LOCK,8MM (Ref # 92015)                   | 92015-1380  | 8        |
| NUT,FLANGED,10MM (Ref # 92015A)              | 92015-1387  | 2        |
| CLAMP,MUFFLER,BLACK (Ref # 92037)            | 92037-1270  | 1        |
| CLAMP,EXHAUST PIPE COVER (Ref # 92037A)      | 92037-1506  | 2        |
| CLAMP,POWER CHAMBER (Ref # 92037B)           | 92037-1537  | 2        |
| DAMPER,STAND,CNT (Ref # 92075)               | 92075-1002  | 1        |
| DAMPER (Ref # 92075A)                        | 92075-281   | 1        |