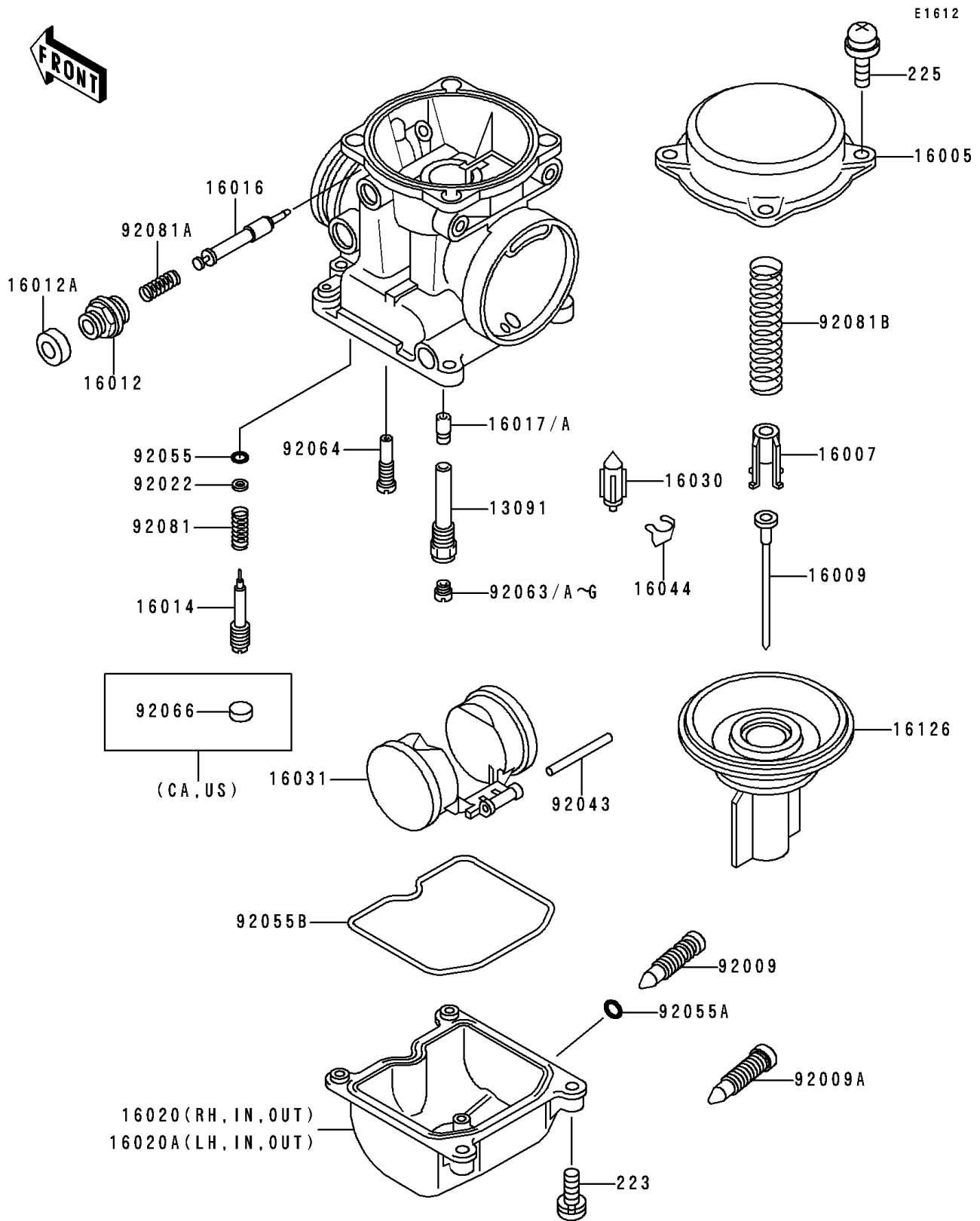


1996 Concours (Canada Only) PARTS DIAGRAM

Carburetor Parts



1996 Concours (Canada Only) PARTS LIST

Carburetor Parts

| ITEM NAME | PART NUMBER | QUANTITY |
|--|-------------|----------|
| HOLDER,NEEDLE JET (Ref # 13091) | 13091-1259 | 4 |
| TOP-CHAMBER,MIXING (Ref # 16005) | 16005-1056 | 4 |
| SEAT-SPRING,THROTTLE VALVE (Ref # 16007) | 16007-1120 | 4 |
| NEEDLE-JET,N52M (Ref # 16009) | 16009-1326 | 4 |
| CAP-STARTER PLUNGER (Ref # 16012) | 16012-1051 | 4 |
| CAP-STARTER PLUNGER (Ref # 16012A) | 16012-1052 | 4 |
| SCREW-PILOT AIR (Ref # 16014) | 16014-1054 | 4 |
| PLUNGER,STARTER (Ref # 16016) | 16016-1061 | 4 |
| JET-NEEDLE (Ref # 16017) | 16017-1313 | 4 |
| VALVE-FLOAT (Ref # 16030) | 16030-1007 | 4 |
| FLOAT (Ref # 16031) | 16031-1056 | 4 |
| CLAMP,FLOAT VALVE (Ref # 16044) | 16044-007 | 4 |
| VALVE,VACUUM (Ref # 16126) | 16126-1160 | 4 |
| SCREW,DRAIN,M6X1.0 (Ref # 92009) | 92009-1487 | 4 |
| SCREW,DRAIN,M6X0.75 (Ref # 92009A) | 92009-1551 | 4 |
| WASHER,PLAIN (Ref # 92022) | 92022-1003 | 4 |
| PIN,FLOAT (Ref # 92043) | 92043-1207 | 4 |
| RING-O,PILOT ADJUST (Ref # 92055) | 92055-1002 | 4 |
| RING-O,DRAIN SCREW (Ref # 92055A) | 92055-1053 | 4 |
| RING-O,FLOAT CHAMBER (Ref # 92055B) | 92055-1222 | 4 |
| JET-MAIN,#125 (Ref # 92063A) | 92063-1069 | 4 |
| JET-MAIN,#120 (Ref # 92063B) | 92063-1072 | 4 |
| JET-MAIN,#122 (Ref # 92063C) | 92063-1073 | 4 |
| JET-MAIN,#128 (Ref # 92063D) | 92063-1074 | 4 |
| JET-MAIN,#130 (Ref # 92063F) | 92063-1075 | 4 |
| SCREW-PAN-WS-CROS (Ref # 223) | 223C0416 | 16 |
| SCREW-PAN-WSP-CROS (Ref # 225) | 225C0418 | 15 |
| JET-PILOT,#35 (Ref # 92064) | 92064-1101 | 4 |
| SPRING,PILOT ADJUST SCREW (Ref # 92081) | 92081-1002 | 4 |

1996 Concours (Canada Only) PARTS LIST

Carburetor Parts

| ITEM NAME | PART NUMBER | QUANTITY |
|---------------------------------------|-------------|----------|
| SPRING,STARTER PLUNGER (Ref # 92081A) | 92081-1761 | 4 |
| SPRING,VACUUM VALVE (Ref # 92081B) | 92081-1925 | 4 |
| CHAMBER-FLOAT,RH,SIDE (Ref # 16020) | 16020-1054 | 2 |
| CHAMBER-FLOAT,LH,SIDE (Ref # 16020A) | 16020-1055 | 2 |