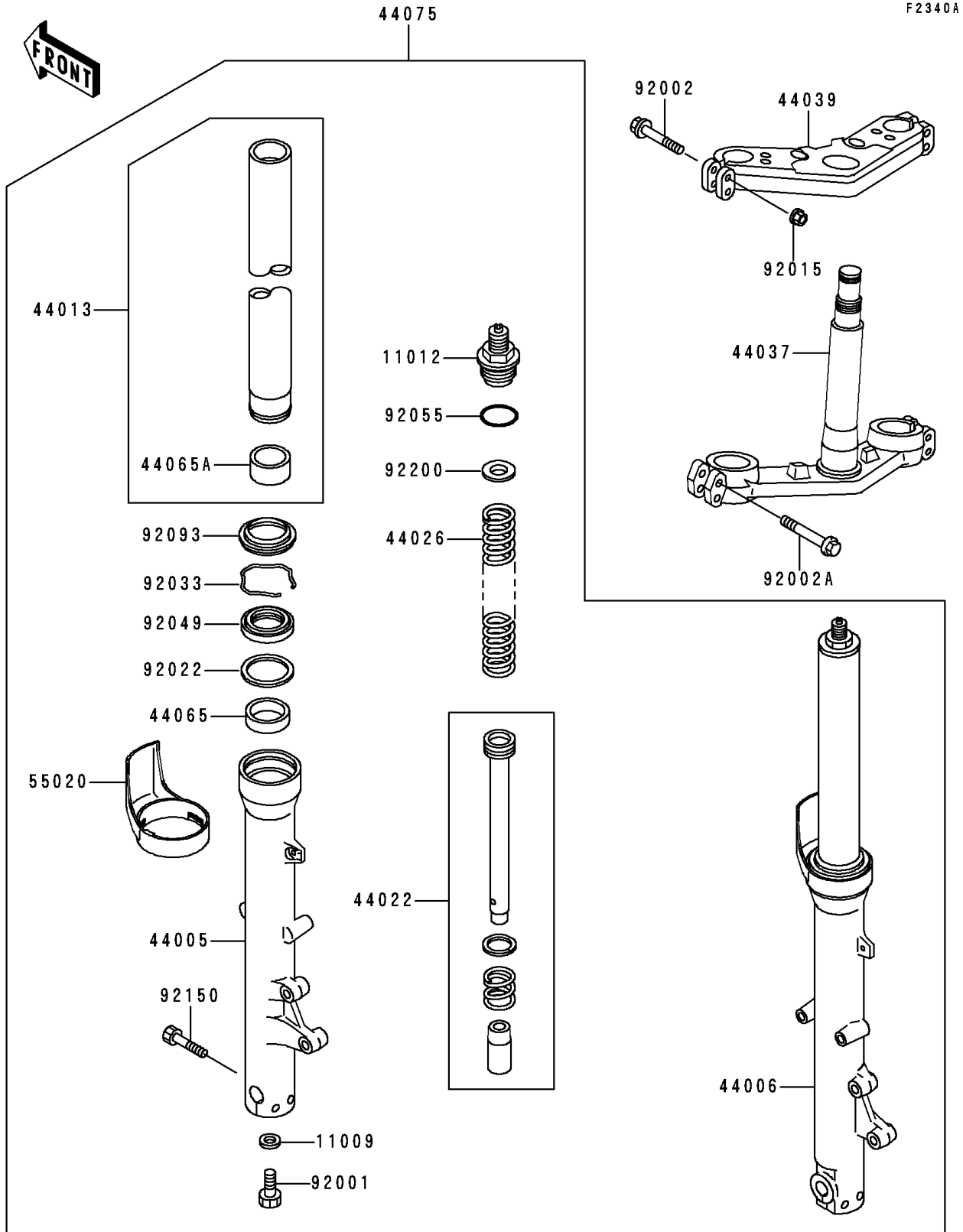


1999 Concours PARTS DIAGRAM

Front Fork(ZG1000-A14)



1999 Concours PARTS LIST

Front Fork(ZG1000-A14)

ITEM NAME	PART NUMBER	QUANTITY
GASKET,FORK CYLINDER BOLT (Ref # 11009)	11009-1127	2
CAP (Ref # 11012)	11012-1885	2
PIPE-LEFT FORK OUTER,BLACK (Ref # 44005)	44005-1395-10	1
PIPE-RIGHT FORK OUTER,BLACK (Ref # 44006)	44006-1394-10	1
PIPE-FORK INNER (Ref # 44013)	44013-1458	2
CYLINDER-FORK (Ref # 44022)	44022-1297	2
SPRING-FRONT FORK (Ref # 44026)	44026-1560	2
HOLDER-FORK UNDER (Ref # 44037)	44037-1387	1
HOLDER-FORK UPPER (Ref # 44039)	44039-1248	1
BUSHING-FRONT FORK,INNER PIPE (Ref # 44065)	44065-1114	2
BUSHING-FRONT FORK,OUTER TUBE (Ref # 44065A)	44065-1115	2
DAMPER-SET-FORK,BLACK (Ref # 44075)	44075-1086-10	1
GUARD,FORK (Ref # 55020)	55020-1645	2
BOLT,FORK CYLINDER (Ref # 92001)	92001-1309	2
BOLT,FLANGED,8X55 (Ref # 92002)	92002-1158	4
BOLT,FLANGED (Ref # 92002A)	92002-1476	4
NUT,FLANGED,8MM (Ref # 92015)	92015-1408	4
WASHER,FORK OUTER TUBE (Ref # 92022)	92022-1298	2
RING-SNAP (Ref # 92033)	92033-1036	2
SEAL-OIL,FORK OUTER TUBE (Ref # 92049)	92049-1494	2
RING-O,FORK TOP CAP (Ref # 92055)	92055-1050	2
SEAL,FORK OUTER TUBE (Ref # 92093)	92093-1472	2
BOLT,SOCKET,10X40 (Ref # 92150)	92150-1468	2
WASHER,FORK (Ref # 92200)	92200-1210	2