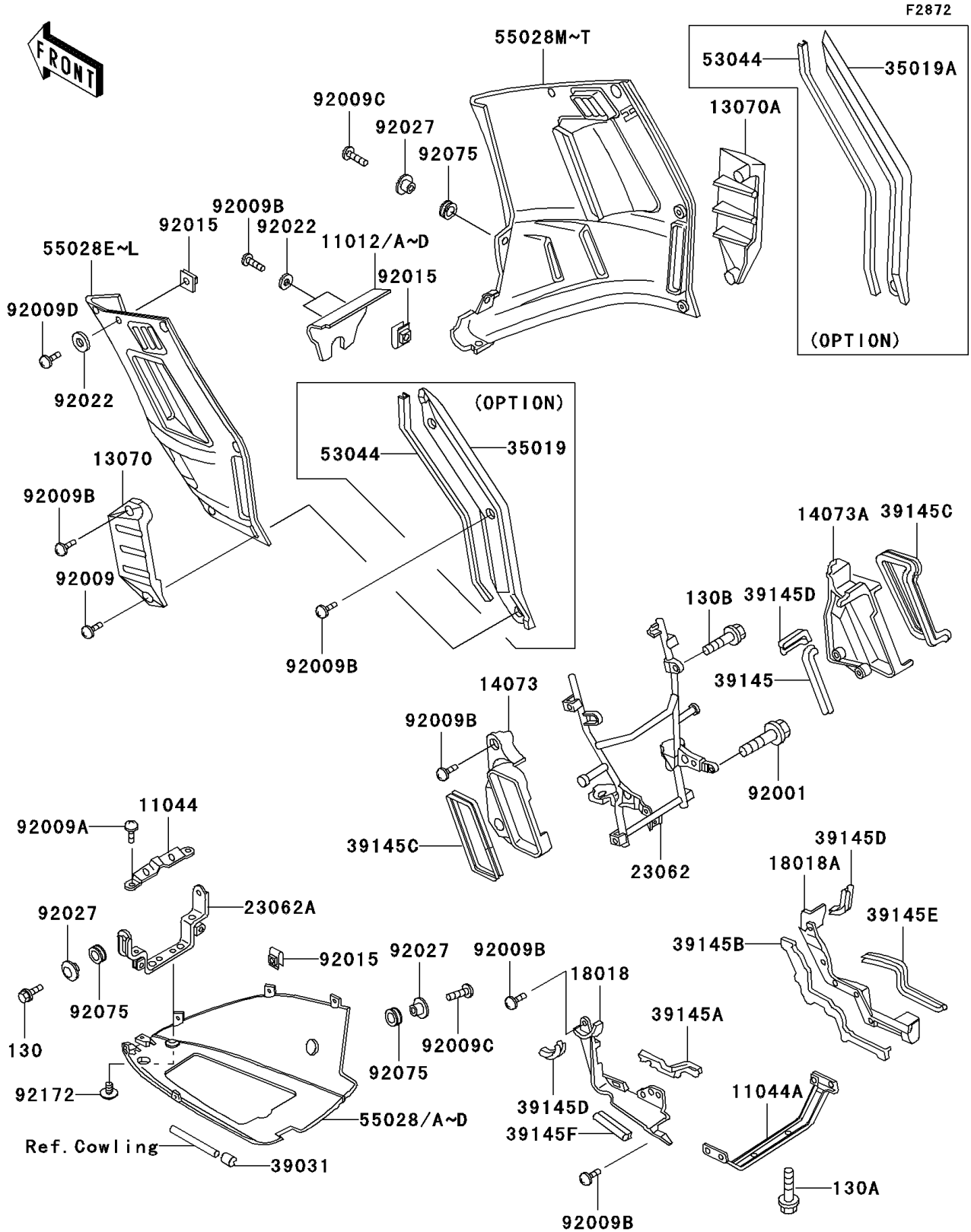


2000 Concours PARTS DIAGRAM

Cowling Lower



2000 Concours PARTS LIST

Cowling Lowers

ITEM NAME	PART NUMBER	QUANTITY
BRACKET,RESERVOIR TANK,UPP (Ref # 11044)	11044-1919	1
BRACKET,LOWER COWLING,RR (Ref # 11044A)	11044-1920	1
GUIDE,SIDE COWLING,LH (Ref # 13070)	13070-1171	1
GUIDE,SIDE COWLING,RH (Ref # 13070A)	13070-1172	1
DUCT,RADIATOR,RR,LH (Ref # 14073)	14073-1276	1
DUCT,RADIATOR,RR,RH (Ref # 14073A)	14073-1284	1
PLATE-HEAT GUARD,SIDE,LH (Ref # 18018)	18018-1068	1
PLATE-HEAT GUARD,SIDE,RH (Ref # 18018A)	18018-1069	1
BRACKET-COMP,RADIATOR (Ref # 23062)	23062-1064	1
BRACKET-COMP,LOWER COWLING,FR (Ref # 23062A)	23062-1065	1
FLAP,SIDE COWLING,LH (Ref # 35019)	35019-1193	1
FLAP,SIDE COWLING,RH (Ref # 35019A)	35019-1194	1
CAP-END,TRIM (Ref # 39031)	39031-1055	2
TRIM-SEAL,SIDE COWLING (Ref # 39145)	39145-1056	1
TRIM-SEAL,HEAT GUARD PLATE,LH (Ref # 39145A)	39145-1076	1
TRIM-SEAL,HEAT GUARD PLATE,RH (Ref # 39145B)	39145-1077	1
TRIM-SEAL,DUCT (Ref # 39145C)	39145-1078	2
TRIM-SEAL,HEAT GUARD (Ref # 39145D)	39145-1079	3
TRIM-SEAL,HEAT GUARD,RH (Ref # 39145E)	39145-1080	1
TRIM-SEAL,HEAT GUARD,LH (Ref # 39145F)	39145-1084	1
TRIM,INNER COWLING (Ref # 53044)	53044-1184	2
BOLT,FLANGED,10X41,BLACK (Ref # 92001)	92001-1844	2
SCREW,6X28,BLACK (Ref # 92009)	92009-1400	2
SCREW,5X10 (Ref # 92009A)	92009-1651	2
SCREW,6X14 (Ref # 92009B)	92009-1662	16
SCREW,6X18 (Ref # 92009C)	92009-1663	4
SCREW,6X22 (Ref # 92009D)	92009-1664	10
NUT,6MM (Ref # 92015)	92015-1602	16
WASHER,6X16X1 (Ref # 92022)	92022-1818	12

2000 Concours PARTS LIST

Cowling Lowers

ITEM NAME	PART NUMBER	QUANTITY
COLLAR,L=9.1,BLACK (Ref # 92027)	92027-1935	6
DAMPER (Ref # 92075)	92075-1634	6
BOLT-FLANGED (Ref # 130)	130C0618	2
BOLT-FLANGED,6X10 (Ref # 130A)	130G0610	2
BOLT-FLANGED (Ref # 130B)	130J0812	2
SCREW,6X10 (Ref # 92172)	92172-0005	2
CAP,RESERVOIR INSPECTION,GRAY (Ref # 11012)	11012-1534-JR	1
CAP,RESERVOIR INSPECTION,GRAY (Ref # 11012A)	11012-1534-T2	1
COWLING,LWR,P.C.GRAY (Ref # 55028)	55028-1124-JR	1
COWLING,LWR,P.C.GRAY (Ref # 55028A)	55028-1124-T2	1
COWLING,SIDE,LH,RED/GRAY (Ref # 55028F)	55028-1154-FV	1
COWLING,SIDE,LH,RED/GRAY (Ref # 55028G)	55028-1154-JV	1
COWLING,SIDE,RH,RED/GRAY (Ref # 55028N)	55028-1155-FV	1
COWLING,SIDE,RH,RED/GRAY (Ref # 55028O)	55028-1155-JV	1