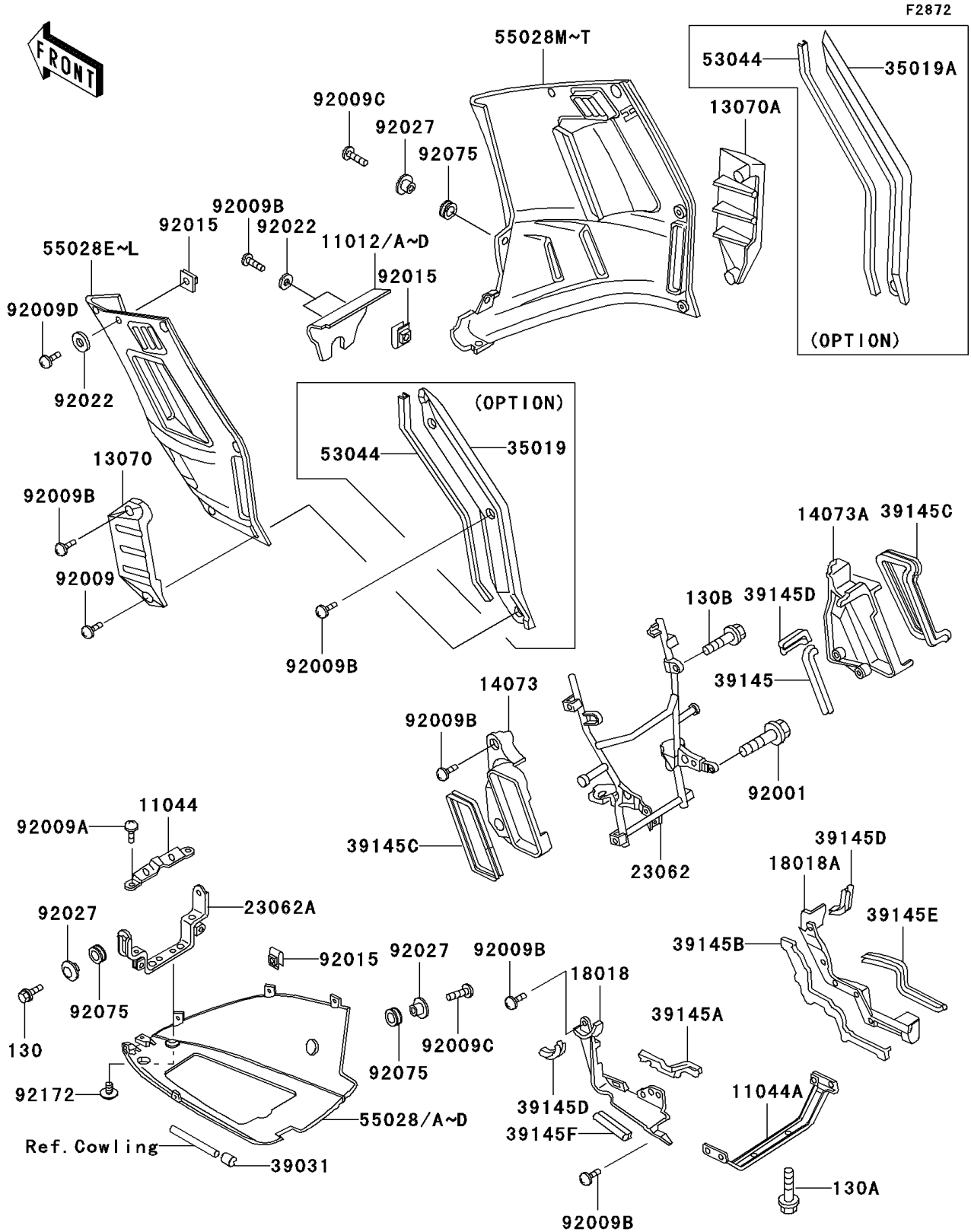


2001 Concours PARTS DIAGRAM

Cowling Lower



2001 Concours PARTS LIST

Cowling Lowers

| ITEM NAME | PART NUMBER | QUANTITY |
|--|-------------|----------|
| BRACKET,RESERVOIR TANK,UPP (Ref # 11044) | 11044-1919 | 1 |
| BRACKET,LOWER COWLING,RR (Ref # 11044A) | 11044-1920 | 1 |
| GUIDE,SIDE COWLING,LH (Ref # 13070) | 13070-1171 | 1 |
| GUIDE,SIDE COWLING,RH (Ref # 13070A) | 13070-1172 | 1 |
| DUCT,RADIATOR,RR,LH (Ref # 14073) | 14073-1276 | 1 |
| DUCT,RADIATOR,RR,RH (Ref # 14073A) | 14073-1284 | 1 |
| PLATE-HEAT GUARD,SIDE,LH (Ref # 18018) | 18018-1068 | 1 |
| PLATE-HEAT GUARD,SIDE,RH (Ref # 18018A) | 18018-1069 | 1 |
| BRACKET-COMP,RADIATOR (Ref # 23062) | 23062-1064 | 1 |
| BRACKET-COMP,LOWER COWLING,FR (Ref # 23062A) | 23062-1065 | 1 |
| FLAP,SIDE COWLING,LH (Ref # 35019) | 35019-1193 | 1 |
| FLAP,SIDE COWLING,RH (Ref # 35019A) | 35019-1194 | 1 |
| CAP-END,TRIM (Ref # 39031) | 39031-1055 | 2 |
| TRIM-SEAL,SIDE COWLING (Ref # 39145) | 39145-1056 | 1 |
| TRIM-SEAL,HEAT GUARD PLATE,LH (Ref # 39145A) | 39145-1076 | 1 |
| TRIM-SEAL,HEAT GUARD PLATE,RH (Ref # 39145B) | 39145-1077 | 1 |
| TRIM-SEAL,DUCT (Ref # 39145C) | 39145-1078 | 2 |
| TRIM-SEAL,HEAT GUARD (Ref # 39145D) | 39145-1079 | 3 |
| TRIM-SEAL,HEAT GUARD,RH (Ref # 39145E) | 39145-1080 | 1 |
| TRIM-SEAL,HEAT GUARD,LH (Ref # 39145F) | 39145-1084 | 1 |
| TRIM,INNER COWLING (Ref # 53044) | 53044-1184 | 2 |
| BOLT,FLANGED,10X41,BLACK (Ref # 92001) | 92001-1844 | 2 |
| SCREW,6X28,BLACK (Ref # 92009) | 92009-1400 | 2 |
| SCREW,5X10 (Ref # 92009A) | 92009-1651 | 2 |
| SCREW,6X14 (Ref # 92009B) | 92009-1662 | 16 |
| SCREW,6X18 (Ref # 92009C) | 92009-1663 | 4 |
| SCREW,6X22 (Ref # 92009D) | 92009-1664 | 10 |
| NUT,6MM (Ref # 92015) | 92015-1602 | 16 |
| WASHER,6X16X1 (Ref # 92022) | 92022-1818 | 12 |

2001 Concours PARTS LIST

Cowling Lowers

| ITEM NAME | PART NUMBER | QUANTITY |
|--|---------------|----------|
| COLLAR,L=9.1,BLACK (Ref # 92027) | 92027-1935 | 6 |
| DAMPER (Ref # 92075) | 92075-1634 | 6 |
| BOLT-FLANGED (Ref # 130) | 130C0618 | 2 |
| BOLT-FLANGED,6X10 (Ref # 130A) | 130G0610 | 2 |
| BOLT-FLANGED (Ref # 130B) | 130J0812 | 2 |
| SCREW,6X10 (Ref # 92172) | 92172-0005 | 2 |
| CAP,RESERVOIR INSPECTION,GRAY (Ref # 11012) | 11012-1534-JR | 1 |
| CAP,RESERVOIR INSPECTION,GRAY (Ref # 11012A) | 11012-1534-T2 | 1 |
| COWLING,LWR,P.C.GRAY (Ref # 55028) | 55028-1124-JR | 1 |
| COWLING,LWR,P.C.GRAY (Ref # 55028A) | 55028-1124-T2 | 1 |
| COWLING,SIDE,LH,RED/GRAY (Ref # 55028G) | 55028-1154-JV | 1 |
| COWLING,SIDE,LH,BLUE/GRAY (Ref # 55028H) | 55028-1154-NI | 1 |
| COWLING,SIDE,RH,RED/GRAY (Ref # 55028O) | 55028-1155-JV | 1 |
| COWLING,SIDE,RH,BLUE/GRAY (Ref # 55028P) | 55028-1155-NI | 1 |