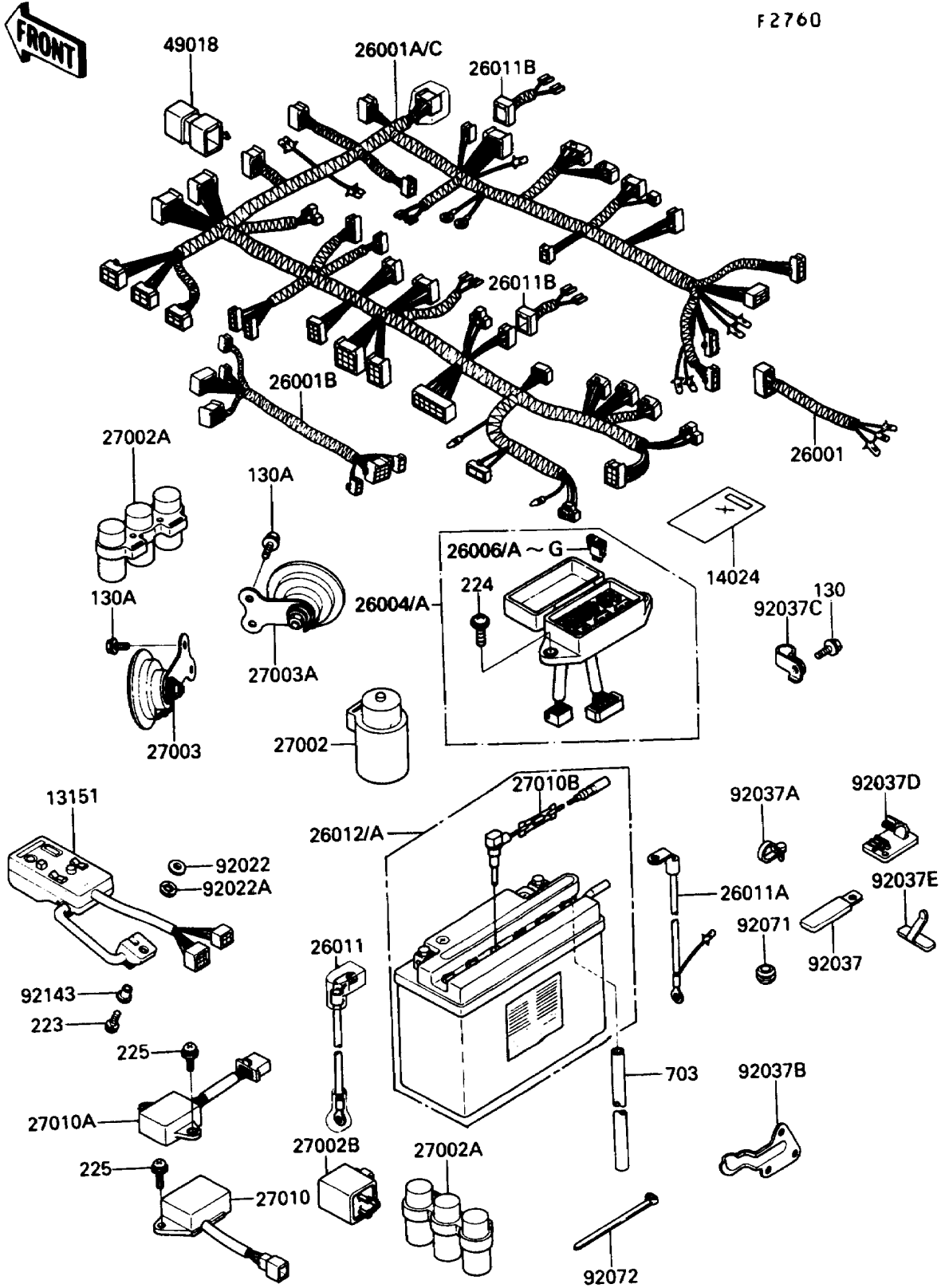


# 1987 Voyager XII PARTS DIAGRAM

Electrical Equipment



# 1987 Voyager XII PARTS LIST

## Electrical Equipment

| ITEM NAME                                   | PART NUMBER | QUANTITY |
|---|-------------|----------|
| SWITCH-COMP,AUDIO (Ref # 13151)             | 13151-1063  | 1        |
| COVER,HARNESS (Ref # 14024)                 | 14024-1352  | 1        |
| HARNESS,REAR FENDER (Ref # 26001)           | 26001-1760  | 1        |
| HARNESS,MAIN (Ref # 26001A)                 | 26001-1860  | 1        |
| HARNESS,RADIO (Ref # 26001B)                | 26001-1863  | 1        |
| FUSE-ASSY (Ref # 26004)                     | 26004-1065  | 1        |
| FUSE,30A-G (Ref # 26006)                    | 26006-1006  | 2        |
| FUSE,10A-R (Ref # 26006A)                   | 26006-1007  | 6        |
| FUSE,3A-P (Ref # 26006B)                    | 26006-1060  | 1        |
| FUSE,15A-B (Ref # 26006C)                   | 26006-1061  | 2        |
| WIRE-LEAD,BATTERY(+) (Ref # 26011)          | 26011-1339  | 1        |
| WIRE-LEAD,BATTERY(-) (Ref # 26011A)         | 26011-1340  | 1        |
| WIRE-LEAD,IGNITION COIL (Ref # 26011B)      | 26011-1365  | 2        |
| BATTERY,12V 20AH,SY50-N18L-A (Ref # 26012)  | 26012-1188  | 1        |
| RELAY-ASSY (Ref # 27002)                    | 27002-1051  | 1        |
| RELAY-ASSY (Ref # 27002A)                   | 27002-1052  | 2        |
| RELAY-ASSY,TURN SIGNAL (Ref # 27002B)       | 27002-1060  | 1        |
| HORN,350HZ,LH (Ref # 27003)                 | 27003-1239  | 1        |
| HORN,415HZ,RH (Ref # 27003A)                | 27003-1240  | 1        |
| SWITCH,RESERVE LIGHTING (Ref # 27010)       | 27010-1069  | 1        |
| SWITCH,TURN SIGNAL OPERATION (Ref # 27010A) | 27010-1166  | 1        |
| SWITCH,BATTERY,L=180 (Ref # 27010B)         | 27010-1256  | 1        |
| DIODE (Ref # 49018)                         | 49018-1052  | 2        |
| WASHER,6.5X20X1.6 (Ref # 92022)             | 92022-125   | 1        |
| WASHER,WAVE,10MM (Ref # 92022A)             | 92022-1828  | 1        |
| CLAMP,WIRING HARNESS (Ref # 92037)          | 92037-1069  | 6        |
| CLAMP,HOSE (Ref # 92037A)                   | 92037-1163  | 1        |
| CLAMP (Ref # 92037B)                        | 92037-1720  | 1        |
| CLAMP,HOSE (Ref # 92037C)                   | 92037-1727  | 1        |

# 1987 Voyager XII PARTS LIST

## Electrical Equipment

| ITEM NAME                      | PART NUMBER | QUANTITY |
|--------------------------------|-------------|----------|
| CLAMP,HARNESS (Ref # 92037D)   | 92037-1816  | 1        |
| CLAMP,HARNESS (Ref # 92037E)   | 92037-1820  | 3        |
| BOLT-FLANGED,6X10 (Ref # 130)  | 130B0610    | 2        |
| BOLT-FLANGED,6X12 (Ref # 130A) | 130C0612    | 4        |
| SCREW-PAN-WS-CROS (Ref # 223)  | 223C0620    | 1        |
| SCREW-PAN-WP-CROS (Ref # 224)  | 224B0614    | 2        |
| SCREW-PAN-WSP-CROS (Ref # 225) | 225B0620    | 4        |
| TUBE-RUBBER,8X750 (Ref # 703)  | 703A08750   | 1        |
| GROMMET (Ref # 92071)          | 92071-024   | 3        |
| BAND,L=185 (Ref # 92072)       | 92072-1195  | 12       |
| COLLAR (Ref # 92143)           | 92143-1026  | 1        |