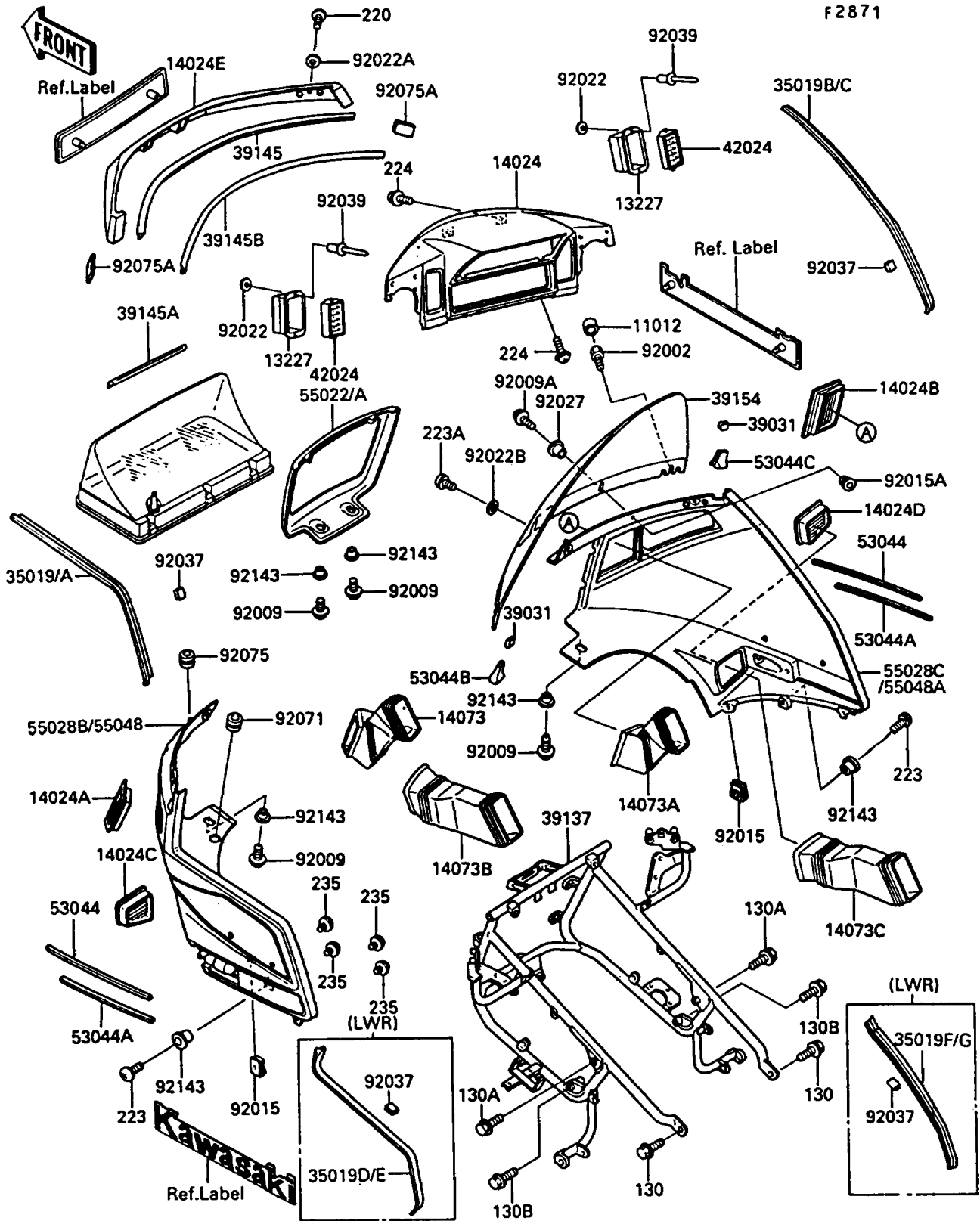


1987 Voyager XII PARTS DIAGRAM

Cowling



1987 Voyager XII PARTS LIST

Cowling

ITEM NAME	PART NUMBER	QUANTITY
CAP (Ref # 11012)	11012-1550	2
HOUSING,SHUTTER (Ref # 13227)	13227-1012	2
COVER,METER (Ref # 14024)	14024-1186	1
COVER,LOUVER,UPP,LH (Ref # 14024A)	14024-1192	1
COVER,LOUVER,UPP,RH (Ref # 14024B)	14024-1193	1
COVER,LOUVER,LWR,LH (Ref # 14024C)	14024-1194	1
COVER,LOUVER,LWR,RH (Ref # 14024D)	14024-1195	1
COVER,WINDSHIELD (Ref # 14024E)	14024-1280	1
DUCT,COWLING,UPP,LH (Ref # 14073)	14073-1245	1
DUCT,COWLING,UPP,RH (Ref # 14073A)	14073-1246	1
DUCT,COWLING,LWR,LH (Ref # 14073B)	14073-1247	1
DUCT,COWLING,LWR,RH (Ref # 14073C)	14073-1248	1
FLAP,UPP,LH,P.B.BEIGE (Ref # 35019A)	35019-1201-X8	1
FLAP,UPP,RH,P.B.BEIGE (Ref # 35019C)	35019-1202-X8	1
FLAP,LWR,LH,P.B.BEIGE (Ref # 35019E)	35019-1203-X8	1
FLAP,LWR,RH,P.B.BEIGE (Ref # 35019G)	35019-1204-X8	1
CAP-END,TRIM (Ref # 39031)	39031-1058	2
STAY-COMP,COWLING (Ref # 39137)	39137-1057	1
TRIM-SEAL,WINDSHIELD COVER (Ref # 39145)	39145-1072	1
TRIM-SEAL,METER COVER (Ref # 39145A)	39145-1081	1
TRIM-SEAL,METER COVER (Ref # 39145B)	39145-1082	1
WINDSHIELD (Ref # 39154)	39154-1101	1
SHUTTER,LOUVER (Ref # 42024)	42024-1002	2
TRIM,COWLING SIDE,UPP (Ref # 53044)	53044-1150	2
TRIM,COWLING SIDE,LWR (Ref # 53044A)	53044-1151	2
TRIM,WINDSHIELD,LH (Ref # 53044B)	53044-1181	1
TRIM,WINDSHIELD,RH (Ref # 53044C)	53044-1182	1
COVER-HEAD LAMP,P.B.BEIGE (Ref # 55022A)	55022-1054-X8	1
COWLING,UPP,LH,BEIGE/BEIGE (Ref # 55028B)	55028-5340-Y3	1

1987 Voyager XII PARTS LIST

Cowling

ITEM NAME	PART NUMBER	QUANTITY
COWLING,UPP,RH,BEIGE/BEIGE (Ref # 55028C)	55028-5341-Y3	1
BOLT,6X25 (Ref # 92002)	92002-1830	2
BOLT-FLANGED (Ref # 130)	130D0812	2
BOLT-FLANGED,8X35 (Ref # 130A)	130D0835	2
BOLT-FLANGED,8X50 (Ref # 130B)	130D0850	2
SCREW-PAN-CROS (Ref # 220)	220B0510	2
SCREW-PAN-WS-CROS (Ref # 223)	223C0616	2
SCREW-PAN-WS-CROS,6X25 (Ref # 223A)	223C0625	2
SCREW-PAN-WP-CROS (Ref # 224)	224C0510	4
SCREW-PAN-WP-CROS (Ref # 235)	235B0408	8
SCREW,6X14 (Ref # 92009)	92009-1288	4
SCREW,5X14 (Ref # 92009A)	92009-1427	2
NUT,5MM,COWLING (Ref # 92015)	92015-1343	2
NUT,5MM (Ref # 92015A)	92015-1710	4
WASHER,3.3X8X0.5 (Ref # 92022)	92022-1516	4
WASHER,5.3X10X0.8 (Ref # 92022A)	92022-1653	2
WASHER,6.5MM (Ref # 92022B)	92022-1808	2
COLLAR,L=11.1 (Ref # 92027)	92027-194	4
CLAMP,FLAP (Ref # 92037)	92037-1943	18
RIVET (Ref # 92039)	92039-1041	4
GROMMET,AIR FILTER (Ref # 92071)	92071-1042	1
DAMPER (Ref # 92075)	92075-1629	2
DAMPER (Ref # 92075A)	92075-1883	2
COLLAR,L=6.5 (Ref # 92143)	92143-1025	6