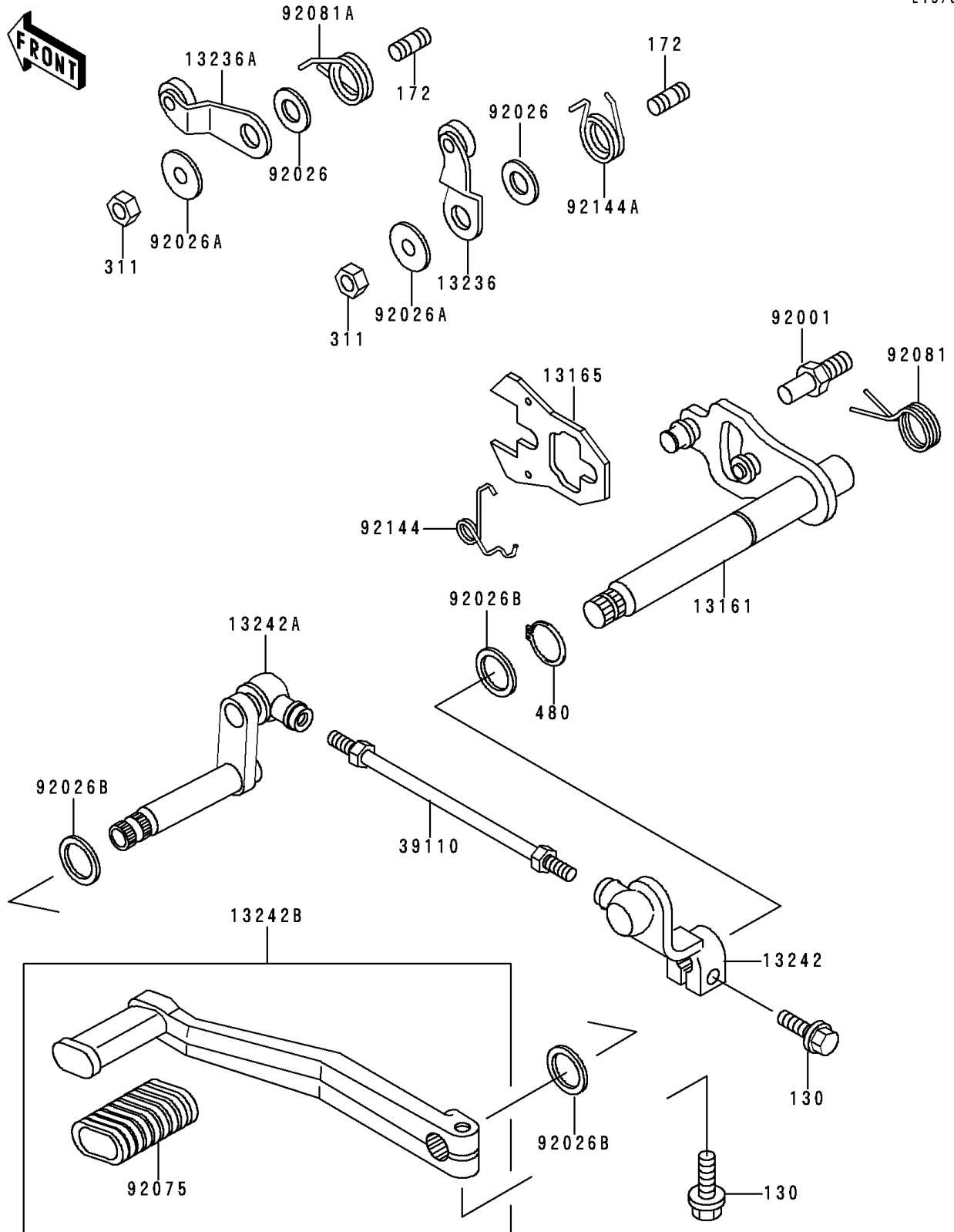


1998 Voyager XII PARTS DIAGRAM

Gear Change Mechanism

E1370



1998 Voyager XII PARTS LIST

Gear Change Mechanism

ITEM NAME	PART NUMBER	QUANTITY
BOLT-FLANGED,6X20 (Ref # 130)	130P0620	2
BOLT-STUD,6X12 (Ref # 172)	172G0612	2
NUT-HEX,6MM (Ref # 311)	311G0600	2
CIRCLIP-TYPE-C,13MM (Ref # 480)	480J1300	1
LEVER-COMP-CHANGE SHAFT (Ref # 13161)	13161-1146	1
PAWL (Ref # 13165)	13165-1120	1
LEVER-COMP,NEUTRAL POSITION (Ref # 13236)	13236-1143	1
LEVER-COMP,GEAR POSITION (Ref # 13236A)	13236-1144	1
LEVER-ASSY-CHANGE (Ref # 13242)	13242-1194	1
LEVER-ASSY-CHANGE,LINK (Ref # 13242A)	13242-1208	1
LEVER-ASSY-CHANGE,PEDAL (Ref # 13242B)	13242-1237	1
ROD-ASSY-TIE,L=90,BLACK (Ref # 39110)	39110-1008	1
BOLT,RETURN SPRING (Ref # 92001)	92001-1455	1
SPACER,6.3X12X1.0 (Ref # 92026)	92026-094	2
SPACER (Ref # 92026A)	92026-1217	2
SPACER,13.3X18X1.0 (Ref # 92026B)	92026-1532	3
DAMPER,CHANGE PEDAL (Ref # 92075)	92075-1585	1
SPRING,CHANGE PEDAL RETURN (Ref # 92081)	92081-1869	1
SPRING,GEAR LEVER (Ref # 92081A)	92081-1942	1
SPRING (Ref # 92144)	92144-1029	1
SPRING,NEUTRAL LEVER (Ref # 92144A)	92144-1762	1