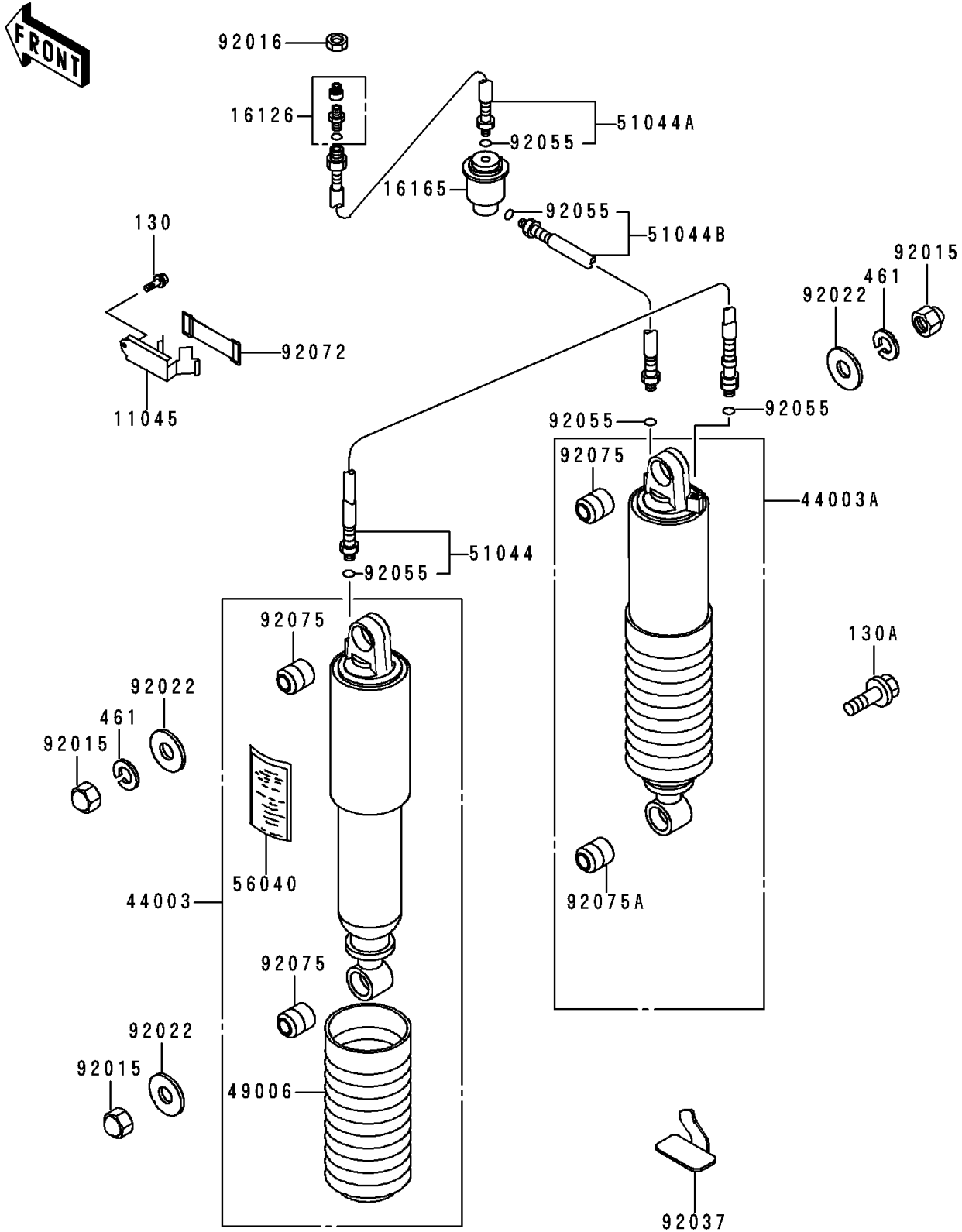


# 1996 Voyager XII PARTS DIAGRAM

Suspension/Shock Absorber

F2151



# 1996 Voyager XII PARTS LIST

## Suspension/Shock Absorber

| ITEM NAME                                   | PART NUMBER | QUANTITY |
|---------------------------------------------|-------------|----------|
| BOLT-FLANGED,6X10 (Ref # 130)               | 130B0610    | 1        |
| BOLT-FLANGED,10X35 (Ref # 130A)             | 130J1035    | 1        |
| WASHER-SPRING,10MM,BLACK (Ref # 461)        | 461K1000    | 2        |
| BRACKET,SEPARATOR (Ref # 11045)             | 11045-1245  | 1        |
| VALVE,AIR (Ref # 16126)                     | 16126-1029  | 1        |
| SEPARATOR (Ref # 16165)                     | 16165-1056  | 1        |
| DAMPER-ASSY,SHOCKABSORBER,LH (Ref # 44003)  | 44003-1682  | 1        |
| DAMPER-ASSY,SHOCKABSORBER,RH (Ref # 44003A) | 44003-1683  | 1        |
| BOOT,SHOCKABSORBER,BLACK (Ref # 49006)      | 49006-1092  | 2        |
| TUBE-ASSY,SHOCKABSORBER (Ref # 51044)       | 51044-1079  | 1        |
| TUBE-ASSY,SHOCKABSORBER (Ref # 51044A)      | 51044-1080  | 1        |
| TUBE-ASSY,SHOCKABSORBER (Ref # 51044B)      | 51044-1081  | 1        |
| LABEL-WARNING (Ref # 56040)                 | 56040-1030  | 1        |
| NUT,CAP,10MM,BLACK (Ref # 92015)            | 92015-1203  | 3        |
| NUT,14MM (Ref # 92016)                      | 92016-044   | 1        |
| WASHER,10.5X30X2.3,BLACK (Ref # 92022)      | 92022-1302  | 3        |
| CLAMP,HARNESS (Ref # 92037)                 | 92037-1820  | 3        |
| RING-O,FORK (Ref # 92055)                   | 92055-1100  | 5        |
| BAND,L=50 (Ref # 92072)                     | 92072-066   | 1        |
| DAMPER,SHOCKABSORBER (Ref # 92075)          | 92075-1141  | 3        |
| DAMPER,SHOCKABSORBER (Ref # 92075A)         | 92075-1586  | 1        |