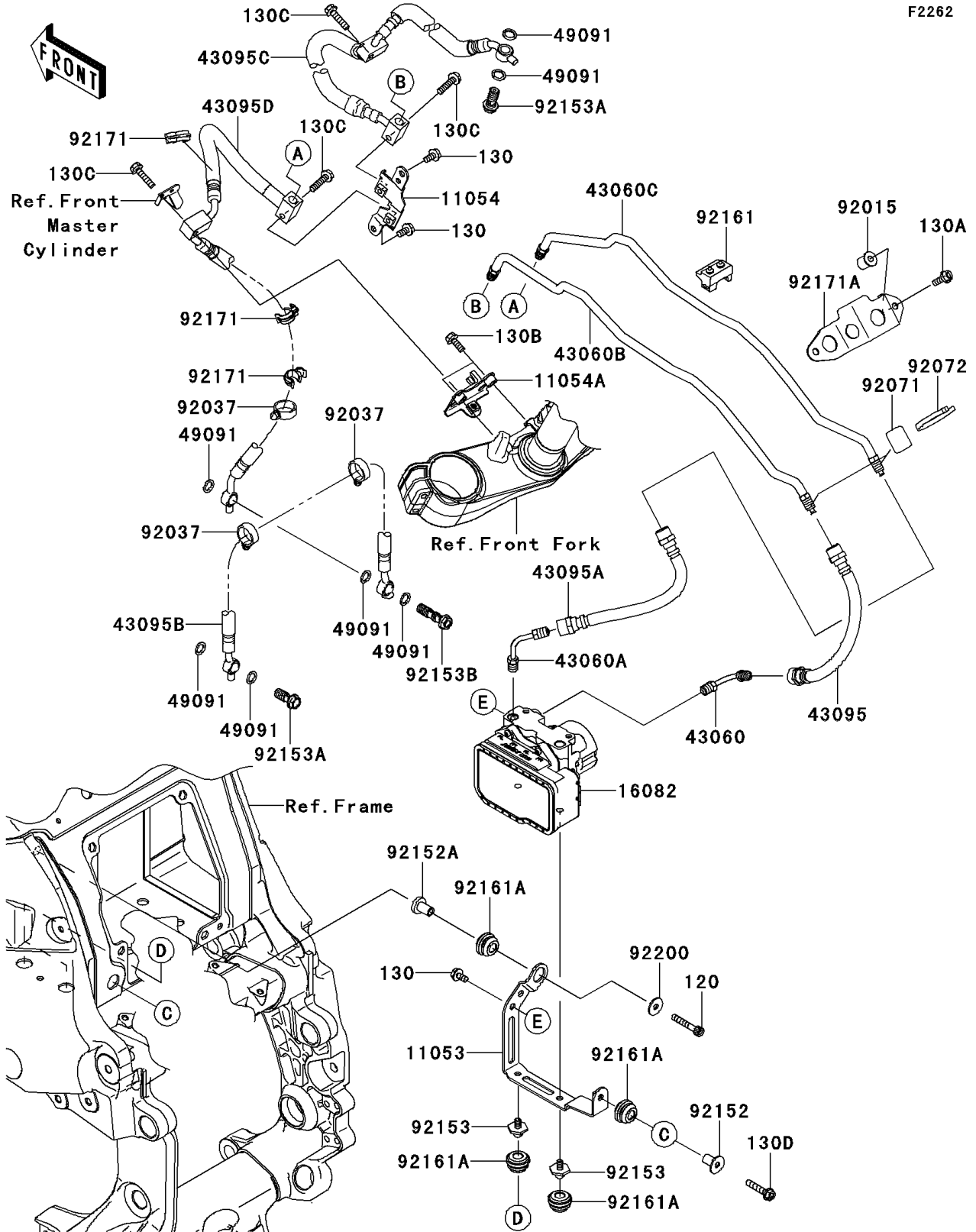


2009 Concours 14 ABS PARTS DIAGRAM

Brake Piping

F2262



2009 Concours 14 ABS PARTS LIST

Brake Piping

ITEM NAME	PART NUMBER	QUANTITY
BOLT-SOCKET,6X35 (Ref # 120)	120CA0635	1
BOLT-FLANGED,6X12 (Ref # 130)	130BA0612	3
BOLT-FLANGED,6X16 (Ref # 130A)	130BA0616	2
BOLT-FLANGED,6X18 (Ref # 130B)	130BA0618	2
BOLT-FLANGED,6X25 (Ref # 130C)	130BA0625	4
BOLT-FLANGED,6X30 (Ref # 130D)	130BA0630	1
BRACKET,ABS UNIT (Ref # 11053)	11053-1949	1
BRACKET,JOINT (Ref # 11054)	11054-0059	1
BRACKET (Ref # 11054A)	11054-0828	1
PUMP-ASSY-OIL,WET TYPE (Ref # 16082)	16082-0023	1
PIPE-BRAKE,HU-M/CYLINDER (Ref # 43060)	43060-0014	1
PIPE-BRAKE,HU-FR CALIPER (Ref # 43060A)	43060-0015	1
PIPE-BRAKE,HU-FR M/CYLINDER (Ref # 43060B)	43060-0016	1
PIPE-BRAKE,HU-FR CALIPER (Ref # 43060C)	43060-0017	1
HOSE-BRAKE,HU-FR M/CYLINDER (Ref # 43095)	43095-0219	1
HOSE-BRAKE,HU-FR CALIPER (Ref # 43095A)	43095-0220	1
HOSE-BRAKE,FR (Ref # 43095B)	43095-0223	1
HOSE-BRAKE,FR (Ref # 43095C)	43095-0301	1
HOSE-BRAKE,FR (Ref # 43095D)	43095-0302	1
WASHER-SEAL,10.1X14.5X1.5 (Ref # 49091)	49091-0001	7
NUT (Ref # 92015)	92015-1700	2
CLAMP,HOSE (Ref # 92037)	92037-1827	3
GROMMET (Ref # 92071)	92071-1143	2
BAND,L=148 (Ref # 92072)	92072-3768	2
COLLAR (Ref # 92152)	92152-0346	1
COLLAR (Ref # 92152A)	92152-0347	1
BOLT,6X10 (Ref # 92153)	92153-1381	2
BOLT,OIL,L=23 (Ref # 92153A)	92153-1419	2
BOLT,OIL,L=37 (Ref # 92153B)	92153-1438	1

2009 Concours 14 ABS PARTS LIST

Brake Piping

ITEM NAME	PART NUMBER	QUANTITY
DAMPER,HOSE CLAMP (Ref # 92161)	92161-0305	1
DAMPER (Ref # 92161A)	92161-0315	4
CLAMP,BRAKE HOSE (Ref # 92171)	92171-0607	3
CLAMP,BRAKE HOSE (Ref # 92171A)	92171-0630	1
WASHER,6.5X20X1.6 (Ref # 92200)	92200-0283	1