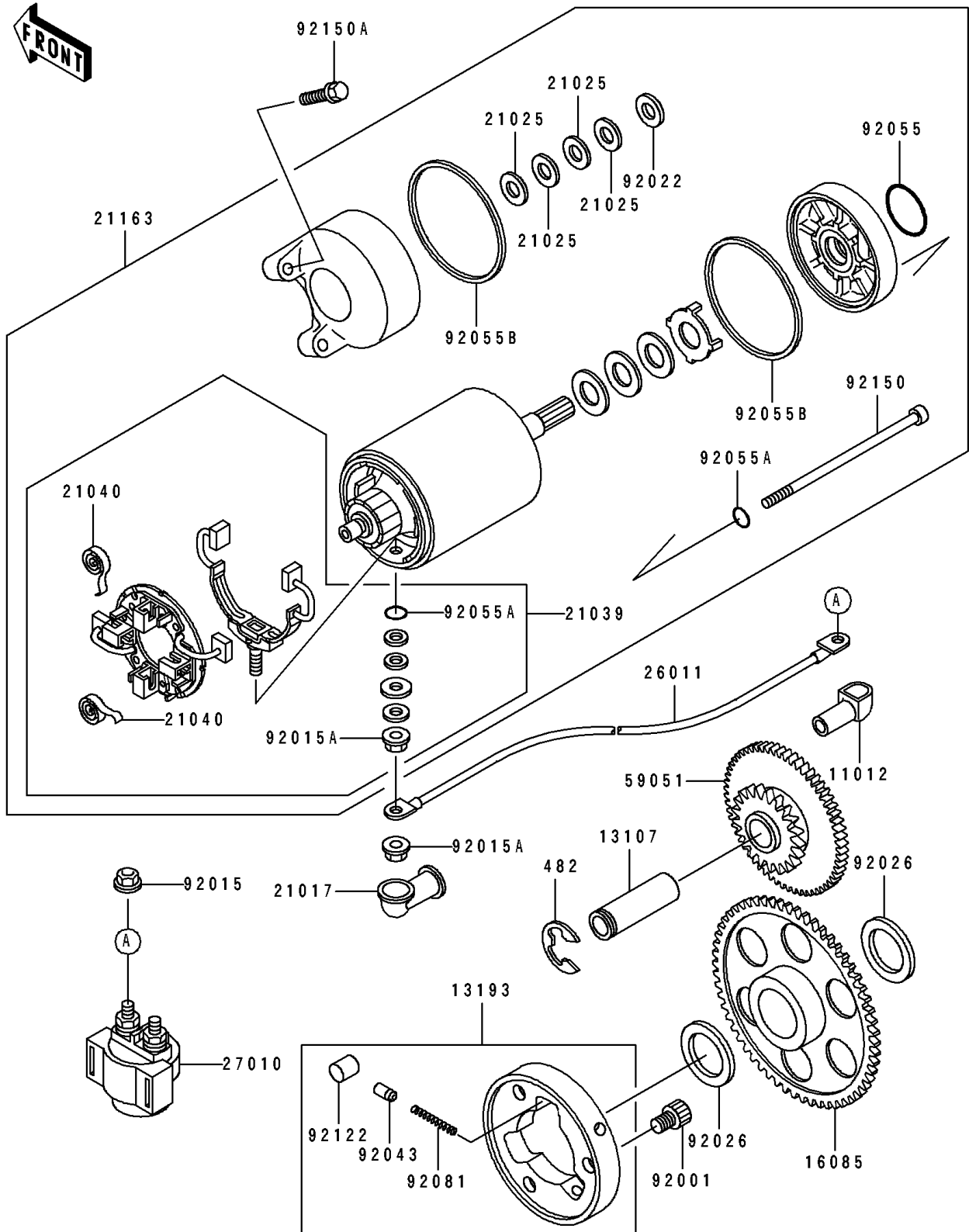


# 1997 Eliminator 600 PARTS DIAGRAM

Starter Motor

E1840



# 1997 Eliminator 600 PARTS LIST

## Starter Motor

| ITEM NAME                              | PART NUMBER | QUANTITY |
|--|-------------|----------|
| CAP,TERMINAL (Ref # 11012)             | 11012-1354  | 1        |
| SHAFT,IDLE GEAR (Ref # 13107)          | 13107-1144  | 1        |
| CLUTCH-ASSY-ONEWAY (Ref # 13193)       | 13193-1002  | 1        |
| GEAR,ONEWAY CLUTCH (Ref # 16085)       | 16085-1030  | 1        |
| GROMMET,STARTER TERMINAL (Ref # 21017) | 21017-017   | 1        |
| WASHER,9.1X18X0.2 (Ref # 21025)        | 21025-011   | 4        |
| BRUSH,CARBON (Ref # 21039)             | 21039-1062  | 1        |
| SPRING-BRUSH (Ref # 21040)             | 21040-1057  | 2        |
| STARTER-ELECTRIC (Ref # 21163)         | 21163-1230  | 1        |
| WIRE-LEAD,STARTER MOTOR (Ref # 26011)  | 26011-1251  | 1        |
| SWITCH,STARTER (Ref # 27010)           | 27010-1314  | 1        |
| GEAR-SPUR,IDLE (Ref # 59051)           | 59051-1138  | 1        |
| BOLT,SOCKET,8X10 (Ref # 92001)         | 92001-1424  | 3        |
| NUT,FLANGED,6MM (Ref # 92015)          | 92015-1193  | 2        |
| NUT,STARTER MOTOR (Ref # 92015A)       | 92015-1476  | 2        |
| WASHER,9.1X18X0.8 (Ref # 92022)        | 92022-1132  | 1        |
| SPACER,25X36X3.2 (Ref # 92026)         | 92026-1025  | 2        |
| PIN (Ref # 92043)                      | 92043-132   | 3        |
| RING-O (Ref # 92055)                   | 92055-1276  | 1        |
| RING-O,4.5X2.0 (Ref # 92055A)          | 92055-1370  | 3        |
| RING-O,STARTER MOTOR (Ref # 92055B)    | 92055-1381  | 2        |
| SPRING,COIL (Ref # 92081)              | 92081-159   | 3        |
| ROLLER (Ref # 92122)                   | 92122-006   | 3        |
| BOLT (Ref # 92150)                     | 92150-1243  | 2        |
| BOLT,6X25 (Ref # 92150A)               | 92150-1779  | 2        |
| CIRCLIP-TYPE-E (Ref # 482)             | 482J0300    | 1        |