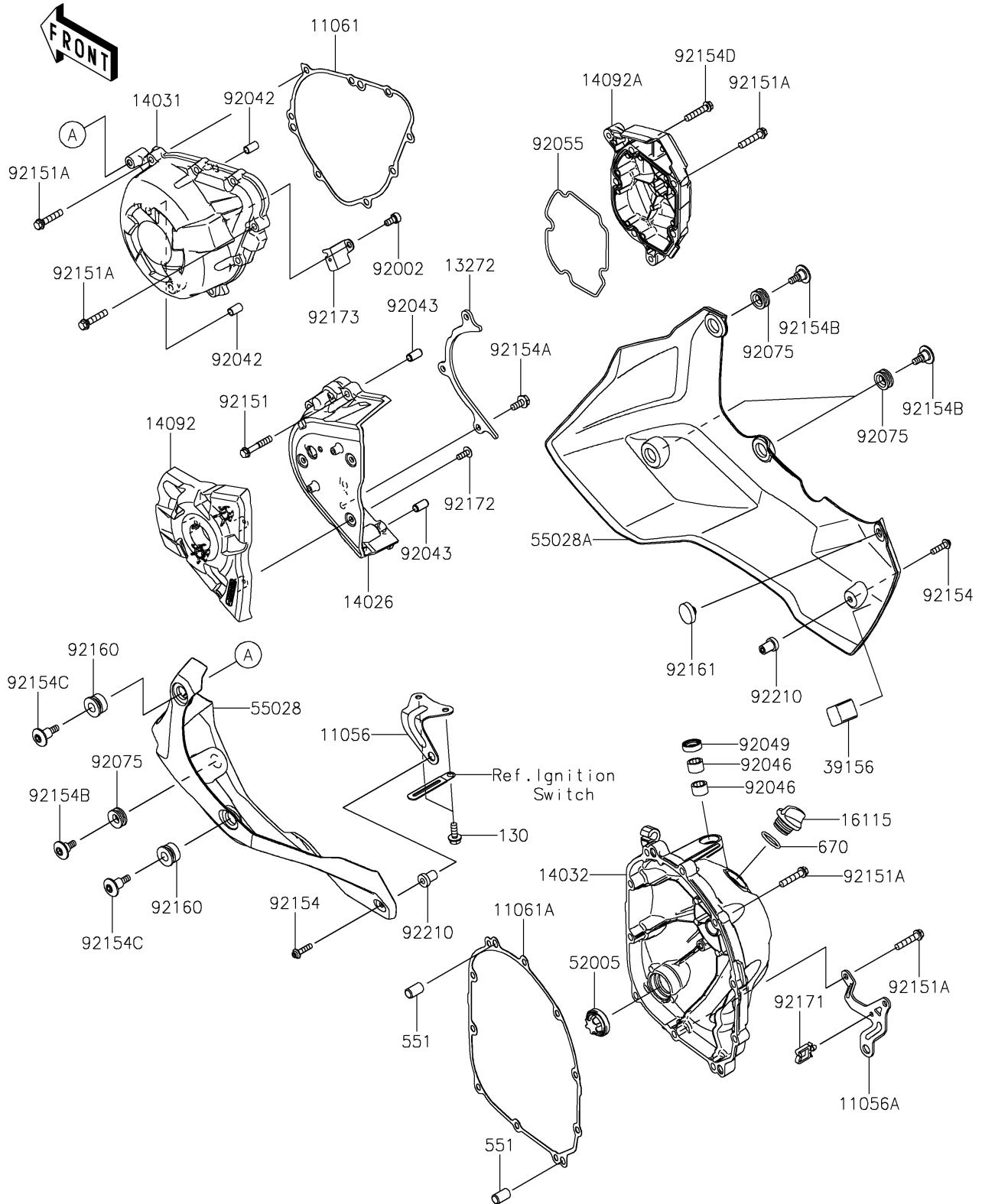


# 2021 VERSYS® 1000 SE LT+ PARTS DIAGRAM

Engine Cover(s)

E1431



## 2021 VERSYS® 1000 SE LT+ PARTS LIST

### Engine Cover(s)

ITEM NAME	PART NUMBER	QUANTITY
BRACKET,LWR COWLING,LH (Ref # 11056)	11056-1308	1
BRACKET,LWR COWLING,RH (Ref # 11056A)	11056-1481	1
GASKET,GENERATOR COVER (Ref # 11061)	11061-0403	1
GASKET,CLUTCH COVER (Ref # 11061A)	11061-0404	1
PLATE (Ref # 13272)	13272-0859	1
COVER-CHAIN (Ref # 14026)	14026-0093	1
COVER-GENERATOR (Ref # 14031)	14031-0596	1
COVER-CLUTCH (Ref # 14032)	14032-0590	1
COVER,OUTER (Ref # 14092)	14092-0032	1
COVER,PULSER (Ref # 14092A)	14092-0819	1
CAP-OIL FILLER (Ref # 16115)	16115-1053	1
PAD,LWR COWLING,RH (Ref # 39156)	39156-2483	1
GAUGE (Ref # 52005)	52005-1120	1
COWLING,LWR,LH (Ref # 55028)	55028-0688	1
COWLING,LWR,RH (Ref # 55028A)	55028-0689	1
BOLT,SOCKET,6X12 (Ref # 92002)	92002-1796	1
PIN,DOWEL,6.3X8X14 (Ref # 92042)	92042-007	2
PIN,6.2X8X14 (Ref # 92043)	92043-1263	2
BEARING-NEEDLE,HK1210FM (Ref # 92046)	92046-0034	2
SEAL-OIL,CLUTCH RELEASE (Ref # 92049)	92049-1475	1
RING-O,PULSER COVER (Ref # 92055)	92055-0199	1
DAMPER (Ref # 92075)	92075-1634	4
BOLT,6X35 (Ref # 92151)	92151-1135	4
BOLT,6X30 (Ref # 92151A)	92151-1873	22
BOLT,SOCKET,5X20 (Ref # 92154)	92154-0210	2
BOLT,FLANGED,6X14 (Ref # 92154A)	92154-0482	3
BOLT,SOCKET,6X18 (Ref # 92154B)	92154-2316	4
BOLT,SOCKET,6X24 (Ref # 92154C)	92154-2317	2
BOLT,6X30 (Ref # 92154D)	92154-2652	1

## 2021 VERSYS® 1000 SE LT+ PARTS LIST

### Engine Cover(s)

ITEM NAME	PART NUMBER	QUANTITY
DAMPER (Ref # 92160)	92160-1141	2
DAMPER,8X22X6 (Ref # 92161)	92161-0516	1
CLAMP (Ref # 92171)	92171-0290	1
SCREW,TAPPING,5X14 (Ref # 92172)	92172-0265	3
CLAMP (Ref # 92173)	92173-1321	1
NUT,5MM (Ref # 92210)	92210-0001	2
BOLT-FLANGED,6X16 (Ref # 130)	130CC0616	2
PIN-DOWEL,8X14 (Ref # 551)	551A0814	2
O RING,20MM (Ref # 670)	670B2020	1