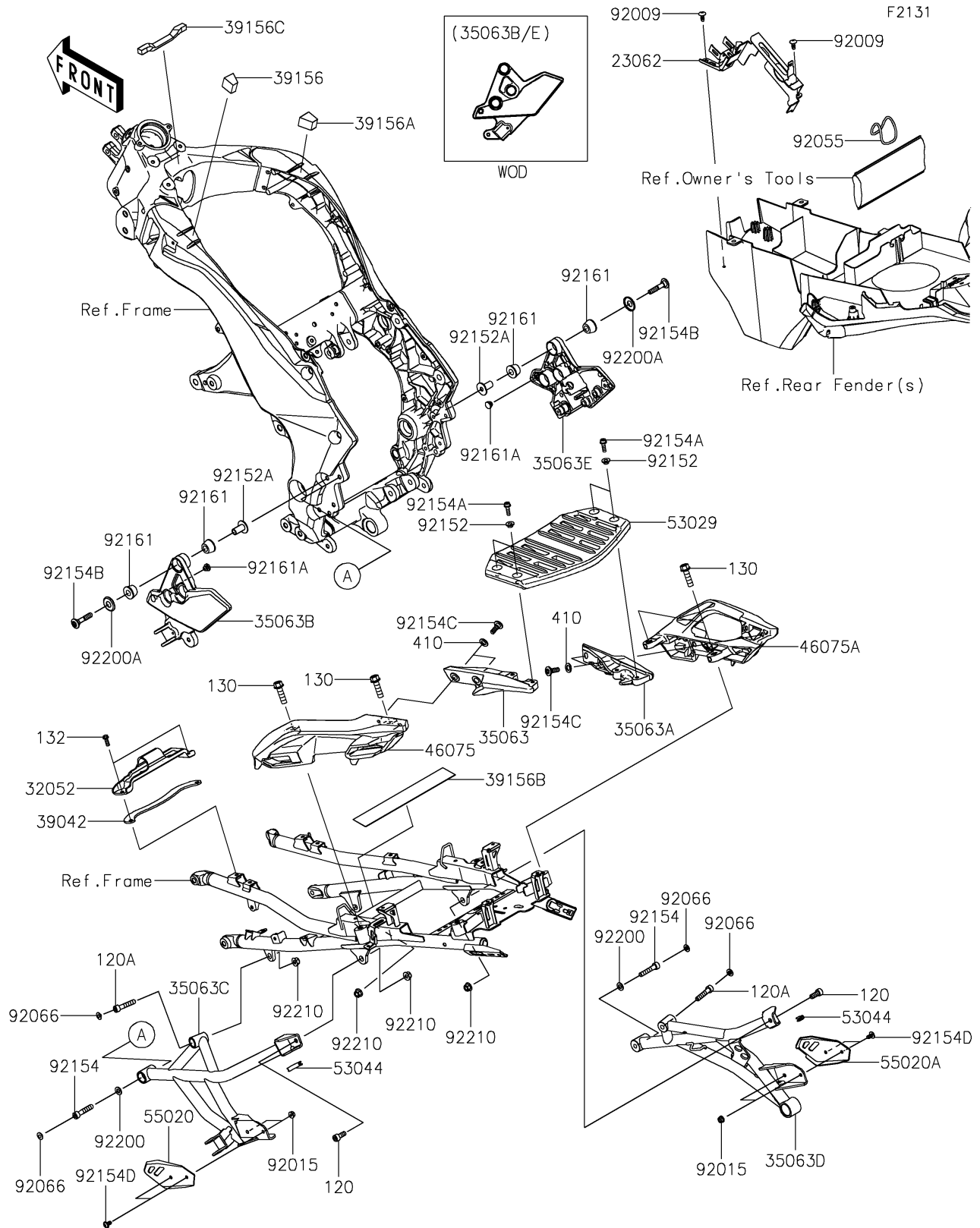


# 2021 VERSYS® 1000 SE LT+ PARTS DIAGRAM

## Frame Fittings



## 2021 VERSYS® 1000 SE LT+ PARTS LIST

### Frame Fittings

ITEM NAME	PART NUMBER	QUANTITY
BRACKET-COMP,ECU (Ref # 23062)	23062-1176	1
BRACKET-TANK (Ref # 32052)	32052-0719	1
STAY,CARRIER,LH,F.S.BLACK (Ref # 35063)	35063-0971-18R	1
STAY,CARRIER,RH,F.S.BLACK (Ref # 35063A)	35063-0972-18R	1
STAY,STEP,LH,FR,F.S.BLACK (Ref # 35063B)	35063-1445-18R	1
STAY,STEP,LH,RR,F.S.BLACK (Ref # 35063C)	35063-1446-18R	1
STAY,STEP,RH,RR,F.S.BLACK (Ref # 35063D)	35063-1447-18R	1
STAY,STEP,RH,FR,F.S.BLACK (Ref # 35063E)	35063-1477-18R	1
CROSSMEMBER (Ref # 39042)	39042-0554	1
PAD,LH (Ref # 39156)	39156-0660	1
PAD,RH (Ref # 39156A)	39156-0661	1
PAD,30X250X0.5 (Ref # 39156B)	39156-1873	1
PAD,10X130X10 (Ref # 39156C)	39156-1912	1
GRIP,TANDEM,LH,F.S.BLACK (Ref # 46075)	46075-0596-18R	1
GRIP,TANDEM,RH,F.S.BLACK (Ref # 46075A)	46075-0597-18R	1
CARRIER (Ref # 53029)	53029-0329	1
TRIM,L=30 (Ref # 53044)	53044-0001	2
GUARD,HEEL,LH (Ref # 55020)	55020-2263	1
GUARD,HEEL,RH (Ref # 55020A)	55020-2264	1
SCREW,TAPPING (Ref # 92009)	92009-1113	2
NUT,FLANGED,6MM,BLACK (Ref # 92015)	92015-1233	4
RING-O,44.7X3.5 (Ref # 92055)	92055-0912	1
PLUG (Ref # 92066)	92066-1216	4
COLLAR,6.5X10X6.2 (Ref # 92152)	92152-1511	4
COLLAR,8.8X12X25.6 (Ref # 92152A)	92152-1594	6
BOLT,SOCKET,8X40 (Ref # 92154)	92154-1001	2
BOLT,SOCKET,6X20 (Ref # 92154A)	92154-1674	4
BOLT,SOCKET,8X43.2 (Ref # 92154B)	92154-1703	6
BOLT,SOCKET,8X23 (Ref # 92154C)	92154-1901	4

## 2021 VERSYS® 1000 SE LT+ PARTS LIST

### Frame Fittings

ITEM NAME	PART NUMBER	QUANTITY
BOLT,SOCKET,6X12 (Ref # 92154D)	92154-4003	4
DAMPER,11.8X26X15 (Ref # 92161)	92161-1000	12
DAMPER (Ref # 92161A)	92161-1084	2
WASHER,8.4X16X1.6 (Ref # 92200)	92200-0807	2
WASHER,12.5X30X3 (Ref # 92200A)	92200-1729	6
NUT,FLANGED,LOCK,8MM (Ref # 92210)	92210-0159	4
BOLT-SOCKET,8X20 (Ref # 120)	120CB0820	2
BOLT-SOCKET,8X40 (Ref # 120A)	120CB0840	2
BOLT-FLANGED,10X35 (Ref # 130)	130CA1035	4
BOLT-FLANGED-SMALL,6X16 (Ref # 132)	132BA0616	2
WASHER-PLAIN-SMALL,10MM (Ref # 410)	410AA1000	4