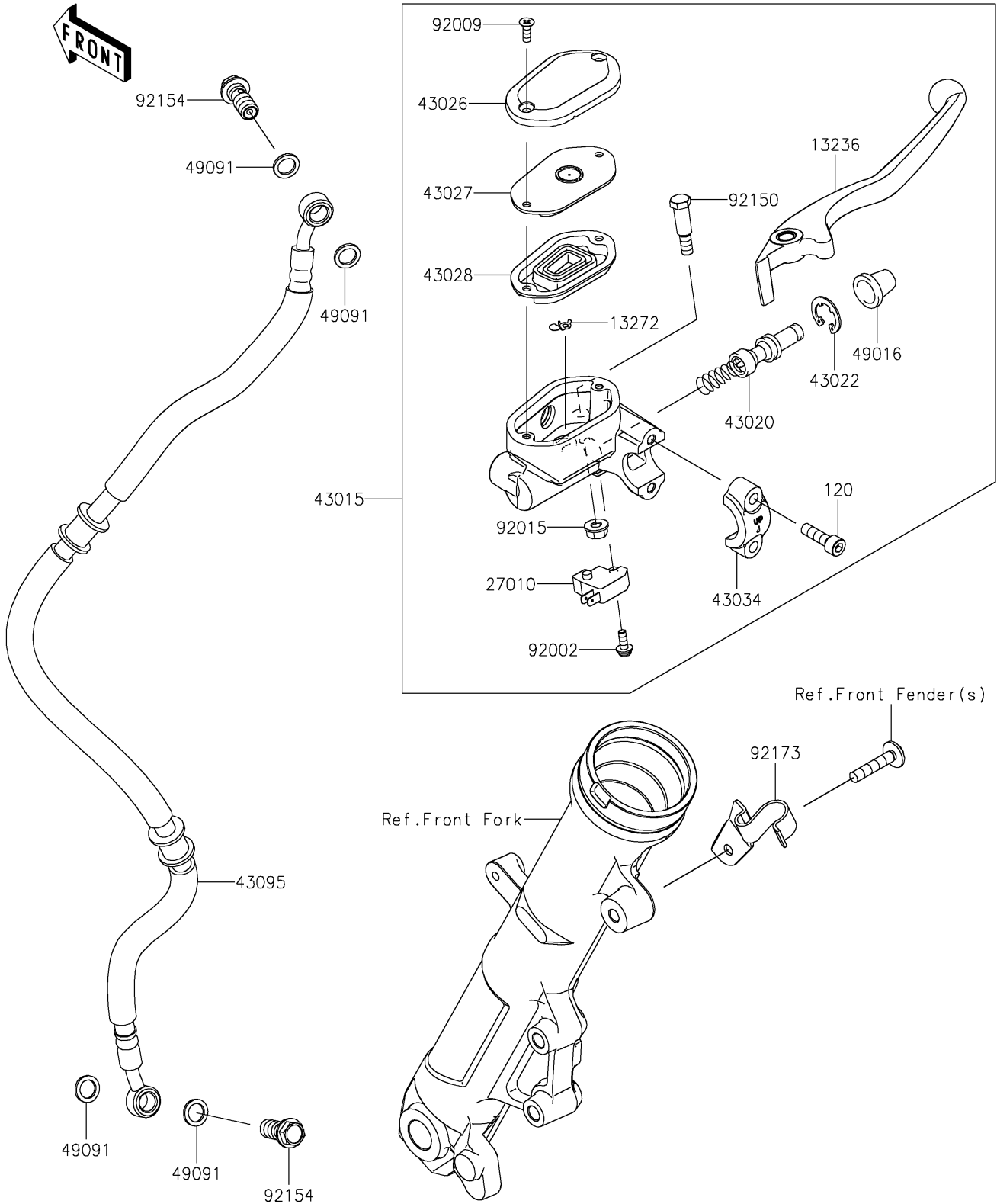


# 2022 NINJA® 400 PARTS DIAGRAM

## Front Master Cylinder

F2291



## 2022 NINJA® 400 PARTS LIST

### Front Master Cylinder

| ITEM NAME                                  | PART NUMBER | QUANTITY |
|--|-------------|----------|
| LEVER-COMP (Ref # 13236)                   | 13236-0811  | 1        |
| PLATE (Ref # 13272)                        | 13272-0573  | 1        |
| SWITCH,BRAKE (Ref # 27010)                 | 27010-0762  | 1        |
| CYLINDER-ASSY-MASTER,FR (Ref # 43015)      | 43015-0713  | 1        |
| PISTON-COMP-BRAKE (Ref # 43020)            | 43020-0022  | 1        |
| STOPPER-BRAKE,PISTON (Ref # 43022)         | 43022-1010  | 1        |
| CAP-BRAKE (Ref # 43026)                    | 43026-0026  | 1        |
| PLATE-DIAPHRAGM (Ref # 43027)              | 43027-0010  | 1        |
| DIAPHRAGM (Ref # 43028)                    | 43028-0022  | 1        |
| HOLDER-BRAKE,MASTER CYLINDER (Ref # 43034) | 43034-1016  | 1        |
| HOSE-BRAKE,FR M/CYLINDER-HU (Ref # 43095)  | 43095-1491  | 1        |
| COVER-SEAL,MASTER CYLINDER (Ref # 49016)   | 49016-1044  | 1        |
| WASHER-SEAL,10.1X14.5X1.5 (Ref # 49091)    | 49091-0001  | 4        |
| BOLT,SCREW,4X12 (Ref # 92002)              | 92002-1323  | 1        |
| SCREW,4MM (Ref # 92009)                    | 92009-1458  | 2        |
| NUT,FLANGED,6MM,BLACK (Ref # 92015)        | 92015-1233  | 1        |
| BOLT,LEVER SET (Ref # 92150)               | 92150-1451  | 1        |
| BOLT,BANJO,10X23 (Ref # 92154)             | 92154-1712  | 2        |
| CLAMP,HOSE&SENSOR (Ref # 92173)            | 92173-1774  | 1        |
| BOLT-SOCKET,6X20 (Ref # 120)               | 120CB0620   | 2        |