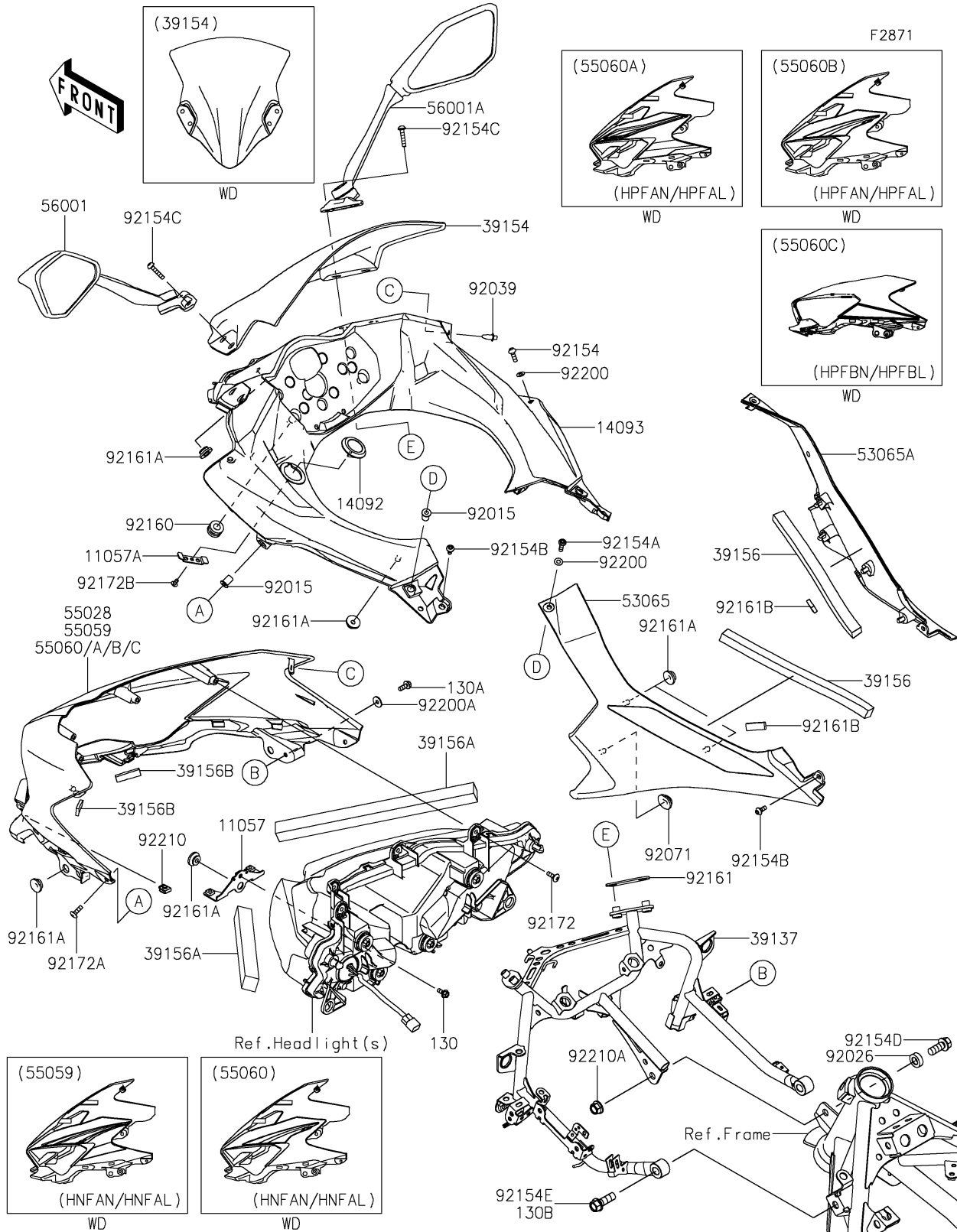


2023 Ninja® 400 PARTS DIAGRAM

Cowling



2023 Ninja® 400 PARTS LIST

Cowling

| ITEM NAME | PART NUMBER | QUANTITY |
|--------------------------------------|----------------|----------|
| BRACKET,HEAD LAMP,LWR (Ref # 11057) | 11057-1199 | 1 |
| BRACKET,DC SOCKET (Ref # 11057A) | 11057-1249 | 1 |
| COVER,DC SOCKET (Ref # 14092) | 14092-0214 | 1 |
| COVER,METER (Ref # 14093) | 14093-0644 | 1 |
| STAY-COMP,UPP COWL. (Ref # 39137) | 39137-0679 | 1 |
| WINDSHIELD (Ref # 39154) | 39154-0369 | 1 |
| PAD,13X240X16 (Ref # 39156) | 39156-2297 | 2 |
| PAD,20X290X20 (Ref # 39156A) | 39156-2357 | 2 |
| PAD,10X35X4 (Ref # 39156B) | 39156-2380 | 2 |
| COVER SEAT,LH (Ref # 53065) | 53065-0042 | 1 |
| COVER SEAT,RH (Ref # 53065A) | 53065-0043 | 1 |
| COWLING,UPP,M.C.GRAY (Ref # 55028) | 55028-0690-51A | 1 |
| COWLING,UPP,L.GREEN (Ref # 55060A) | 55060-5155-777 | 1 |
| COWLING,UPP,P.B.WHITE (Ref # 55060B) | 55060-5175-54X | 1 |
| MIRROR-ASSY,LH (Ref # 56001) | 56001-0378 | 1 |
| MIRROR-ASSY,RH (Ref # 56001A) | 56001-0379 | 1 |
| NUT,WELL,5MM (Ref # 92015) | 92015-1757 | 4 |
| SPACER,10.5X20X6.5 (Ref # 92026) | 92026-0835 | 1 |
| RIVET (Ref # 92039) | 92039-0060 | 2 |
| GROMMET,20X24X7.5 (Ref # 92071) | 92071-0766 | 2 |
| BOLT,SOCKET,5X16 (Ref # 92154) | 92154-0209 | 2 |
| BOLT,SOCKET,5X20 (Ref # 92154A) | 92154-0210 | 2 |
| BOLT,SOCKET,5X12 (Ref # 92154B) | 92154-1421 | 4 |
| BOLT,SOCKET,6X25 (Ref # 92154C) | 92154-2806 | 4 |
| BOLT-FLANGED,10X25 (Ref # 92154D) | 92154-4058 | 1 |
| BOLT,FLANGED,10X30 (Ref # 92154E) | 92154-4393 | 2 |
| DAMPER,10X20X12 (Ref # 92160) | 92160-1167 | 2 |
| DAMPER (Ref # 92161) | 92161-1467 | 2 |
| DAMPER (Ref # 92161A) | 92161-1531 | 10 |

2023 Ninja® 400 PARTS LIST

Cowling

| ITEM NAME | PART NUMBER | QUANTITY |
|--|-------------|----------|
| DAMPER,10X28X5 (Ref # 92161B) | 92161-2107 | 2 |
| SCREW,TAPPING,5X16 (Ref # 92172) | 92172-0427 | 4 |
| SCREW,TRUSS HEAD,5X16 (Ref # 92172A) | 92172-1222 | 2 |
| SCREW,CROSS,4X8 (Ref # 92172B) | 92172-1227 | 1 |
| WASHER,NYLONE,5.3X11.5X0.5 (Ref # 92200) | 92200-0006 | 4 |
| WASHER,5.2X16X1.2 (Ref # 92200A) | 92200-0583 | 2 |
| NUT (Ref # 92210) | 92210-0571 | 2 |
| NUT,LOCK,FLANGED,10MM (Ref # 92210A) | 92210-1081 | 1 |
| BOLT-FLANGED,5X12 (Ref # 130) | 130BA0512 | 1 |
| BOLT-FLANGED,5X14 (Ref # 130A) | 130BA0514 | 2 |