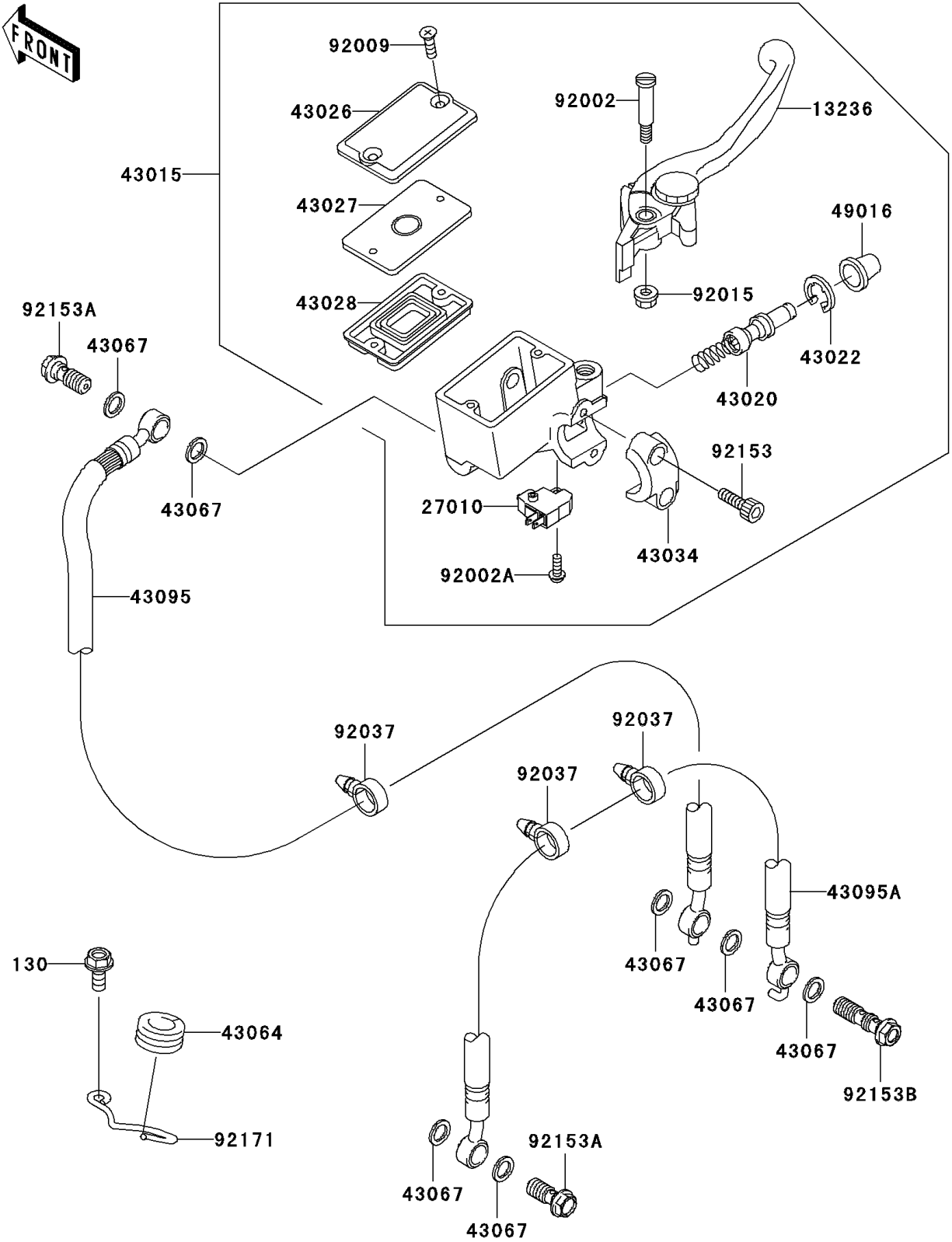


# 2005 Z1000 PARTS DIAGRAM

## Front Master Cylinder

F2291



## 2005 Z1000 PARTS LIST

### Front Master Cylinder

| ITEM NAME                                  | PART NUMBER | QUANTITY |
|--|-------------|----------|
| BOLT-FLANGED (Ref # 130)                   | 130L0614    | 1        |
| LEVER-COMP,FRONT BRAKE (Ref # 13236)       | 13236-1337  | 1        |
| SWITCH,BRAKE (Ref # 27010)                 | 27010-0025  | 1        |
| CYLINDER-ASSY-MASTER,FR (Ref # 43015)      | 43015-0011  | 1        |
| PISTON-COMP-BRAKE,FR (Ref # 43020)         | 43020-1054  | 1        |
| STOPPER-BRAKE,PISTON (Ref # 43022)         | 43022-1010  | 1        |
| CAP-BRAKE (Ref # 43026)                    | 43026-1076  | 1        |
| PLATE-DIAPHRAGM (Ref # 43027)              | 43027-1055  | 1        |
| DIAPHRAGM,MASTER CYLINDER (Ref # 43028)    | 43028-1058  | 1        |
| HOLDER-BRAKE,MASTER CYLINDER (Ref # 43034) | 43034-1053  | 1        |
| GROMMET,HOSE CLAMP (Ref # 43064)           | 43064-007   | 1        |
| WASHER,10.5X15X1.5 (Ref # 43067)           | 43067-001   | 7        |
| HOSE-BRAKE,FR (Ref # 43095)                | 43095-1291  | 1        |
| HOSE-BRAKE,FR (Ref # 43095A)               | 43095-1338  | 1        |
| COVER-SEAL,MASTER CYLINDER (Ref # 49016)   | 49016-1044  | 1        |
| BOLT,LEVER SET,BLACK (Ref # 92002)         | 92002-1322  | 1        |
| BOLT,SCREW,4X12 (Ref # 92002A)             | 92002-1323  | 1        |
| SCREW,4MM (Ref # 92009)                    | 92009-1458  | 2        |
| NUT,FLANGED,6MM,BLACK (Ref # 92015)        | 92015-1233  | 1        |
| CLAMP,HOSE (Ref # 92037)                   | 92037-1827  | 3        |
| BOLT,SOCKET,6X20 (Ref # 92153)             | 92153-0417  | 2        |
| BOLT,OIL,L=23 (Ref # 92153A)               | 92153-0627  | 2        |
| BOLT,OIL,L=37 (Ref # 92153B)               | 92153-0628  | 1        |
| CLAMP,BRAKE HOSE (Ref # 92171)             | 92171-1574  | 1        |