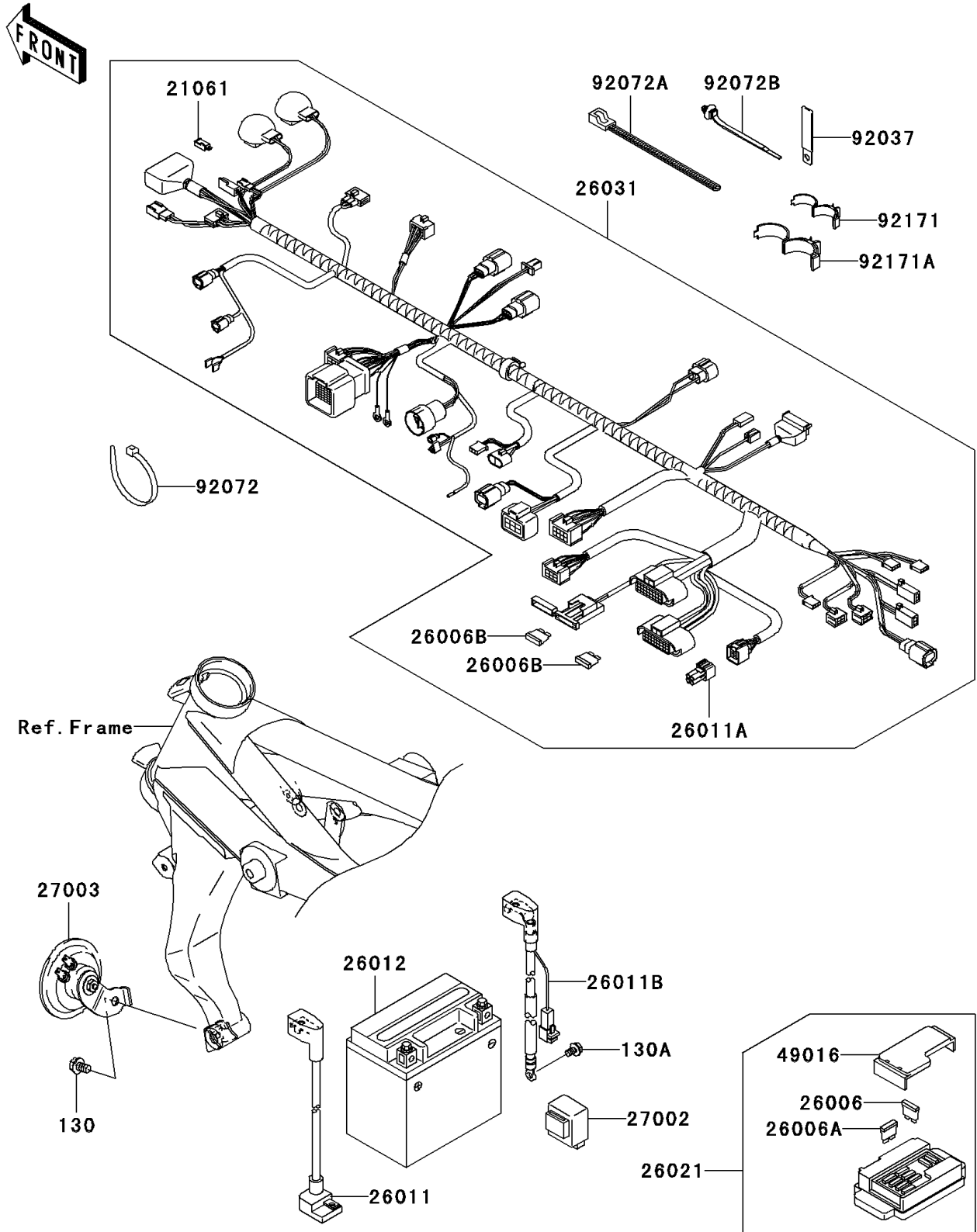


# 2005 Z1000 PARTS DIAGRAM

Chassis Electrical Equipment(A3)

F2760A



## 2005 Z1000 PARTS LIST

### Chassis Electrical Equipment(A3)

ITEM NAME	PART NUMBER	QUANTITY
BOLT-FLANGED (Ref # 130)	130L0812	1
BOLT-FLANGED,6X10 (Ref # 130A)	130V0610	1
RECTIFIER (Ref # 21061)	21061-0001	1
FUSE,30A-G (Ref # 26006)	26006-1067	1
FUSE,10A-R (Ref # 26006A)	26006-1068	8
FUSE,15A (Ref # 26006B)	26006-1075	2
WIRE-LEAD,BATTERY(+) (Ref # 26011)	26011-0006	1
WIRE-LEAD (Ref # 26011A)	26011-0037	1
WIRE-LEAD,BATTERY(-) (Ref # 26011B)	26011-0041	1
BATTERY,YTX9-BS,12V 8AH (Ref # 26012)	26012-1326	1
JUNCTION BOX (Ref # 26021)	26021-0001	1
HARNESS,MAIN (Ref # 26031)	26031-0257	1
RELAY-ASSY,TURN SIGNAL (Ref # 27002)	27002-1101	1
HORN (Ref # 27003)	27003-0015	1
COVER-SEAL,FUSE (Ref # 49016)	49016-1177	1
CLAMP,L=60 (Ref # 92037)	92037-1069	1
BAND,L=202 (Ref # 92072)	92072-1195	1
BAND,L=250 (Ref # 92072A)	92072-1237	1
BAND (Ref # 92072B)	92072-1414	2
CLAMP,DIA=15 (Ref # 92171)	92171-1424	3
CLAMP,DIA=25 (Ref # 92171A)	92171-1559	2