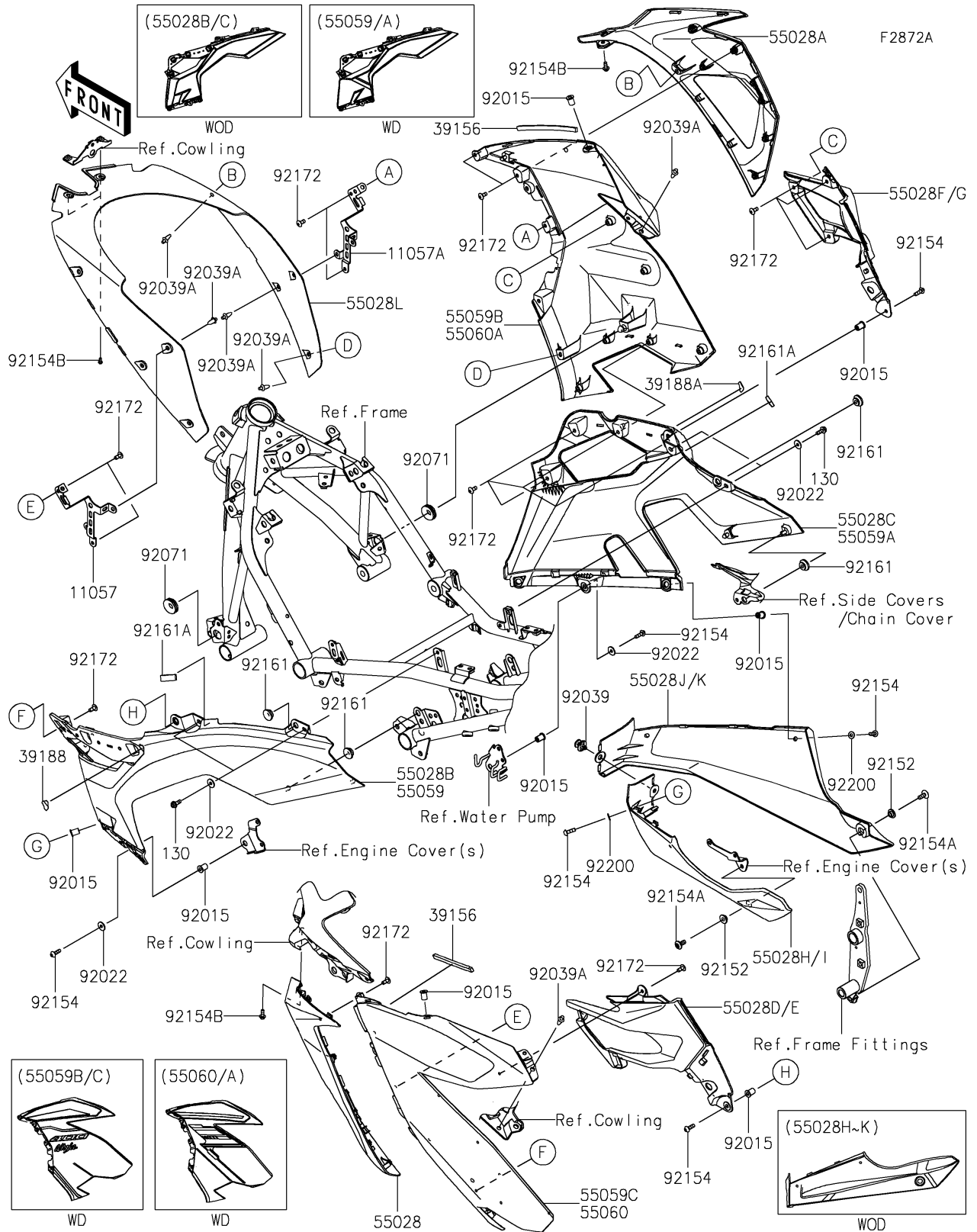


2022 Ninja® 400 ABS PARTS DIAGRAM

Cowling Lower(GNFAN/GNFAL)



2022 Ninja® 400 ABS PARTS LIST

Cowling Lowers(GNFAN/GNFAL)

| ITEM NAME | PART NUMBER | QUANTITY |
|---|----------------|----------|
| BRACKET,COWL.,FR,LH (Ref # 11057) | 11057-1197 | 1 |
| BRACKET,COWL.,FR,RH (Ref # 11057A) | 11057-1198 | 1 |
| PAD,7X130X5 (Ref # 39156) | 39156-2296 | 2 |
| TAPE,LWR SIDE COWL.,LH (Ref # 39188) | 39188-0573 | 1 |
| TAPE,LWR SIDE COWL.,RH (Ref # 39188A) | 39188-0574 | 1 |
| COWLING,SIDE,FR,LH (Ref # 55028) | 55028-0637 | 1 |
| COWLING,SIDE,FR,RH (Ref # 55028A) | 55028-0638 | 1 |
| COWLING,SIDE,LWR,LH,M.G.GRAY (Ref # 55028B) | 55028-0641-45W | 1 |
| COWLING,SIDE,LWR,RH,M.G.GRAY (Ref # 55028C) | 55028-0642-45W | 1 |
| COWLING,FIN,LH,M.G.GRAY (Ref # 55028D) | 55028-0643-45W | 1 |
| COWLING,FIN,LH,EBONY (Ref # 55028E) | 55028-0643-H8 | 1 |
| COWLING,FIN,RH,M.G.GRAY (Ref # 55028F) | 55028-0644-45W | 1 |
| COWLING,FIN,RH,EBONY (Ref # 55028G) | 55028-0644-H8 | 1 |
| COWLING,LWR,LH,P.B.WHITE (Ref # 55028H) | 55028-0645-54X | 1 |
| COWLING,LWR,LH,M.F.S.BLACK (Ref # 55028I) | 55028-0645-739 | 1 |
| COWLING,LWR,RH,P.B.WHITE (Ref # 55028J) | 55028-0646-54X | 1 |
| COWLING,LWR,RH,M.F.S.BLACK (Ref # 55028K) | 55028-0646-739 | 1 |
| COWLING,INNER (Ref # 55028L) | 55028-0647 | 1 |
| COWLING,SIDE,LWR,LH,EBONY (Ref # 55059) | 55059-5311-H8 | 1 |
| COWLING,SIDE,LWR,RH,EBONY (Ref # 55059A) | 55059-5316-H8 | 1 |
| COWLING,SIDE,UPP,RH,EBONY (Ref # 55059B) | 55059-5372-H8 | 1 |
| COWLING,SIDE,UPP,LH,EBONY (Ref # 55059C) | 55059-5374-H8 | 1 |
| COWLING,SIDE,UPP,LH,M.M.T.BLUE (Ref # 55060) | 55060-5011-68M | 1 |
| COWLING,SIDE,UPP,RH,M.M.T.BLUE (Ref # 55060A) | 55060-5012-68M | 1 |
| NUT,WELL,5MM (Ref # 92015) | 92015-1757 | 10 |
| WASHER,5.2X16X1.2 (Ref # 92022) | 92022-263 | 6 |
| RIVET,HOLE 8MM (Ref # 92039) | 92039-0014 | 1 |
| RIVET (Ref # 92039A) | 92039-0060 | 10 |
| GROMMET (Ref # 92071) | 92071-1043 | 2 |

2022 Ninja® 400 ABS PARTS LIST

Cowling Lowers(GNFAN/GNFAL)

| ITEM NAME | PART NUMBER | QUANTITY |
|---------------------------------|-------------|----------|
| COLLAR,6.5X10X5.6 (Ref # 92152) | 92152-0445 | 2 |
| BOLT,SOCKET,5X16 (Ref # 92154) | 92154-0209 | 8 |
| BOLT,SOCKET,6X14 (Ref # 92154A) | 92154-0932 | 2 |
| BOLT,SOCKET,5X12 (Ref # 92154B) | 92154-1421 | 4 |
| DAMPER (Ref # 92161) | 92161-1531 | 6 |
| DAMPER,10X28X5 (Ref # 92161A) | 92161-2107 | 2 |
| SCREW,5X12 (Ref # 92172) | 92172-0821 | 22 |
| WASHER,5.2X12X1.0 (Ref # 92200) | 92200-0784 | 4 |
| BOLT-FLANGED,5X14 (Ref # 130) | 130BA0514 | 4 |