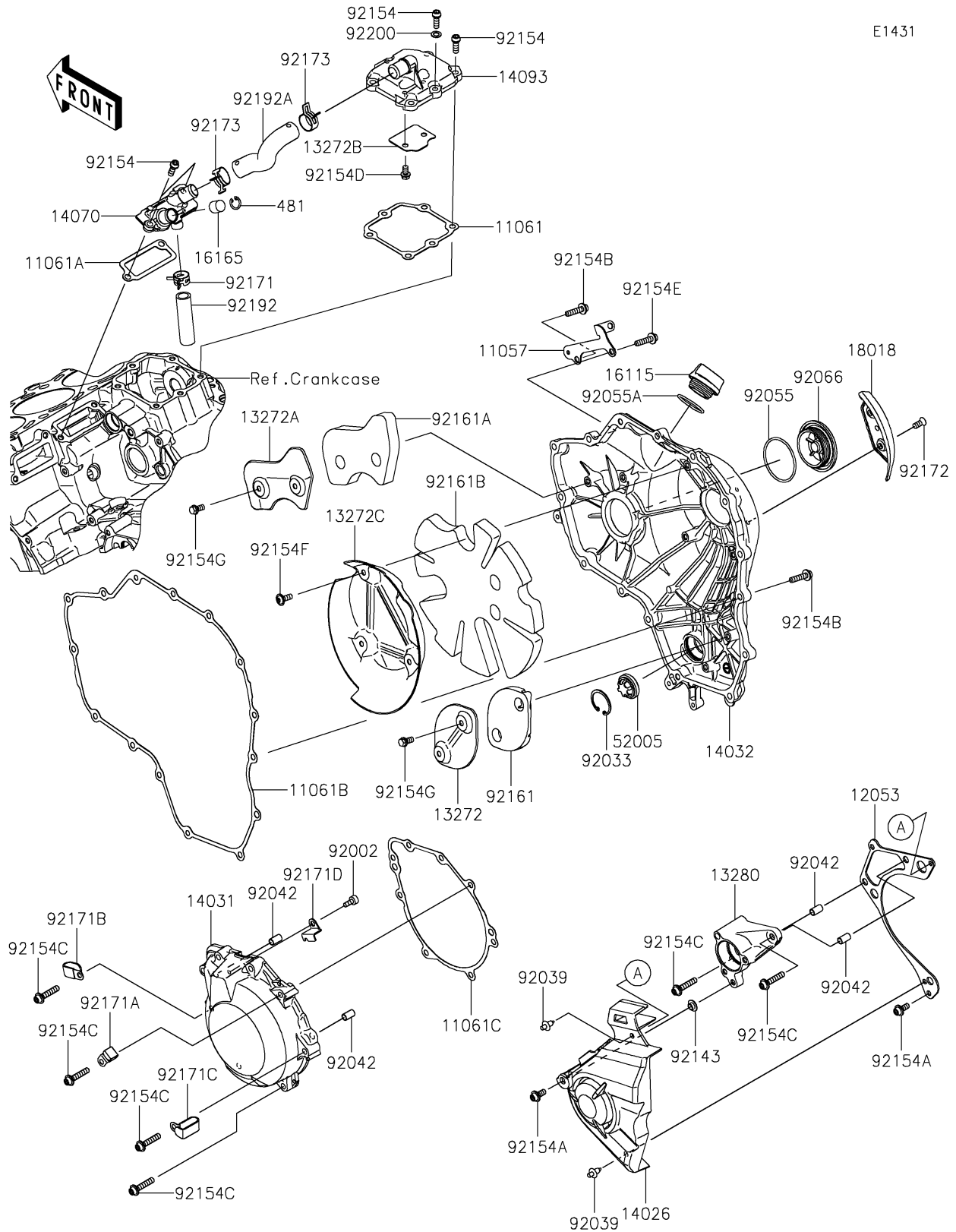


# 2023 NINJA H2® SX SE PARTS DIAGRAM

Engine Cover(s)

E1431



## 2023 NINJA H2® SX SE PARTS LIST

### Engine Cover(s)

ITEM NAME	PART NUMBER	QUANTITY
BRACKET (Ref # 11057)	11057-7255	1
GASKET,BALANCER COVER (Ref # 11061)	11061-0941	1
GASKET,BREATHER (Ref # 11061A)	11061-0942	1
GASKET,CLUTCH COVER (Ref # 11061B)	11061-0944	1
GASKET,GENERATOR COVER (Ref # 11061C)	11061-0945	1
GUIDE-CHAIN (Ref # 12053)	12053-0247	1
PLATE (Ref # 13272)	13272-1852	1
PLATE (Ref # 13272A)	13272-1854	1
PLATE (Ref # 13272B)	13272-1901	1
PLATE (Ref # 13272C)	13272-2476	1
HOLDER,CLUTCH RELEASE (Ref # 13280)	13280-0903	1
COVER-CHAIN (Ref # 14026)	14026-0142	1
COVER-GENERATOR (Ref # 14031)	14031-0647	1
COVER-CLUTCH (Ref # 14032)	14032-0683	1
BODY-BREATHER (Ref # 14070)	14070-0013	1
COVER,BALANCER (Ref # 14093)	14093-0631	1
CAP-OIL FILLER (Ref # 16115)	16115-1009	1
SEPARATOR (Ref # 16165)	16165-0011	1
PLATE-HEAT GUARD (Ref # 18018)	18018-0590	1
GAUGE (Ref # 52005)	52005-1120	1
BOLT,SOCKET,6X12 (Ref # 92002)	92002-1796	1
RING-SNAP (Ref # 92033)	92033-1305	1
RIVET (Ref # 92039)	92039-0068	2
PIN,DOWEL,6.3X8X14 (Ref # 92042)	92042-007	4
RING-O,49.7X2.4 (Ref # 92055)	92055-0183	1
RING-O,31.5X2.6 (Ref # 92055A)	92055-049	1
PLUG (Ref # 92066)	92066-0800	1
COLLAR (Ref # 92143)	92143-1331	1
BOLT,SOCKET,6X18 (Ref # 92154)	92154-1455	8

## 2023 NINJA H2® SX SE PARTS LIST

### Engine Cover(s)

ITEM NAME	PART NUMBER	QUANTITY
BOLT,SOCKET,6X14 (Ref # 92154A)	92154-1460	2
BOLT,SOCKET,6X25 (Ref # 92154B)	92154-1461	14
BOLT,SOCKET,6X30 (Ref # 92154C)	92154-1463	10
BOLT,FLANGED,6X10 (Ref # 92154D)	92154-2819	2
BOLT,SOCKET,6X25 (Ref # 92154E)	92154-2826	1
BOLT,TORX,6X16 (Ref # 92154F)	92154-2920	3
BOLT,FLANGED,6X12 (Ref # 92154G)	92154-2922	4
DAMPER (Ref # 92161)	92161-1716	1
DAMPER (Ref # 92161A)	92161-1718	1
DAMPER (Ref # 92161B)	92161-2079	1
CLAMP (Ref # 92171)	92171-0533	1
CLAMP (Ref # 92171A)	92171-0534	1
CLAMP (Ref # 92171B)	92171-0739	1
CLAMP (Ref # 92171C)	92171-0911	1
CLAMP (Ref # 92171D)	92171-0938	1
SCREW,TORX,6X14 (Ref # 92172)	92172-0901	2
CLAMP (Ref # 92173)	92173-1702	2
TUBE,BREATHER IN-SIDE (Ref # 92192)	92192-1432	1
TUBE,BREATHER OUT-SIDE (Ref # 92192A)	92192-1440	1
WASHER,6.8X11.5X1.0 (Ref # 92200)	92200-1461	1
CIRCLIP-TYPE-C (Ref # 481)	481J1400	1