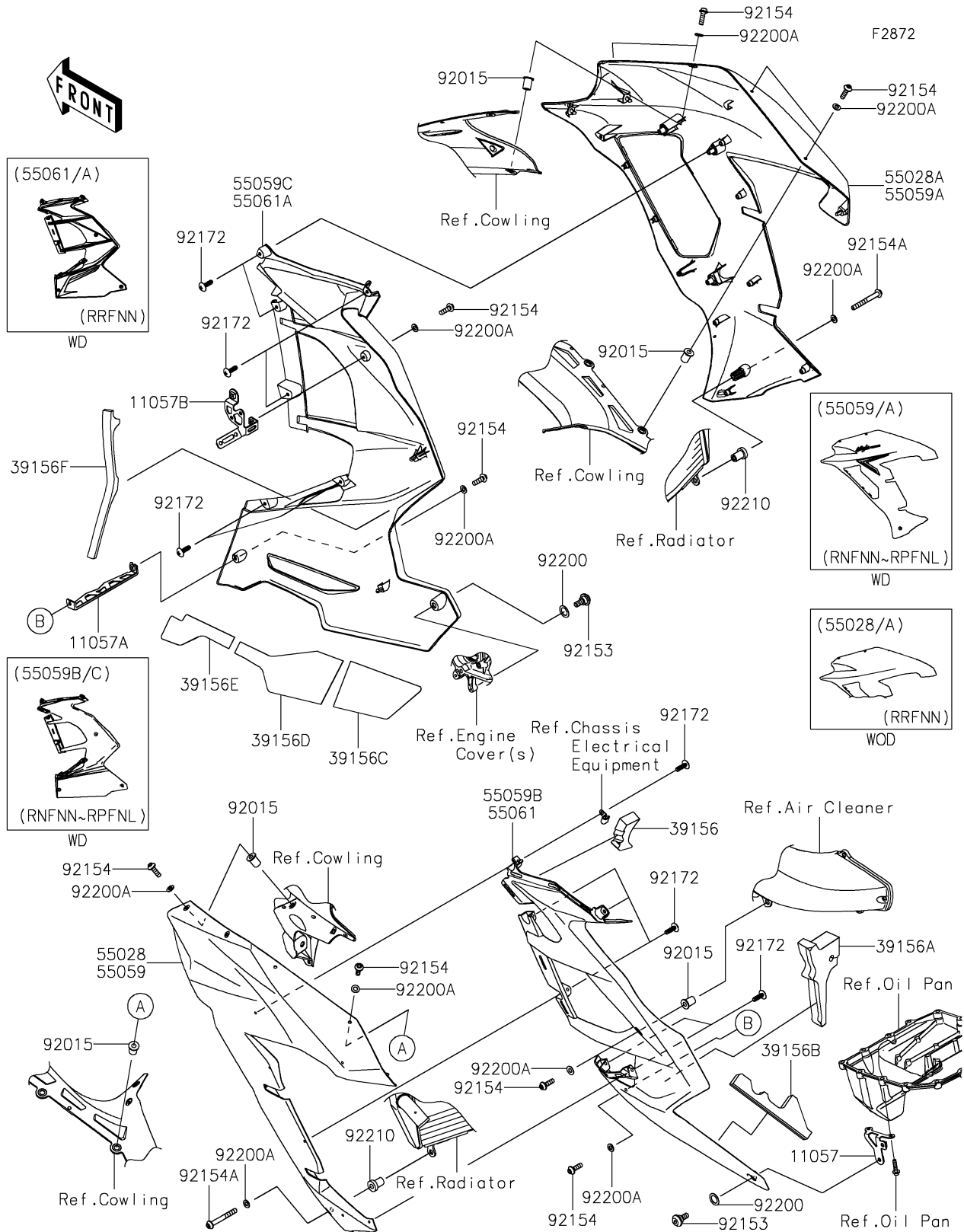




# 2022 NINJA H2<sup>®</sup> SX SE PARTS DIAGRAM

## Cowling lowers



## 2022 NINJA H2® SX SE PARTS LIST

### Cowling Lowers

| ITEM NAME                                     | PART NUMBER    | QUANTITY |
|---|----------------|----------|
| BRACKET,LWR COWL.,RR (Ref # 11057)            | 11057-1286     | 1        |
| BRACKET,CONNECTING,LWR (Ref # 11057A)         | 11057-1287     | 1        |
| BRACKET,SIDE COWL.,W/ABS PIPE (Ref # 11057B)  | 11057-1297     | 1        |
| PAD,DUCT (Ref # 39156)                        | 39156-2255     | 1        |
| PAD,GENERATOR COVER (Ref # 39156A)            | 39156-2377     | 1        |
| PAD,30X60X30 (Ref # 39156B)                   | 39156-2385     | 1        |
| PAD,HEAT INSULATION,RR (Ref # 39156C)         | 39156-2733     | 1        |
| PAD,HEAT INSULATION,MID (Ref # 39156D)        | 39156-2734     | 1        |
| PAD,HEAT INSULATION,FR (Ref # 39156E)         | 39156-2735     | 1        |
| PAD,RESERVOIR (Ref # 39156F)                  | 39156-2745     | 1        |
| COWLING,SIDE,FR,LH,M.D.BLACK (Ref # 55059)    | 55059-5451-17K | 1        |
| COWLING,SIDE,FR,RH,M.D.BLACK (Ref # 55059A)   | 55059-5452-17K | 1        |
| COWLING,SIDE,RR,LH,M.G.GRY+GRN (Ref # 55059B) | 55059-5482-62Z | 1        |
| COWLING,SIDE,RR,RH,M.G.GRY+GRN (Ref # 55059C) | 55059-5483-62Z | 1        |
| NUT,WELL,5MM (Ref # 92015)                    | 92015-1757     | 9        |
| BOLT,SOCKET,6MM (Ref # 92153)                 | 92153-0489     | 2        |
| BOLT,SOCKET,5X16 (Ref # 92154)                | 92154-0209     | 12       |
| BOLT,SOCKET,5X45 (Ref # 92154A)               | 92154-2934     | 2        |
| SCREW,TAPPING,5X16 (Ref # 92172)              | 92172-0238     | 12       |
| WASHER,10.4X15.9X0.5 (Ref # 92200)            | 92200-0157     | 2        |
| WASHER,5.2X10X1.0 (Ref # 92200A)              | 92200-1820     | 14       |
| NUT,5MM (Ref # 92210)                         | 92210-0001     | 2        |