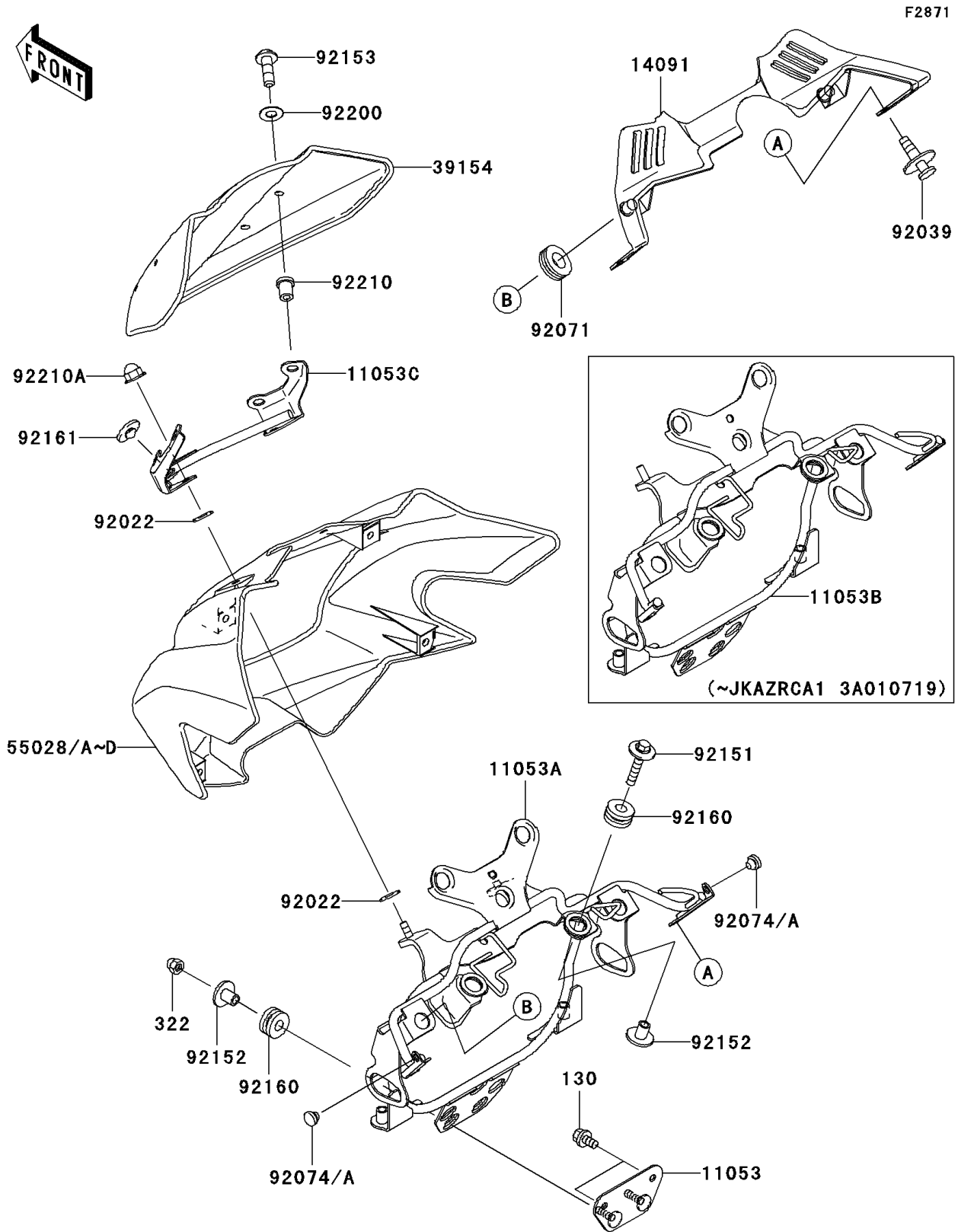


# 2003 Z1000 PARTS DIAGRAM

Cowling(A1/A2)



## 2003 Z1000 PARTS LIST

Cowling(A1/A2)

ITEM NAME	PART NUMBER	QUANTITY
BOLT-FLANGED (Ref # 130)	130J0610	2
NUT-CAP,6MM,BLACK (Ref # 322)	322C0600	2
BRACKET (Ref # 11053)	11053-0146	1
BRACKET,UPP COWLING&METER (Ref # 11053A)	11053-0433	1
BRACKET,UPP COWLING&METER (Ref # 11053B)	11053-1152	1
BRACKET,WINDSHIELD (Ref # 11053C)	11053-1161	1
COVER,COWLING,INNER (Ref # 14091)	14091-1549	1
WINDSHIELD (Ref # 39154)	39154-1160	1
COWLING,UPP,BLACK (Ref # 55028)	55028-1459-B5	1
COWLING,UPP,P.B.ORANGE (Ref # 55028B)	55028-1459-470	1
WASHER,6.5X16X1 (Ref # 92022)	92022-1143	4
RIVET (Ref # 92039)	92039-1227	2
GROMMET (Ref # 92071)	92071-3737	2
PLUG,7X2 (Ref # 92074A)	92074-028	2
BOLT,FLANGED,6X30 (Ref # 92151)	92151-1105	2
COLLAR (Ref # 92152)	92152-0048	4
BOLT,SOCKET,5X18 (Ref # 92153)	92153-0370	4
DAMPER (Ref # 92160)	92160-1162	4
DAMPER,RUBBER (Ref # 92161)	92161-1200	1
WASHER,NYLON,5.3X11.5X0.5 (Ref # 92200)	92200-1480	4
NUT,5MM (Ref # 92210)	92210-0001	4
NUT,CAP,6MM (Ref # 92210A)	92210-0003	2
COWLING,UPP,L.GREEN (Ref # 55028D)	55028-1459-7F	1