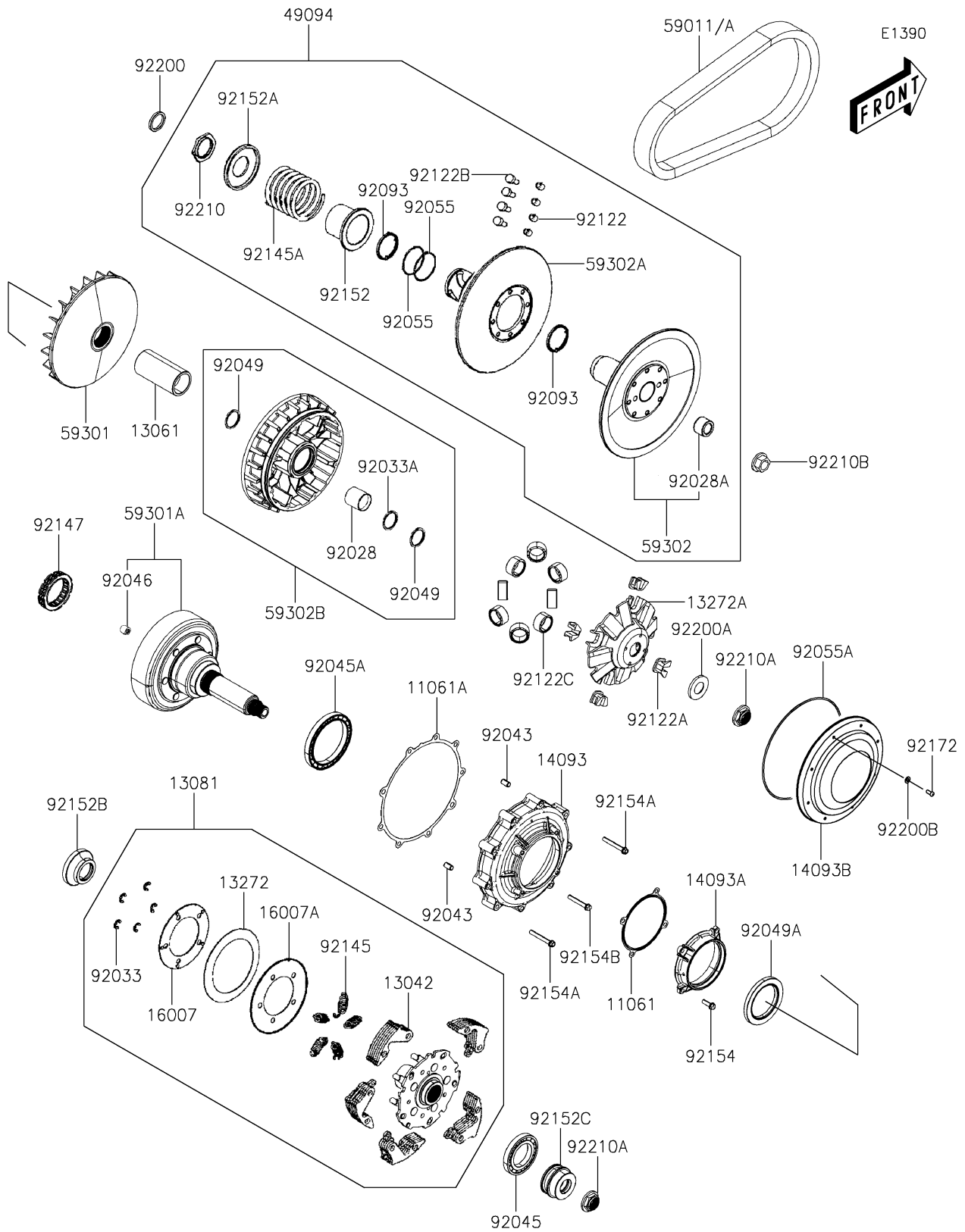


2021 MULE PRO-MX™ EPS LE PARTS DIAGRAM

Belt Converter



2021 MULE PRO-MX™ EPS LE PARTS LIST

Belt Converter

| ITEM NAME | PART NUMBER | QUANTITY |
|---|-------------|----------|
| GASKET,PRIMARY SHAFT COVER (Ref # 11061) | 11061-Y059 | 1 |
| GASKET,CLUTCH COVER (Ref # 11061A) | 11061-Y060 | 1 |
| WEIGHT,CLUTCH (Ref # 13042) | 13042-Y008 | 5 |
| BOSS,DRIVE FACE (Ref # 13061) | 13061-Y004 | 1 |
| CLUTCH-ASSY,PRIMARY (Ref # 13081) | 13081-Y001 | 1 |
| PLATE,ADJUSTER SPRING (Ref # 13272) | 13272-Y027 | 1 |
| PLATE,RAMP (Ref # 13272A) | 13272-Y028 | 1 |
| COVER,CLUTCH (Ref # 14093) | 14093-Y004 | 1 |
| COVER,PRIMARY SHAFT (Ref # 14093A) | 14093-Y005 | 1 |
| COVER,MOVABLE (Ref # 14093B) | 14093-Y050 | 1 |
| SEAT-SPRING (Ref # 16007) | 16007-Y007 | 1 |
| SEAT-SPRING (Ref # 16007A) | 16007-Y008 | 1 |
| CONVERTER-ASSY-DRIVEN (Ref # 49094) | 49094-Y007 | 1 |
| BELT,DRIVE(STD) (Ref # 59011) | 59011-Y006 | 1 |
| BELT,DRIVE(OPTION) (Ref # 59011A) | 59011-Y010 | 1 |
| SHEAVE-MOVABLE (Ref # 59301) | 59301-Y006 | 1 |
| SHEAVE-MOVABLE,PRIMARY DRIVE (Ref # 59301A) | 59301-Y007 | 1 |
| SHEAVE-COMP,MOVABLE (Ref # 59302) | 59302-Y017 | 1 |
| SHEAVE-COMP (Ref # 59302A) | 59302-Y018 | 1 |
| SHEAVE-COMP,MOVABLE (Ref # 59302B) | 59302-Y020 | 1 |
| BUSHING,42X47X45.6 (Ref # 92028) | 92028-Y002 | 1 |
| BUSHING (Ref # 92028A) | 92028-Y003 | 1 |
| RING-SNAP,7MM (Ref # 92033) | 92033-Y042 | 5 |
| RING-SNAP,46.5MM (Ref # 92033A) | 92033-Y043 | 1 |
| PIN,8X14 (Ref # 92043) | 92043-Y012 | 2 |
| BEARING-BALL,16008 (Ref # 92045) | 92045-Y046 | 1 |
| BEARING-BALL,6815 (Ref # 92045A) | 92045-Y052 | 1 |
| BEARING-NEEDLE,14X22X20 (Ref # 92046) | 92046-Y010 | 1 |
| SEAL-OIL,42X51X4 (Ref # 92049) | 92049-Y043 | 2 |

2021 MULE PRO-MX™ EPS LE PARTS LIST

Belt Converter

| ITEM NAME | PART NUMBER | QUANTITY |
|---|-------------|----------|
| SEAL-OIL,6.5X80X7 (Ref # 92049A) | 92049-Y047 | 1 |
| RING-O (Ref # 92055) | 92055-Y065 | 2 |
| RING-O,166X2.0 (Ref # 92055A) | 92055-Y072 | 1 |
| SEAL,DRIVEN FACE,40.2X47X4 (Ref # 92093) | 92093-Y045 | 2 |
| ROLLER,GUIDE (Ref # 92122) | 92122-Y008 | 4 |
| ROLLER (Ref # 92122A) | 92122-Y018 | 4 |
| ROLLER,GUIDE (Ref # 92122B) | 92122-Y020 | 4 |
| ROLLER,COMP,WEIGHT (Ref # 92122C) | 92122-Y022 | 8 |
| SPRING,CLUTCH (Ref # 92145) | 92145-Y058 | 5 |
| SPRING,DRIVEN FACE (Ref # 92145A) | 92145-Y059 | 1 |
| BEARING,ONE WAY (Ref # 92147) | 92147-Y001 | 1 |
| COLLAR,SEAL (Ref # 92152) | 92152-Y058 | 1 |
| COLLAR,SPRING (Ref # 92152A) | 92152-Y059 | 1 |
| COLLAR,CLUTCH (Ref # 92152B) | 92152-Y069 | 1 |
| COLLAR,PRIMARY DRIVE SHAFT (Ref # 92152C) | 92152-Y070 | 1 |
| BOLT,FLANGE,6X18 (Ref # 92154) | 92154-Y132 | 4 |
| BOLT,FLANGE,6X45 (Ref # 92154A) | 92154-Y135 | 2 |
| BOLT,FLANGE,6X40 (Ref # 92154B) | 92154-Y209 | 7 |
| SCREW,4X12 (Ref # 92172) | 92172-Y088 | 8 |
| WASHER,25X33X4 (Ref # 92200) | 92200-Y073 | 1 |
| WASHER,THRUST,20MM (Ref # 92200A) | 92200-Y087 | 1 |
| WASHER (Ref # 92200B) | 92200-Y103 | 8 |
| NUT,SPECIAL,36MM (Ref # 92210) | 92210-Y082 | 1 |
| NUT,FLANGE,20MM (Ref # 92210A) | 92210-Y084 | 2 |
| NUT (Ref # 92210B) | 92210-Y085 | 1 |