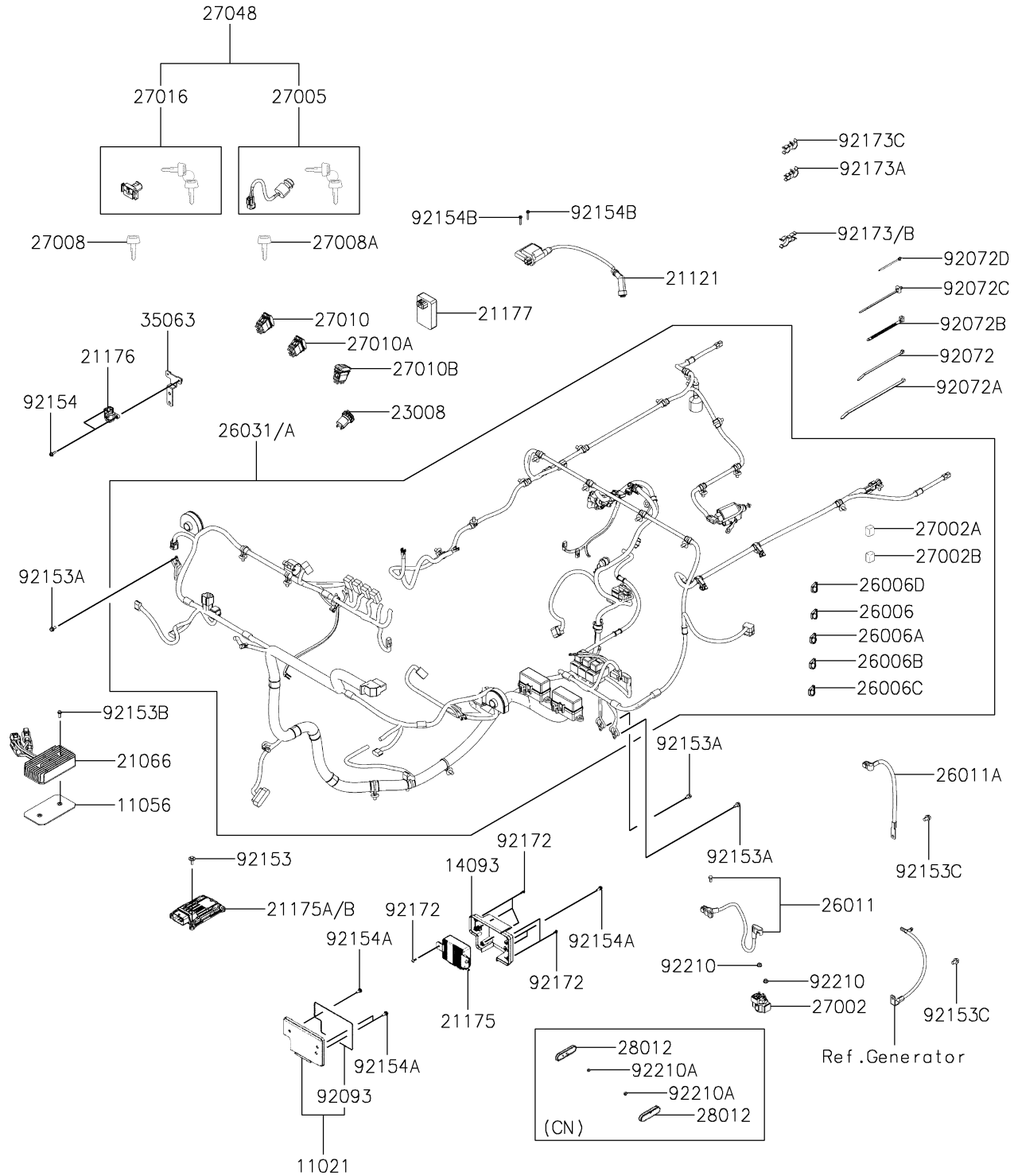


2021 MULE PRO-MX™ EPS CAMO PARTS DIAGRAM

Chassis Electrical Equipment

F2760



2021 MULE PRO-MX™ EPS CAMO PARTS LIST

Chassis Electrical Equipment

ITEM NAME	PART NUMBER	QUANTITY
CASE-ASSY, EPS ECU (Ref # 11021)	11021-Y003	1
BRACKET, REGULATOR (Ref # 11056)	11056-Y016	1
COVER, EPS ECU (Ref # 14093)	14093-Y042	1
REGULATOR-VOLTAGE (Ref # 21066)	21066-Y004	1
COIL-IGNITION (Ref # 21121)	21121-Y002	1
CONTROL UNIT-ELECTRONIC (Ref # 21175)	21175-1403	1
CONTROL UNIT-ELECTRONIC (Ref # 21175A)	21175-Y008	1
CONTROL UNIT-ELECTRONIC (Ref # 21175B)	21175-Y009	1
SENSOR, VEHICLE-DOWN (Ref # 21176)	21176-Y008	1
CONTROLLER, DIFF SOLENOID (Ref # 21177)	21177-Y004	1
SOCKET-ASSY, DC12V (Ref # 23008)	23008-Y006	1
FUSE, 10A (Ref # 26006)	26006-Y007	5
FUSE, 20A (Ref # 26006A)	26006-Y008	3
FUSE, 30A (Ref # 26006B)	26006-Y009	2
FUSE, 40A (Ref # 26006C)	26006-Y010	2
FUSE, 60A (Ref # 26006D)	26006-Y011	2
WIRE-LEAD, BATTERY (Ref # 26011)	26011-Y011	1
WIRE-LEAD, BATTERY, EARTH (Ref # 26011A)	26011-Y012	1
HARNESS, MAIN (Ref # 26031)	26031-Y021	1
HARNESS, MAIN (Ref # 26031A)	26031-Y022	1
RELAY-ASSY, START (Ref # 27002)	27002-Y009	1
RELAY-ASSY (Ref # 27002A)	27002-Y010	2
RELAY-ASSY (Ref # 27002B)	27002-Y012	9
SWITCH-ASSY-IGNITION (Ref # 27005)	27005-Y006	1
KEY-LOCK, BLANK, RH CUTTING (Ref # 27008)	27008-Y008	1
KEY-LOCK, BLANK, LH CUTTING (Ref # 27008A)	27008-Y009	1
SWITCH, HEAD LAMP (Ref # 27010)	27010-0750	1
SWITCH, 2WD/4WD (Ref # 27010A)	27010-0751	1
SWITCH, DIFF LOCK (Ref # 27010B)	27010-0912	1

2021 MULE PRO-MX™ EPS CAMO PARTS LIST

Chassis Electrical Equipment

ITEM NAME	PART NUMBER	QUANTITY
LOCK-ASSY,INNER BOX (Ref # 27016)	27016-Y003	1
SWITCH-ASSY (Ref # 27048)	27048-Y001	1
REFLECTOR-REFLEX (Ref # 28012)	28012-Y005	2
STAY (Ref # 35063)	35063-Y038	1
BAND (Ref # 92072)	92072-Y003	2
BAND (Ref # 92072A)	92072-Y011	4
BAND (Ref # 92072B)	92072-Y017	4
BAND (Ref # 92072C)	92072-Y020	38
BAND (Ref # 92072D)	92072-Y021	3
SEAL (Ref # 92093)	92093-Y046	1
BOLT,6X20 (Ref # 92153)	92153-Y019	4
BOLT,FLANGE,6X12 (Ref # 92153A)	92153-Y023	3
BOLT,FLANGE,6X16 (Ref # 92153B)	92153-Y025	2
BOLT,FLANGE,8X12 (Ref # 92153C)	92153-Y031	2
BOLT,5X16 (Ref # 92154)	92154-Y085	2
BOLT,6X18 (Ref # 92154A)	92154-Y177	5
BOLT,4X25 (Ref # 92154B)	92154-Y190	2
SCREW,TAPPING,5X16 (Ref # 92172)	92172-Y020	6
CLAMP,D23-D18 (Ref # 92173)	92173-Y044	1
CLAMP,D18-D11 (Ref # 92173A)	92173-Y046	1
CLAMP,D11-D8 (Ref # 92173B)	92173-Y047	1
CLAMP (Ref # 92173C)	92173-Y077	1
NUT,6MM (Ref # 92210)	92210-Y027	2
NUT,FLANGE,5MM (Ref # 92210A)	92210-Y053	2