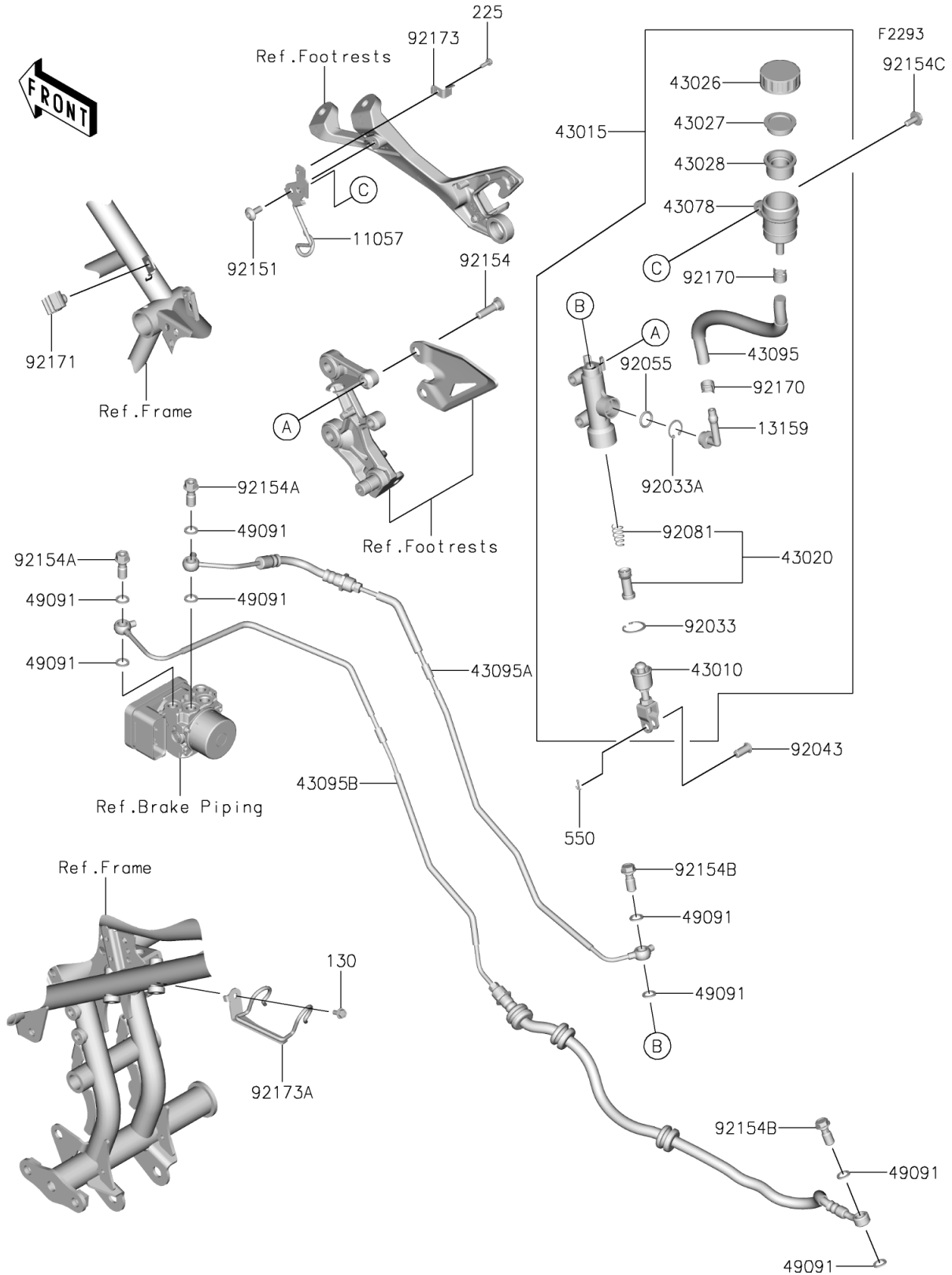


2024 NINJA® e-1 ABS PARTS DIAGRAM

Rear Master Cylinder



2024 NINJA® e-1 ABS PARTS LIST

Rear Master Cylinder

| ITEM NAME | PART NUMBER | QUANTITY |
|--|-------------|----------|
| BRACKET,RR RESERVOIR (Ref # 11057) | 11057-1101 | 1 |
| CONNECTOR (Ref # 13159) | 13159-1056 | 1 |
| ROD-ASSY-BRAKE (Ref # 43010) | 43010-0022 | 1 |
| CYLINDER-ASSY-MASTER,RR (Ref # 43015) | 43015-0667 | 1 |
| PISTON-COMP-BRAKE (Ref # 43020) | 43020-0023 | 1 |
| CAP-BRAKE (Ref # 43026) | 43026-0009 | 1 |
| PLATE-DIAPHRAGM (Ref # 43027) | 43027-1053 | 1 |
| DIAPHRAGM (Ref # 43028) | 43028-1065 | 1 |
| RESERVOIR (Ref # 43078) | 43078-0040 | 1 |
| HOSE-BRAKE,RR RESERVOIR (Ref # 43095) | 43095-1495 | 1 |
| HOSE-BRAKE,HU-RR M/CYLINDER (Ref # 43095A) | 43095-1915 | 1 |
| HOSE-BRAKE,HU-RR CALIPER (Ref # 43095B) | 43095-1916 | 1 |
| WASHER-SEAL,10.1X14.5X1.5 (Ref # 49091) | 49091-0001 | 8 |
| RING-SNAP,20.9X24.6X1.2 (Ref # 92033) | 92033-0079 | 1 |
| RING-SNAP,20.5MM (Ref # 92033A) | 92033-1186 | 1 |
| PIN (Ref # 92043) | 92043-0904 | 1 |
| RING-O,14.8X2.4 (Ref # 92055) | 92055-0741 | 1 |
| SPRING,MASTER CYLINDER (Ref # 92081) | 92081-1737 | 1 |
| BOLT,SOCKET,6X14 (Ref # 92151) | 92151-1654 | 1 |
| BOLT,SOCKET,8X30 (Ref # 92154) | 92154-0843 | 2 |
| BOLT,BANJO,10X22 (Ref # 92154A) | 92154-1138 | 2 |
| BOLT,BANJO,10X23 (Ref # 92154B) | 92154-1712 | 2 |
| BOLT,UPSET-WP,6X16 (Ref # 92154C) | 92154-2244 | 1 |
| CLAMP,HOSE (Ref # 92170) | 92170-1091 | 2 |
| CLAMP (Ref # 92171) | 92171-0818 | 1 |
| CLAMP,RESERVOIR TANK CAP (Ref # 92173) | 92173-0028 | 1 |
| CLAMP (Ref # 92173A) | 92173-2766 | 1 |
| BOLT-FLANGED,5X10 (Ref # 130) | 130BA0510 | 1 |
| SCREW-PAN-WSP-CROS,4X12 (Ref # 225) | 225AB0412 | 1 |

2024 NINJA® e-1 ABS PARTS LIST

Rear Master Cylinder

| ITEM NAME | PART NUMBER | QUANTITY |
|-------------------------------|-------------|----------|
| PIN-COTTER,2.0X15 (Ref # 550) | 550AA2015 | 1 |