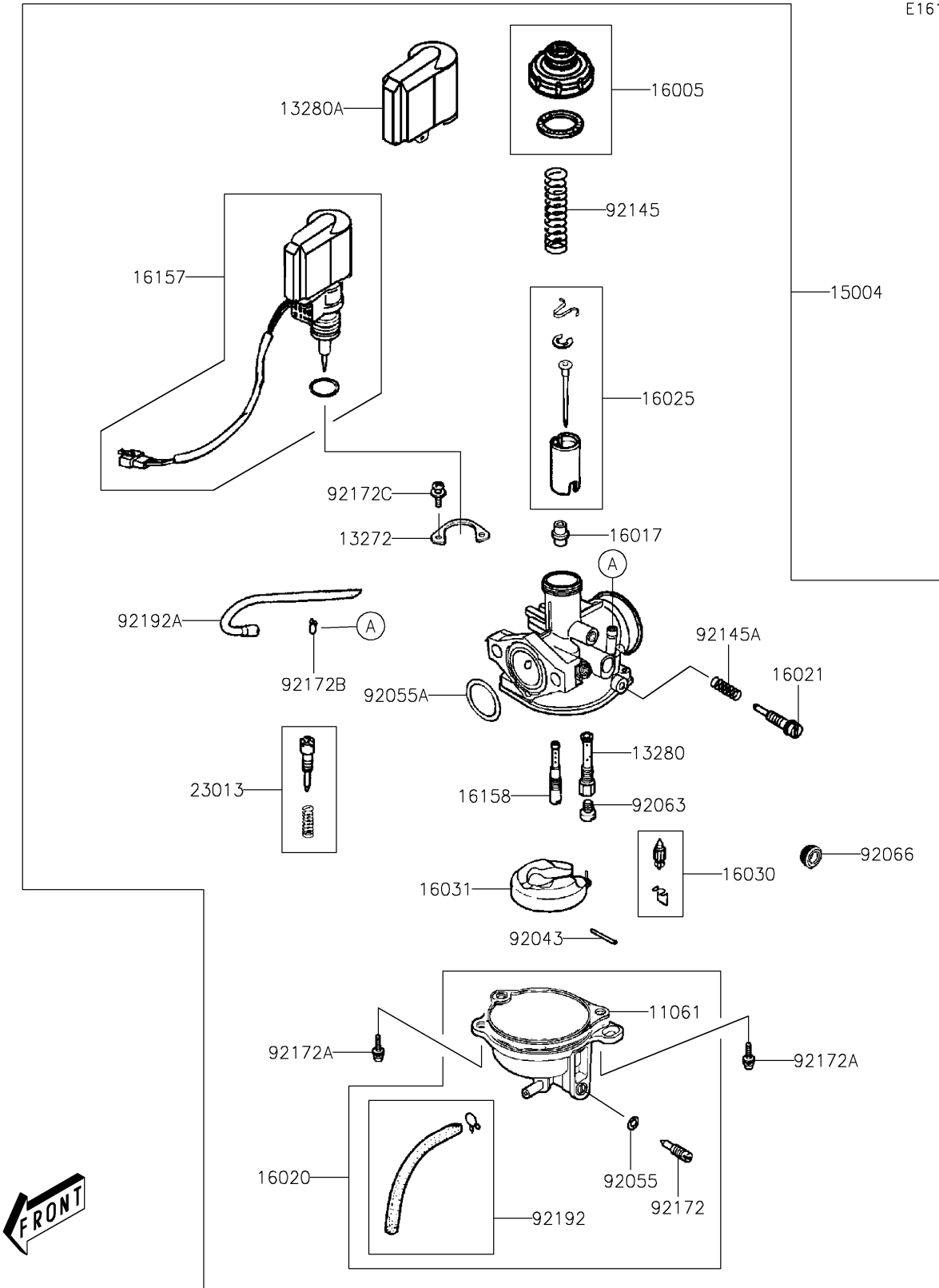


# 2023 KFX® 50 PARTS DIAGRAM

Carburetor

E1611



## 2023 KFX® 50 PARTS LIST

### Carburetor

| ITEM NAME                          | PART NUMBER | QUANTITY |
|------------------------------------|-------------|----------|
| GASKET,FLOAT CHAMBER (Ref # 11061) | 11061-Y021  | 1        |
| PLATE (Ref # 13272)                | 13272-Y011  | 1        |
| HOLDER,NEEDLE JET (Ref # 13280)    | 13280-Y007  | 1        |
| HOLDER,CAP (Ref # 13280A)          | 13280-Y008  | 1        |
| CARBURETOR-ASSY (Ref # 15004)      | 15004-Y006  | 1        |
| TOP-CHAMBER (Ref # 16005)          | 16005-Y001  | 1        |
| JET-NEEDLE (Ref # 16017)           | 16017-Y001  | 1        |
| CHAMBER-FLOAT (Ref # 16020)        | 16020-Y001  | 1        |
| SCREW-THROTTLE STOP (Ref # 16021)  | 16021-Y001  | 1        |
| VALVE-THROTTLE (Ref # 16025)       | 16025-Y005  | 1        |
| VALVE-FLOAT,ASSY (Ref # 16030)     | 16030-Y002  | 1        |
| FLOAT (Ref # 16031)                | 16031-Y001  | 1        |
| JET-STARTER (Ref # 16157)          | 16157-Y001  | 1        |
| JET-SLOW (Ref # 16158)             | 16158-Y001  | 1        |
| SCREW-ASSY,ADJUST (Ref # 23013)    | 23013-Y001  | 1        |
| PIN (Ref # 92043)                  | 92043-Y002  | 1        |
| RING-O (Ref # 92055)               | 92055-Y001  | 1        |
| RING-O (Ref # 92055A)              | 92055-Y016  | 1        |
| JET-MAIN (Ref # 92063)             | 92063-Y002  | 1        |
| PLUG (Ref # 92066)                 | 92066-Y008  | 1        |
| SPRING (Ref # 92145)               | 92145-Y002  | 1        |
| SPRING (Ref # 92145A)              | 92145-Y004  | 1        |
| SCREW,DRAIN (Ref # 92172)          | 92172-Y001  | 1        |
| SCREW (Ref # 92172A)               | 92172-Y013  | 2        |
| CLAMP (Ref # 92172B)               | 92172-Y023  | 1        |
| SCREW,4X8 (Ref # 92172C)           | 92172-Y065  | 2        |
| TUBE,ASSY (Ref # 92192)            | 92192-Y006  | 1        |
| TUBE (Ref # 92192A)                | 92192-Y011  | 1        |