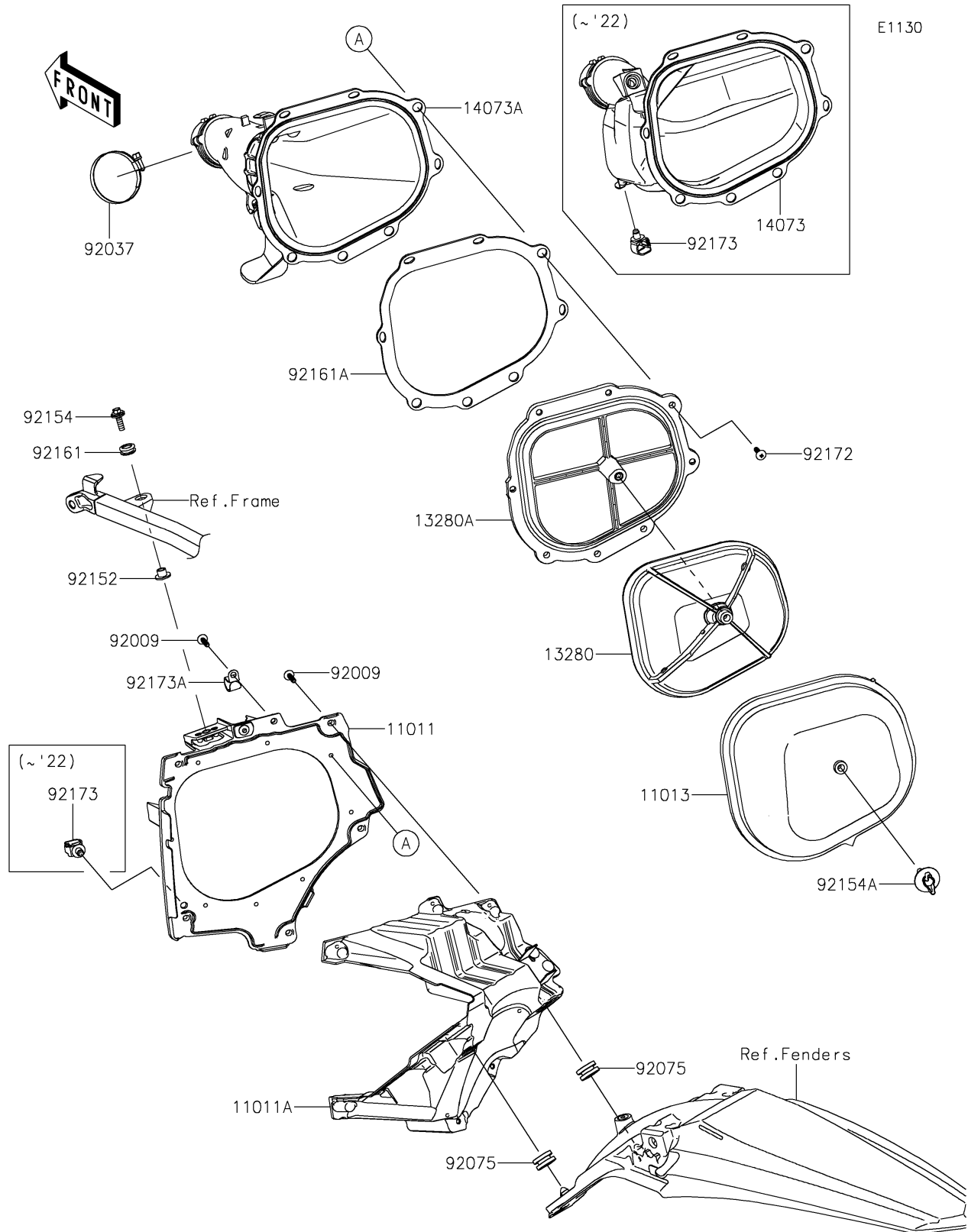


# 2023 KX™ 250 PARTS DIAGRAM

Air Cleaner



## 2023 KX™ 250 PARTS LIST

### Air Cleaner

| ITEM NAME                                 | PART NUMBER    | QUANTITY |
|---|----------------|----------|
| CASE-AIR FILTER,FR,L.GREEN (Ref # 11011)  | 11011-0948-290 | 1        |
| CASE-AIR FILTER,RR,L.GREEN (Ref # 11011A) | 11011-0949-290 | 1        |
| ELEMENT-AIR FILTER (Ref # 11013)          | 11013-0811     | 1        |
| HOLDER,ELEMENT BASE (Ref # 13280)         | 13280-0913     | 1        |
| HOLDER,ELEMENT BASE (Ref # 13280A)        | 13280-0988     | 1        |
| DUCT (Ref # 14073)                        | 14073-1869     | 1        |
| DUCT (Ref # 14073A)                       | 14073-1877     | 1        |
| SCREW,TAPPING,5X20 (Ref # 92009)          | 92009-1993     | 6        |
| CLAMP,RESERVE TANK (Ref # 92037)          | 92037-1586     | 1        |
| DAMPER,10X24X12 (Ref # 92075)             | 92075-1690     | 2        |
| COLLAR (Ref # 92152)                      | 92152-1449     | 1        |
| BOLT,FLANGED,6X20 (Ref # 92154)           | 92154-1268     | 1        |
| BOLT,WING,6X35 (Ref # 92154A)             | 92154-2943     | 1        |
| DAMPER (Ref # 92161)                      | 92161-0266     | 1        |
| DAMPER,HOLDER (Ref # 92161A)              | 92161-2319     | 1        |
| SCREW,TAPPING,5X20 (Ref # 92172)          | 92172-0382     | 8        |
| CLAMP,12MM DIA. (Ref # 92173)             | 92173-0736     | 2        |
| CLAMP (Ref # 92173A)                      | 92173-1549     | 1        |