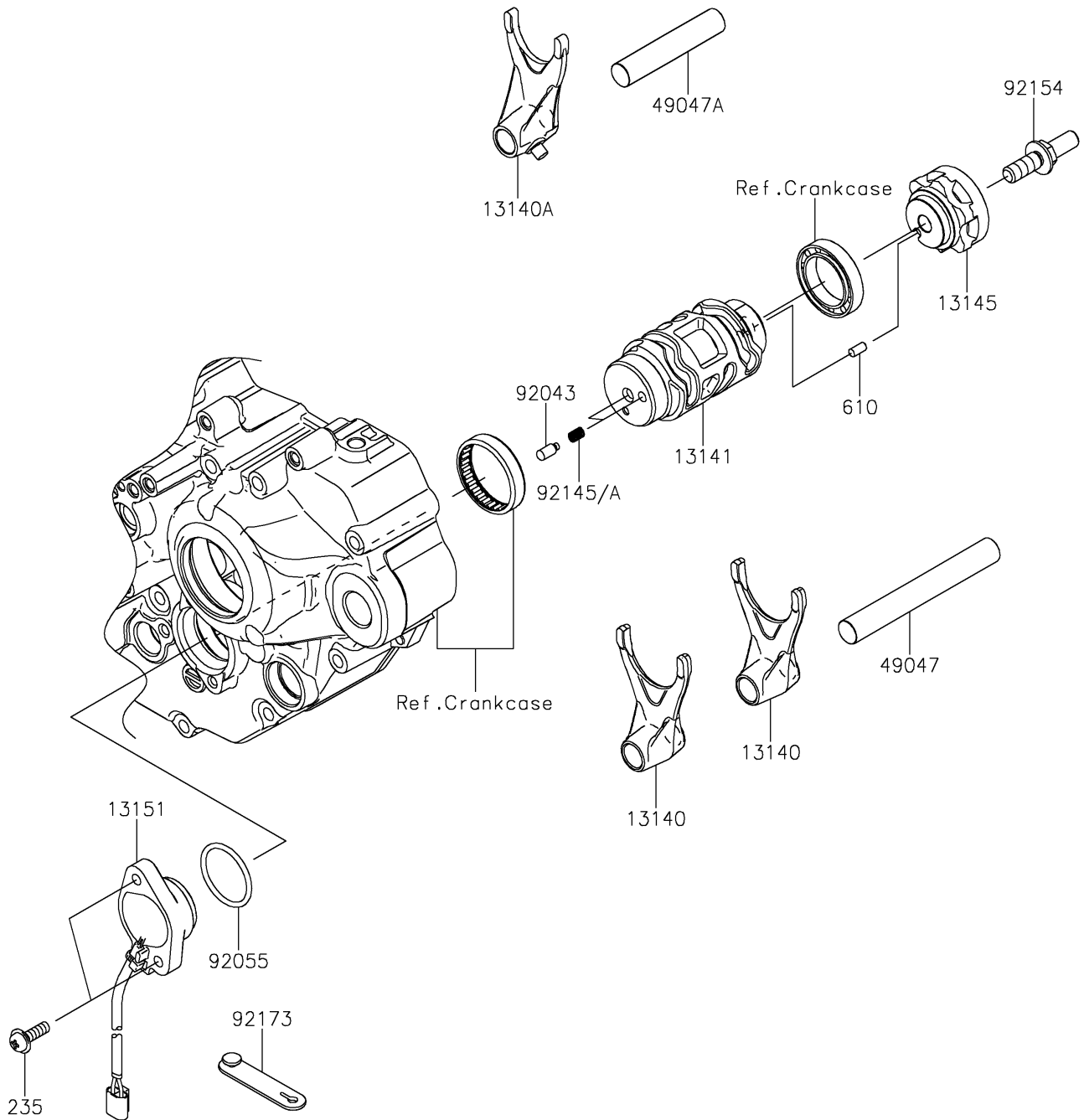


2024 KX™ 250 50th ANNIVERSARY EDITION PARTS DIAGRAM

Gear Change Drum/Shift Fork(s)

E1362



2024 KX™ 250 50th ANNIVERSARY EDITION PARTS LIST

Gear Change Drum/Shift Fork(s)

| ITEM NAME | PART NUMBER | QUANTITY |
|---|-------------|----------|
| FORK-SHIFT,OUTPUT (Ref # 13140) | 13140-0689 | 2 |
| FORK-SHIFT,INPUT (Ref # 13140A) | 13140-0690 | 1 |
| DRUM-CHANGE (Ref # 13141) | 13141-0612 | 1 |
| CAM-CHANGE DRUM (Ref # 13145) | 13145-0565 | 1 |
| SWITCH-COMP,GEAR POSITION (Ref # 13151) | 13151-0594 | 1 |
| ROD-SHIFT,OUTPUT,L=94.5 (Ref # 49047) | 49047-0620 | 1 |
| ROD-SHIFT,INPUT,L=63 (Ref # 49047A) | 49047-0621 | 1 |
| PIN (Ref # 92043) | 92043-1654 | 2 |
| RING-O,27.7X2.4 (Ref # 92055) | 92055-091 | 1 |
| SPRING (Ref # 92145A) | 92145-2256 | 2 |
| BOLT,8X20 (Ref # 92154) | 92154-4341 | 1 |
| CLAMP,RUBBER PLATE (Ref # 92173) | 92173-1229 | 1 |
| SCREW-PAN-WP-CROS,5X16 (Ref # 235) | 235AB0516 | 2 |
| ROLLER,4X8 (Ref # 610) | 610A0408 | 1 |