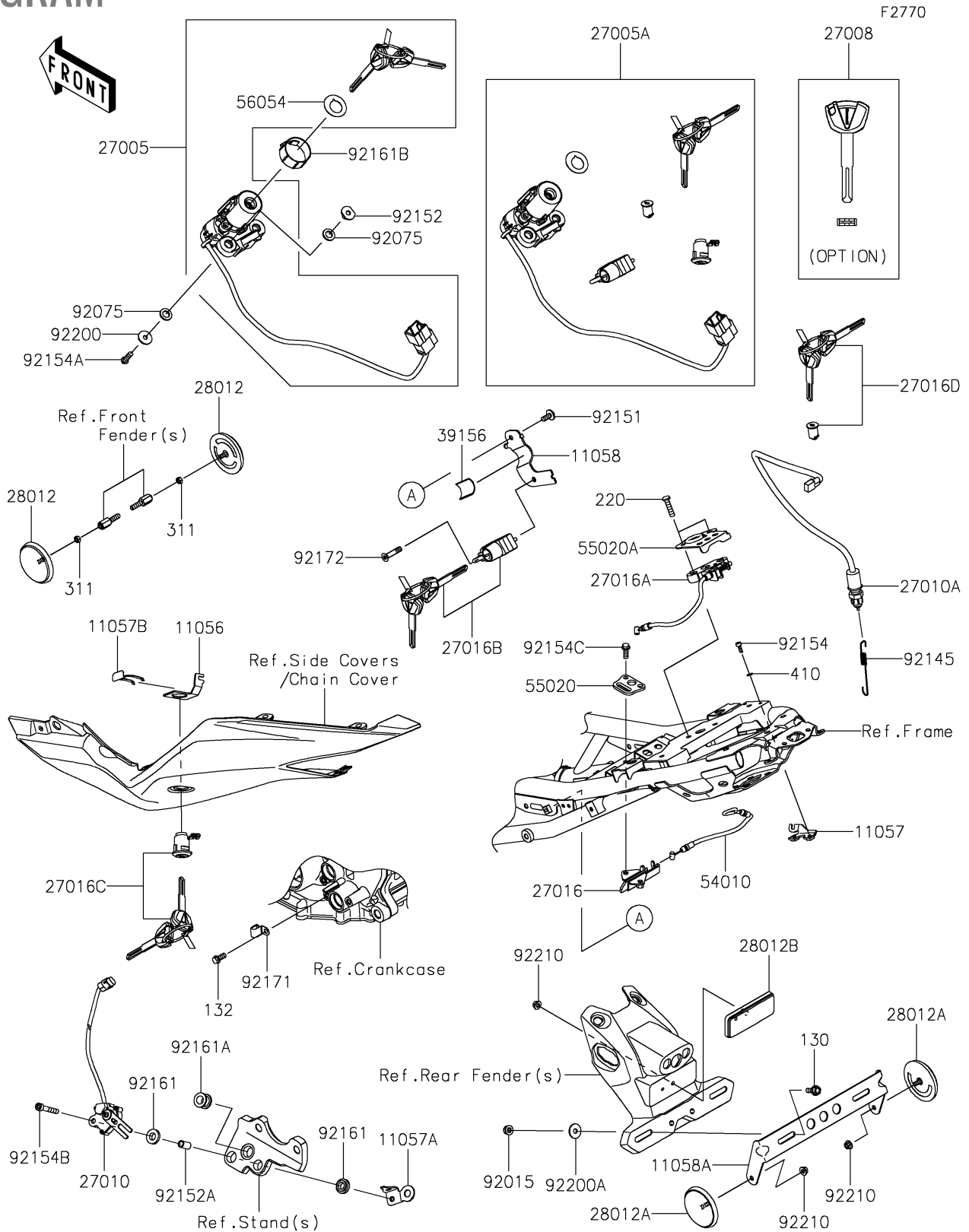


2024 NINJA® ZX™ -4RR 40th ANNIVERSARY EDITION ABS PARTS

Diagram of SV Rod/Locks/Reflectors



2024 NINJA® ZX™ -4RR 40th ANNIVERSARY EDITION ABS PARTS LIST

Ignition Switch/Locks/Reflectors

ITEM NAME	PART NUMBER	QUANTITY
BRACKET,SEAT LOCK (Ref # 11056)	11056-2119	1
BRACKET,SEAT LOCK CABLE (Ref # 11057)	11057-3928	1
BRACKET,SIDE STAND SWITCH (Ref # 11057A)	11057-7089	1
BRACKET,SEAT LOCK,UPP (Ref # 11057B)	11057-7740	1
BRACKET,HELMET-LOCK (Ref # 11058)	11058-0256	1
BRACKET,RR SIDE REFLECTOR (Ref # 11058A)	11058-0625	1
SWITCH-ASSY-IGNITION (Ref # 27005)	27005-0725	1
SWITCH-ASSY-IGNITION (Ref # 27005A)	27005-5197	1
KEY-LOCK,BLANK (Ref # 27008)	27008-0662	1
SWITCH,SIDE STAND (Ref # 27010)	27010-0097	1
SWITCH,STOP (Ref # 27010A)	27010-0863	1
LOCK-ASSY,SEAT STRIKER (Ref # 27016)	27016-0008	1
LOCK-ASSY,SEAT STRIKER (Ref # 27016A)	27016-0093	1
LOCK-ASSY,HELMET (Ref # 27016B)	27016-5423	1
LOCK-ASSY,SEAT (Ref # 27016C)	27016-5424	1
LOCK-ASSY,TANK CAP (Ref # 27016D)	27016-5425	1
REFLECTOR-REFLEX,FR,SIDE (Ref # 28012)	28012-0001	2
REFLECTOR-REFLEX (Ref # 28012A)	28012-0002	2
REFLECTOR-REFLEX (Ref # 28012B)	28012-1077	1
PAD,25X33X1 (Ref # 39156)	39156-2158	1
CABLE (Ref # 54010)	54010-0641	1
GUARD,SEAT STRIKER (Ref # 55020)	55020-2246	1
GUARD (Ref # 55020A)	55020-2404	1
MARK,IGNITION SWITCH (Ref # 56054)	56054-3854	1
NUT,FLANGED,6MM (Ref # 92015)	92015-1367	2
DAMPER (Ref # 92075)	92075-1564	4
SPRING,BRAKE LAMP SWITCH (Ref # 92145)	92145-0683	1
BOLT,SOCKET,6X14 (Ref # 92151)	92151-1654	1
COLLAR,6X9X10.6 (Ref # 92152)	92152-1971	2

2024 NINJA® ZX™ -4RR 40th ANNIVERSARY EDITION ABS PARTS LIST

Ignition Switch/Locks/Reflectors

ITEM NAME	PART NUMBER	QUANTITY
COLLAR,6.5X9.5X17 (Ref # 92152A)	92152-2274	1
BOLT,SOCKET,4X10 (Ref # 92154)	92154-0039	2
BOLT,TORX,6X20 (Ref # 92154A)	92154-0377	2
BOLT,SOCKET,6X40 (Ref # 92154B)	92154-0505	1
BOLT,FLANGED-SMALL,6X16,TB2468 (Ref # 92154C)	92154-3869	2
DAMPER (Ref # 92161)	92161-0117	2
DAMPER (Ref # 92161A)	92161-0118	1
DAMPER (Ref # 92161B)	92161-2336	1
CLAMP (Ref # 92171)	92171-0534	1
SCREW,HEXLOBE,6X30 (Ref # 92172)	92172-1378	1
WASHER,6X20X1.6 (Ref # 92200)	92200-0780	2
WASHER,6.5X20X1.6 (Ref # 92200A)	92200-1962	2
NUT,FLANGED,5MM (Ref # 92210)	92210-0007	3
BOLT-FLANGED,6X16 (Ref # 130)	130BA0616	2
BOLT-FLANGED-SMALL,6X14 (Ref # 132)	132BC0614	1
SCREW-PAN-CROS,6X25 (Ref # 220)	220AC0625	2
NUT-HEX,5MM (Ref # 311)	311AB0500	2
W-PLAIN-S,4MM (Ref # 410)	410AB0400	2