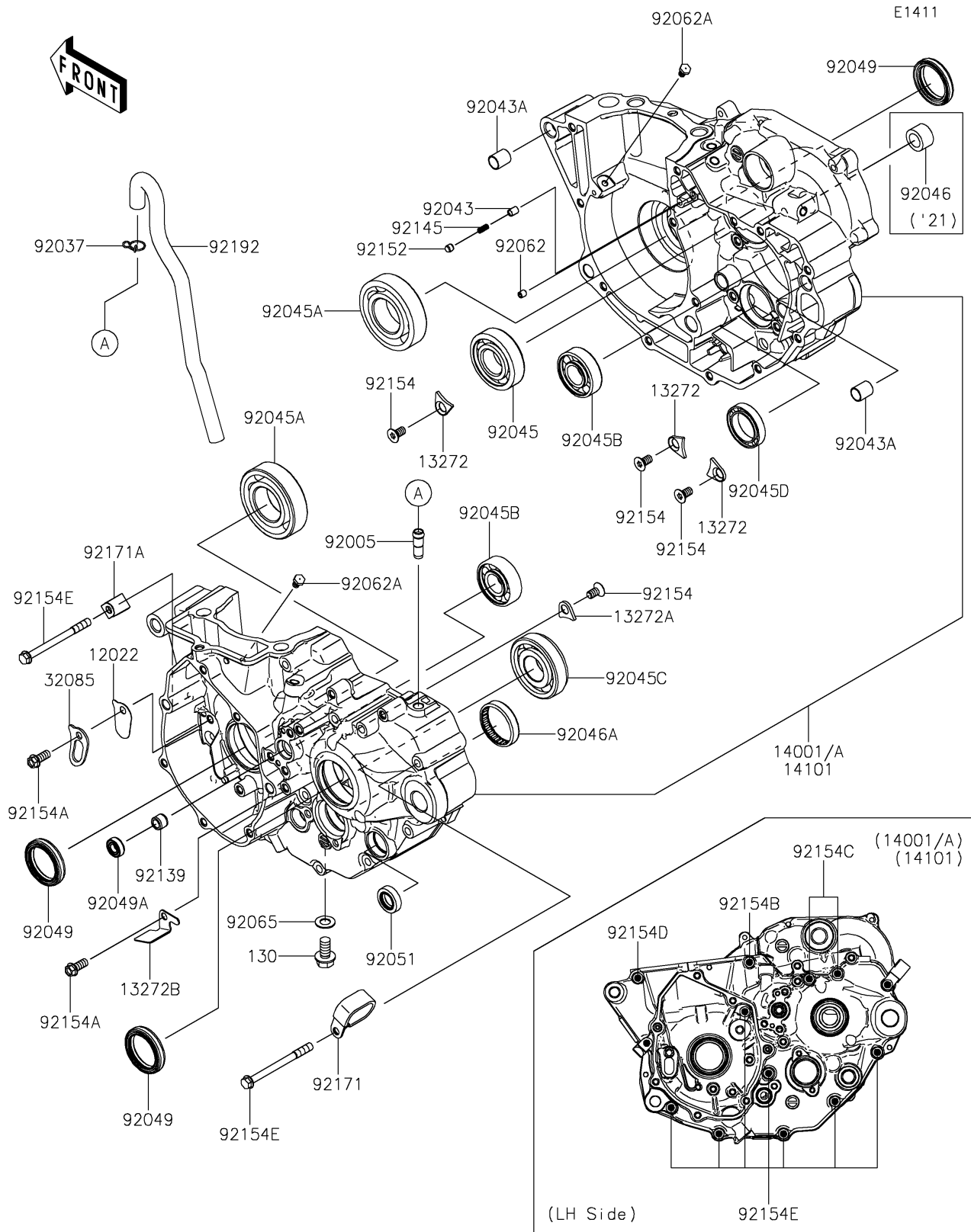


# 2022 KX™ 250X PARTS DIAGRAM

## Crankcase



## 2022 KX™ 250X PARTS LIST

### Crankcase

| ITEM NAME                                   | PART NUMBER | QUANTITY |
|---|-------------|----------|
| VALVE-REED (Ref # 12022)                    | 12022-0010  | 1        |
| PLATE (Ref # 13272)                         | 13272-0488  | 3        |
| PLATE (Ref # 13272A)                        | 13272-0670  | 1        |
| PLATE (Ref # 13272B)                        | 13272-3807  | 1        |
| SET-CRANKCASE (Ref # 14001)                 | 14001-0722  | 1        |
| STOPPER,VALVE-REED (Ref # 32085)            | 32085-0876  | 1        |
| FITTING (Ref # 92005)                       | 92005-1369  | 1        |
| CLAMP,TUBE (Ref # 92037)                    | 92037-1972  | 1        |
| PIN,PLUNGER (Ref # 92043)                   | 92043-1676  | 1        |
| PIN,10.1X12X14 (Ref # 92043A)               | 92043-4009  | 2        |
| BEARING-BALL,22X50X14 (Ref # 92045)         | 92045-0051  | 1        |
| BEARING-BALL,CRANKSHAFT MAIN (Ref # 92045A) | 92045-0827  | 2        |
| BEARING-BALL,TMB203LU (Ref # 92045B)        | 92045-1287  | 2        |
| BEARING-BALL,SX04A81C3 (Ref # 92045C)       | 92045-1335  | 1        |
| BEARING-BALL,6805JRZ (Ref # 92045D)         | 92045-1432  | 1        |
| BEARING-NEEDLE,NK12X19X12-15 (Ref # 92046)  | 92046-0642  | 1        |
| BEARING-NEEDLE,7E-HKS33X38X8 (Ref # 92046A) | 92046-1221  | 1        |
| SEAL-OIL,TC 30 40 7 (Ref # 92049)           | 92049-0030  | 3        |
| SEAL-OIL (Ref # 92049A)                     | 92049-0808  | 1        |
| SEAL-OIL,TB13225.5 (Ref # 92051)            | 92051-005   | 1        |
| NOZZLE (Ref # 92062)                        | 92062-0029  | 1        |
| NOZZLE (Ref # 92062A)                       | 92062-0576  | 2        |
| GASKET,8.5X16X1 (Ref # 92065)               | 92065-023   | 1        |
| BUSHING (Ref # 92139)                       | 92139-0907  | 1        |
| SPRING (Ref # 92145)                        | 92145-0453  | 1        |
| COLLAR (Ref # 92152)                        | 92152-2453  | 1        |
| BOLT,TORX (Ref # 92154)                     | 92154-1621  | 4        |
| BOLT,FLANGED,6X14 (Ref # 92154A)            | 92154-2964  | 2        |
| BOLT,FLANGED,6X65 (Ref # 92154B)            | 92154-2980  | 1        |

## 2022 KX™ 250X PARTS LIST

### Crankcase

| ITEM NAME                        | PART NUMBER | QUANTITY |
|----------------------------------|-------------|----------|
| BOLT,FLANGED,6X70 (Ref # 92154C) | 92154-2981  | 2        |
| BOLT,FLANGED,6X50 (Ref # 92154D) | 92154-4132  | 1        |
| BOLT,FLANGED,6X60 (Ref # 92154E) | 92154-4134  | 9        |
| CLAMP (Ref # 92171)              | 92171-0594  | 1        |
| CLAMP (Ref # 92171A)             | 92171-0761  | 1        |
| TUBE,BREATHER (Ref # 92192)      | 92192-1886  | 1        |
| BOLT-FLANGED,8X16 (Ref # 130)    | 130AA0816   | 1        |