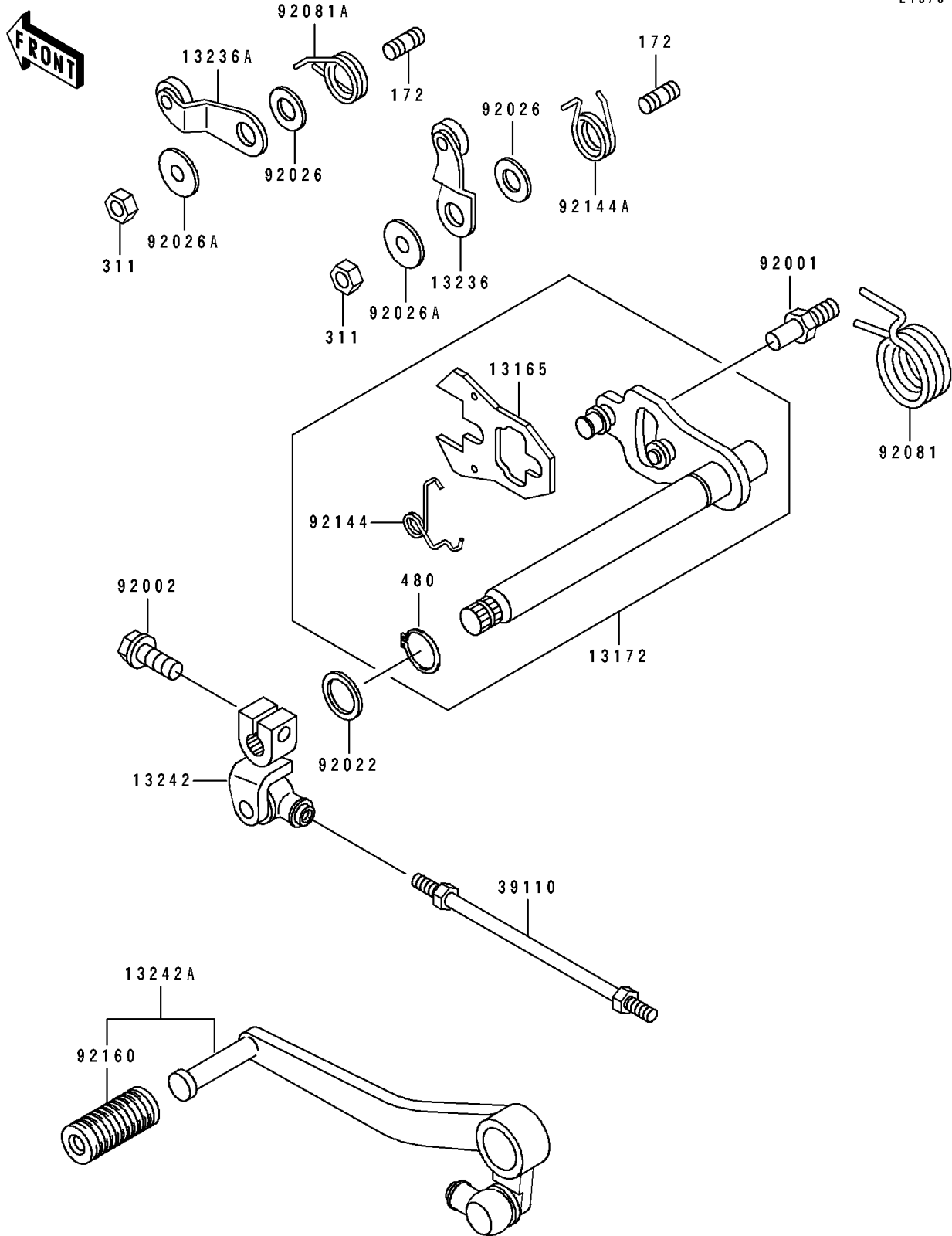


1993 ZR1100 Zephyr PARTS DIAGRAM

Gear Change Mechanism

E1370



1993 ZR1100 Zephyr PARTS LIST

Gear Change Mechanism

ITEM NAME	PART NUMBER	QUANTITY
PAWL (Ref # 13165)	13165-1120	1
SHAFT-ASSY-CHANGE (Ref # 13172)	13172-1073	1
LEVER-COMP,NEUTRAL POSITION (Ref # 13236)	13236-1143	1
LEVER-COMP,GEAR POSITION (Ref # 13236A)	13236-1144	1
LEVER-ASSY-CHANGE,LINK (Ref # 13242)	13242-1299	1
LEVER-ASSY-CHANGE,PEDAL (Ref # 13242A)	13242-1300	1
ROD-ASSY-TIE (Ref # 39110)	39110-1102	1
BOLT,RETURN SPRING (Ref # 92001)	92001-1455	1
BOLT,6X20 (Ref # 92002)	92002-1237	1
WASHER,13.3X18X1 (Ref # 92022)	92022-1772	1
SPACER,6.3X12X1.0 (Ref # 92026)	92026-094	2
SPACER (Ref # 92026A)	92026-1217	2
SPRING,CHANGE PEDAL RETURN (Ref # 92081)	92081-1869	1
SPRING,GEAR LEVER (Ref # 92081A)	92081-1942	1
SPRING (Ref # 92144)	92144-1029	1
SPRING,NEUTRAL LEVER (Ref # 92144A)	92144-1762	1
DAMPER,CHANGE PEDAL (Ref # 92160)	92160-1036	1
BOLT-STUD,6X12 (Ref # 172)	172G0612	2
NUT-HEX,6MM (Ref # 311)	311G0600	2
CIRCLIP-TYPE-C,13MM (Ref # 480)	480J1300	1