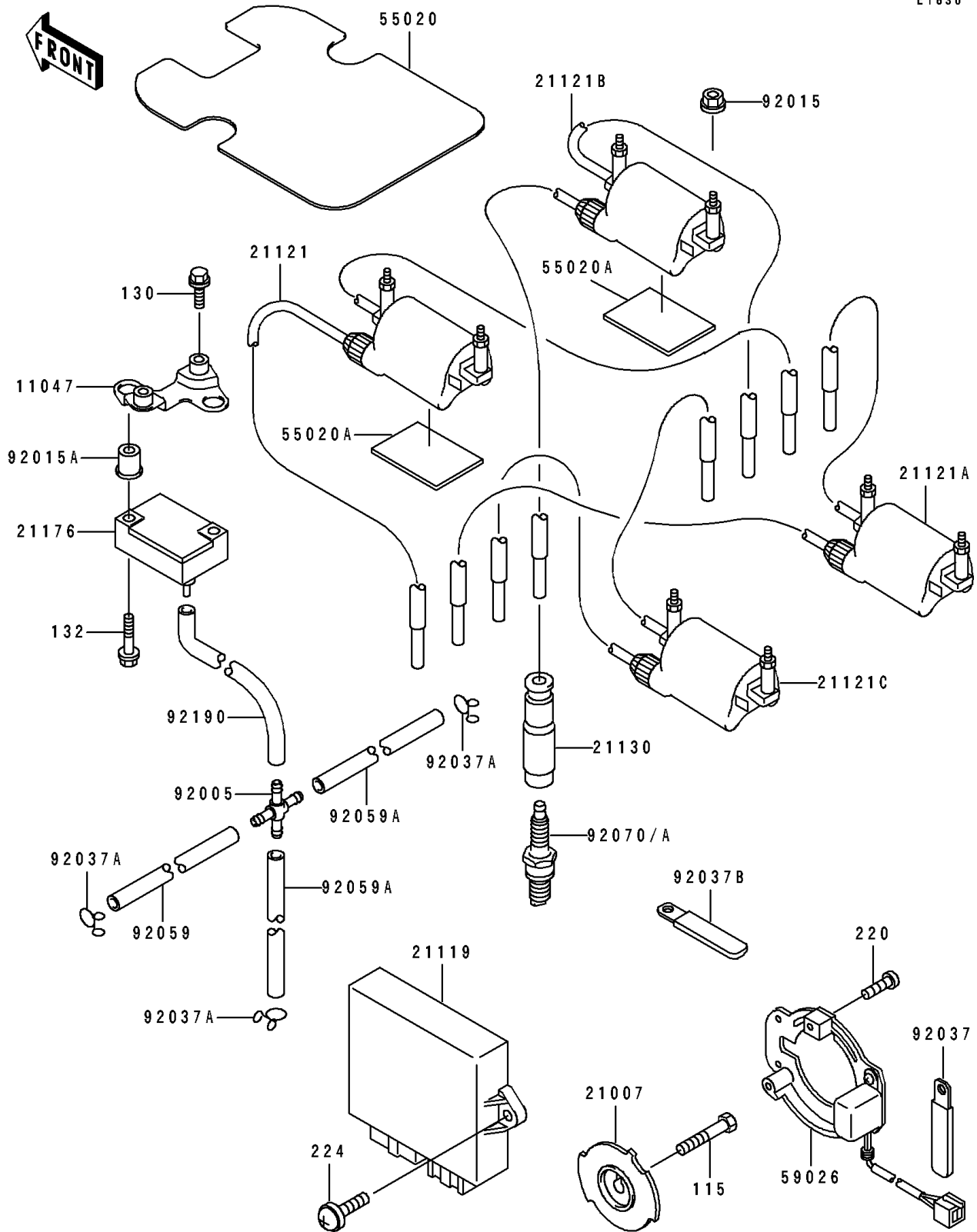


# 1995 ZR1100 Zephyr PARTS DIAGRAM

## Ignition System

E1830



# 1995 ZR1100 Zephyr PARTS LIST

## Ignition System

ITEM NAME	PART NUMBER	QUANTITY
BRACKET (Ref # 11047)	11047-1737	1
ROTOR,PULSING COIL (Ref # 21007)	21007-1246	1
IGNITER (Ref # 21119)	21119-1348	1
COIL-IGNITION,#1&#4,FR (Ref # 21121)	21121-1208	1
COIL-IGNITION,#1&#4,RR (Ref # 21121A)	21121-1209	1
COIL-IGNITION,#2&#3,FR (Ref # 21121B)	21121-1210	1
COIL-IGNITION,#2&#3,RR (Ref # 21121C)	21121-1211	1
CAP-SPARK PLUG (Ref # 21130)	21130-1071	8
SENSOR,BOOST (Ref # 21176)	21176-1066	1
GUARD,HEAT (Ref # 55020)	55020-1443	1
GUARD,HEAT (Ref # 55020A)	55020-1444	2
COIL-PULSING (Ref # 59026)	59026-1112	1
FITTING,TUBE,X-TYPE (Ref # 92005)	92005-1051	1
NUT,FLANGED,6MM (Ref # 92015)	92015-1193	8
NUT (Ref # 92015A)	92015-1700	2
CLAMP,WIRING HARNESS (Ref # 92037)	92037-1539	1
CLAMP (Ref # 92037A)	92037-1712	3
CLAMP (Ref # 92037B)	92037-1993	1
TUBE,4X9X155 (Ref # 92059)	92059-1033	1
TUBE,4X9X100 (Ref # 92059A)	92059-1058	2
PLUG-SPARK,CR9E(NGK) (Ref # 92070)	92070-1143	8
PLUG-SPARK,U27ESR-N(ND) (Ref # 92070A)		8
TUBE (Ref # 92190)	92190-1317	1
BOLT-SMALL-UPSET,8X30 (Ref # 115)	115G0830	1
BOLT-FLANGED,6X10,BLACK (Ref # 130)	130C0610	2
BOLT-FLANGED-SMALL (Ref # 132)	132J0635	2
SCREW-PAN-CROS,5X25 (Ref # 220)	220B0525	3
SCREW-PAN-WP-CROS (Ref # 224)	224B0616	2