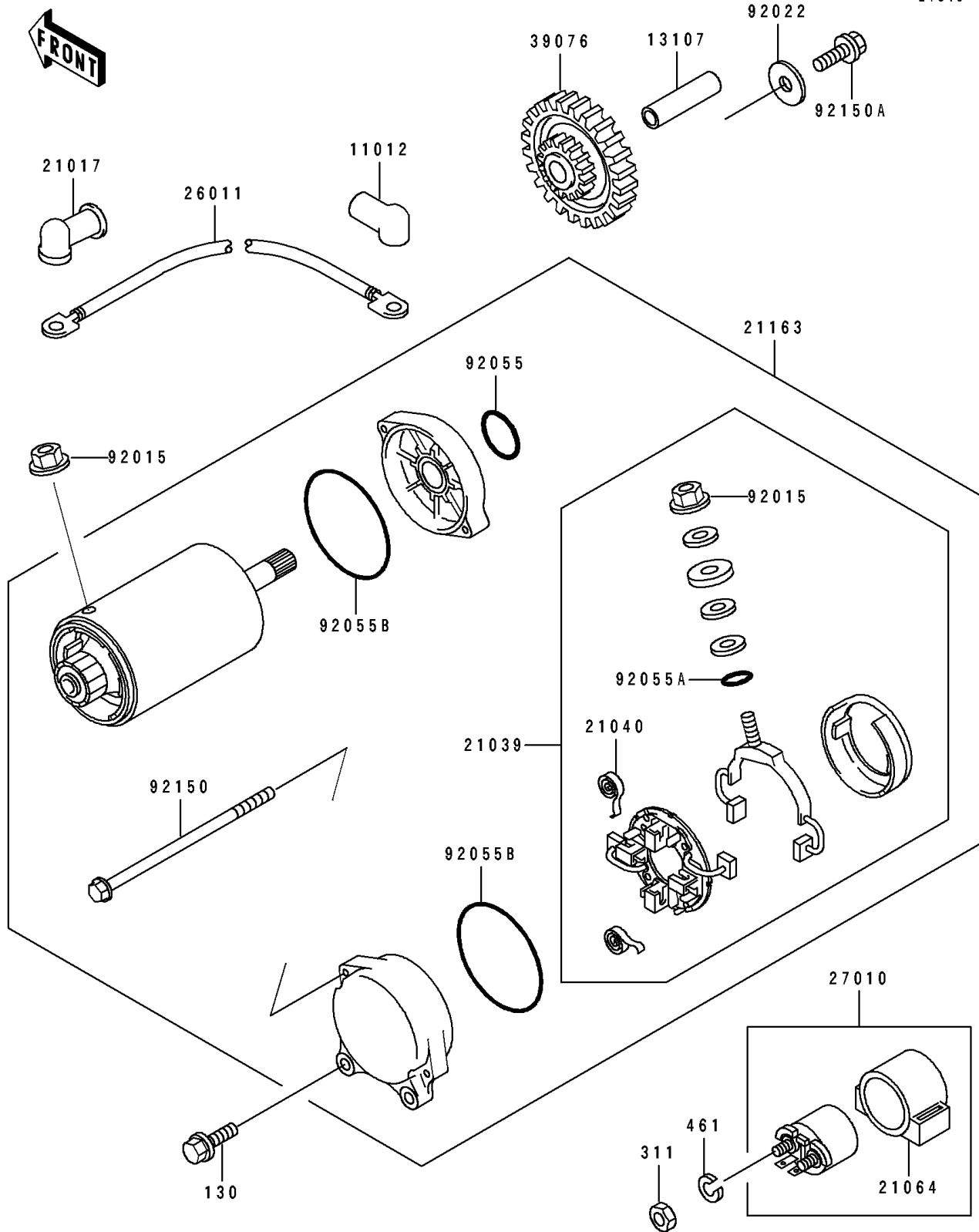


1994 ZR1100 Zephyr PARTS DIAGRAM

Starter Motor

E1840



1994 ZR1100 Zephyr PARTS LIST

Starter Motor

| ITEM NAME | PART NUMBER | QUANTITY |
|--|-------------|----------|
| CAP,TERMINAL (Ref # 11012) | 11012-1354 | 1 |
| SHAFT,IDLE GEAR (Ref # 13107) | 13107-1106 | 1 |
| GROMMET,STARTER TERMINAL (Ref # 21017) | 21017-017 | 1 |
| BRUSH,CARBON (Ref # 21039) | 21039-1060 | 1 |
| SPRING-BRUSH (Ref # 21040) | 21040-1055 | 4 |
| DAMPER,MAGNETIC SWITCH (Ref # 21064) | 21064-002 | 1 |
| STARTER-ELECTRIC (Ref # 21163) | 21163-1196 | 1 |
| WIRE-LEAD,MOTOR (Ref # 26011) | 26011-1542 | 1 |
| SWITCH,MAGNETIC (Ref # 27010) | 27010-1312 | 1 |
| LIMITER,STARTER IDLE (Ref # 39076) | 39076-1063 | 1 |
| NUT,STARTER MOTOR (Ref # 92015) | 92015-1476 | 2 |
| WASHER,6X19.5X2 (Ref # 92022) | 92022-1517 | 1 |
| RING-O (Ref # 92055) | 92055-1276 | 1 |
| RING-O,4.5X2.0 (Ref # 92055A) | 92055-1370 | 1 |
| RING-O,STARTER MOTOR (Ref # 92055B) | 92055-1381 | 2 |
| BOLT,STARTER MOTOR (Ref # 92150) | 92150-1572 | 2 |
| BOLT,6X12 (Ref # 92150A) | 92150-1826 | 1 |
| BOLT-FLANGED,6X25 (Ref # 130) | 130G0625 | 2 |
| NUT-HEX,6MM (Ref # 311) | 311B0600 | 2 |
| WASHER-SPRING,6MM (Ref # 461) | 461F0600 | 2 |