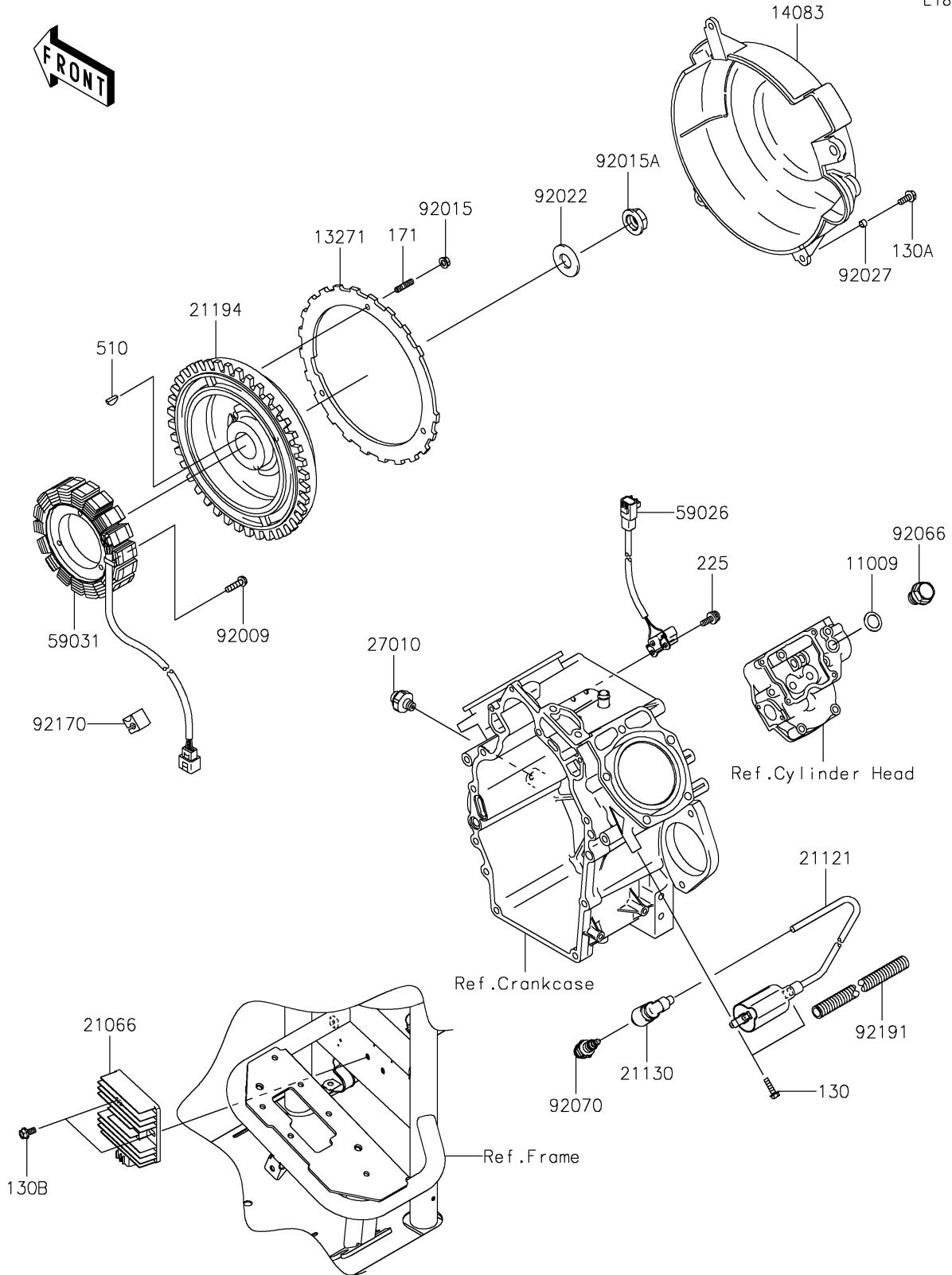


2020 MULE™ 4010 TRANS4x4® CAMO PARTS DIAGRAM

Generator/Ignition Coil

E1811



2020 MULE™ 4010 TRANS4x4® CAMO PARTS LIST

Generator/Ignition Coil

| ITEM NAME | PART NUMBER | QUANTITY |
|--|-------------|----------|
| GASKET,16X24X1 (Ref # 11009) | 11009-2566 | 1 |
| PLATE (Ref # 13271) | 13271-2269 | 1 |
| COVER-FLYWHEEL (Ref # 14083) | 14083-2052 | 1 |
| REGULATOR-VOLTAGE (Ref # 21066) | 21066-0717 | 1 |
| COIL-IGNITION (Ref # 21121) | 21121-2092 | 2 |
| CAP-SPARK PLUG (Ref # 21130) | 21130-2060 | 2 |
| FLYWHEEL-COMP (Ref # 21194) | 21194-2352 | 1 |
| SWITCH,OIL PRESSURE (Ref # 27010) | 27010-1313 | 1 |
| COIL-PULSING (Ref # 59026) | 59026-0559 | 1 |
| COIL-CHARGING (Ref # 59031) | 59031-2136 | 1 |
| SCREW,6X25 (Ref # 92009) | 92009-2273 | 3 |
| NUT,FLANGED,6MM (Ref # 92015) | 92015-1367 | 3 |
| NUT (Ref # 92015A) | 92015-2167 | 1 |
| WASHER (Ref # 92022) | 92022-2229 | 1 |
| COLLAR,6.2X7.8X5 (Ref # 92027) | 92027-2096 | 3 |
| PLUG,DRAIN (Ref # 92066) | 92066-2099 | 1 |
| PLUG-SPARK,BPR2ES(NGK),SOLID (Ref # 92070) | 92070-2110 | 2 |
| CLAMP (Ref # 92170) | 92170-2056 | 1 |
| TUBE (Ref # 92191) | 92191-2124 | 1 |
| BOLT-FLANGED,5X18 (Ref # 130) | 130BA0518 | 4 |
| BOLT-FLANGED,6X16 (Ref # 130A) | 130BA0616 | 3 |
| BOLT-FLANGED,6X14 (Ref # 130B) | 130BB0614 | 2 |
| BOLT-STUD,6X18 (Ref # 171) | 171BA0618 | 3 |
| SCREW-PAN-WSP-CROS,4X14 (Ref # 225) | 225AA0414 | 2 |
| KEY-WOODRUFF (Ref # 510) | 510A5100 | 1 |