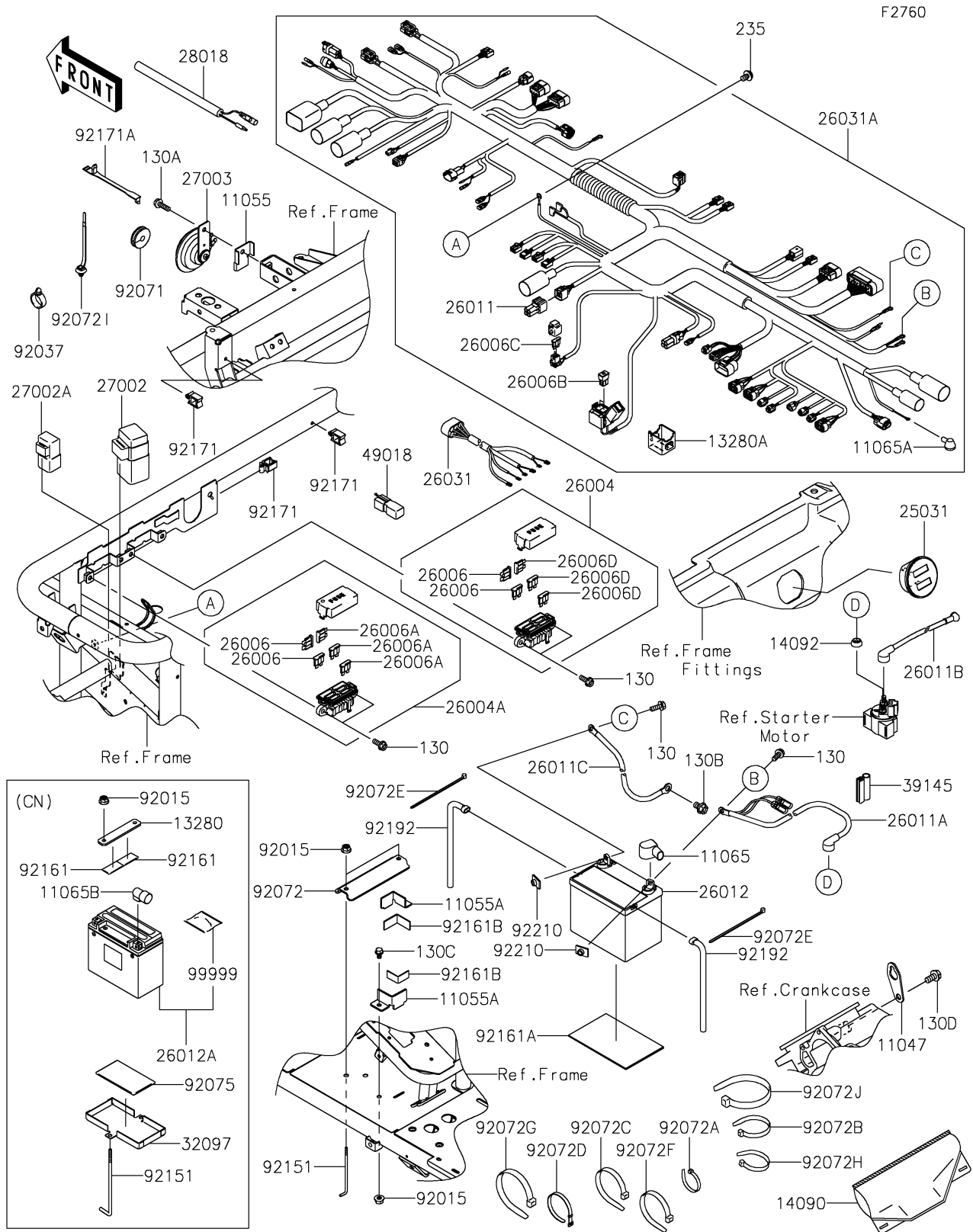


2020 MULE™ 4010 TRANS4x4® PARTS DIAGRAM

Chassis Electrical Equipment



2020 MULE™ 4010 TRANS4x4® PARTS LIST

Chassis Electrical Equipment

ITEM NAME	PART NUMBER	QUANTITY
BRACKET,F.BLACK (Ref # 11047)	11047-2056-9H	1
BRACKET,HORN (Ref # 11055)	11055-0167	1
CAP,NEUTRAL SW. (Ref # 11065A)	11065-0726	1
CAP,BATTERY(+) (Ref # 11065B)	11065-7502	1
HOLDER,BATTERY (Ref # 13280)	13280-7505	1
HOLDER (Ref # 13280A)	13280-7508	1
COVER,COUPLER (Ref # 14090)	14090-1611	1
COVER,MAGNETIC SW. (Ref # 14092)	14092-0851	1
METER-ASSY (Ref # 25031)	25031-0829	1
FUSE-ASSY (Ref # 26004)	26004-0018	1
FUSE-ASSY (Ref # 26004A)	26004-0019	1
FUSE,BLADE,30A,GREEN (Ref # 26006)	26006-0004	4
FUSE,BLADE,10A,RED (Ref # 26006A)	26006-0005	3
FUSE,SLOW BLOW,BT,40A,GREEN (Ref # 26006B)	26006-0014	2
FUSE,7.5A (Ref # 26006C)	26006-0015	2
FUSE,BLADE,20A,YELLOW (Ref # 26006D)	26006-1051	3
WIRE-LEAD (Ref # 26011)	26011-0037	1
WIRE-LEAD,BATTERY(+) (Ref # 26011A)	26011-0813	1
WIRE-LEAD,STARTER (Ref # 26011B)	26011-0815	1
WIRE-LEAD,BATTERY(-) (Ref # 26011C)	26011-7516	1
BATTERY,YTX20L-BS,12V 18AH (Ref # 26012A)	26012-0787	1
HARNESS (Ref # 26031)	26031-2080	1
HARNESS,MAIN (Ref # 26031A)	26031-2459	1
RELAY-ASSY (Ref # 27002)	27002-1068	1
RELAY-ASSY (Ref # 27002A)	27002-1088	1
HORN (Ref # 27003)	27003-1330	1
RESISTOR (Ref # 28018)	28018-0553	1
CASE-BATTERY (Ref # 32097)	32097-7501	1
TRIM-SEAL (Ref # 39145)	39145-0046	1

2020 MULE™ 4010 TRANS4x4® PARTS LIST

Chassis Electrical Equipment

ITEM NAME	PART NUMBER	QUANTITY
DIODE (Ref # 49018)	49018-0005	1
CLAMP,HOSE (Ref # 92037)	92037-1827	2
GROMMET (Ref # 92071)	92071-1136	1
BAND,L=123 (Ref # 92072A)	92072-030	3
BAND,L=149 (Ref # 92072B)	92072-031	2
BAND,L=218 (Ref # 92072C)	92072-032	2
BAND,L=186 (Ref # 92072D)	92072-056	1
BAND,L=202 (Ref # 92072F)	92072-1195	1
BAND,L=250 (Ref # 92072G)	92072-1237	2
BAND,L=188 (Ref # 92072H)	92072-1239	16
BAND,OS170-FT7(BLACK) (Ref # 92072I)	92072-1414	2
BAND,L=368.3 (Ref # 92072J)	92072-3872	4
DAMPER (Ref # 92075)	92075-1076	1
BOLT,BATTERY (Ref # 92151)	92151-1897	2
DAMPER (Ref # 92161)	92161-0032	2
CLAMP (Ref # 92171)	92171-0290	3
CLAMP (Ref # 92171A)	92171-1365	1
BOLT NUT KIT (Ref # 99999)	99999-0311	1
BOLT-FLANGED,6X20 (Ref # 130A)	130BA0620	1
BOLT-FLANGED,8X12 (Ref # 130B)	130BA0812	1
BOLT-FLANGED,8X16 (Ref # 130D)	130BA0816	1
SCREW-PAN-WP-CROS,6X10 (Ref # 235)	235AA0610	1