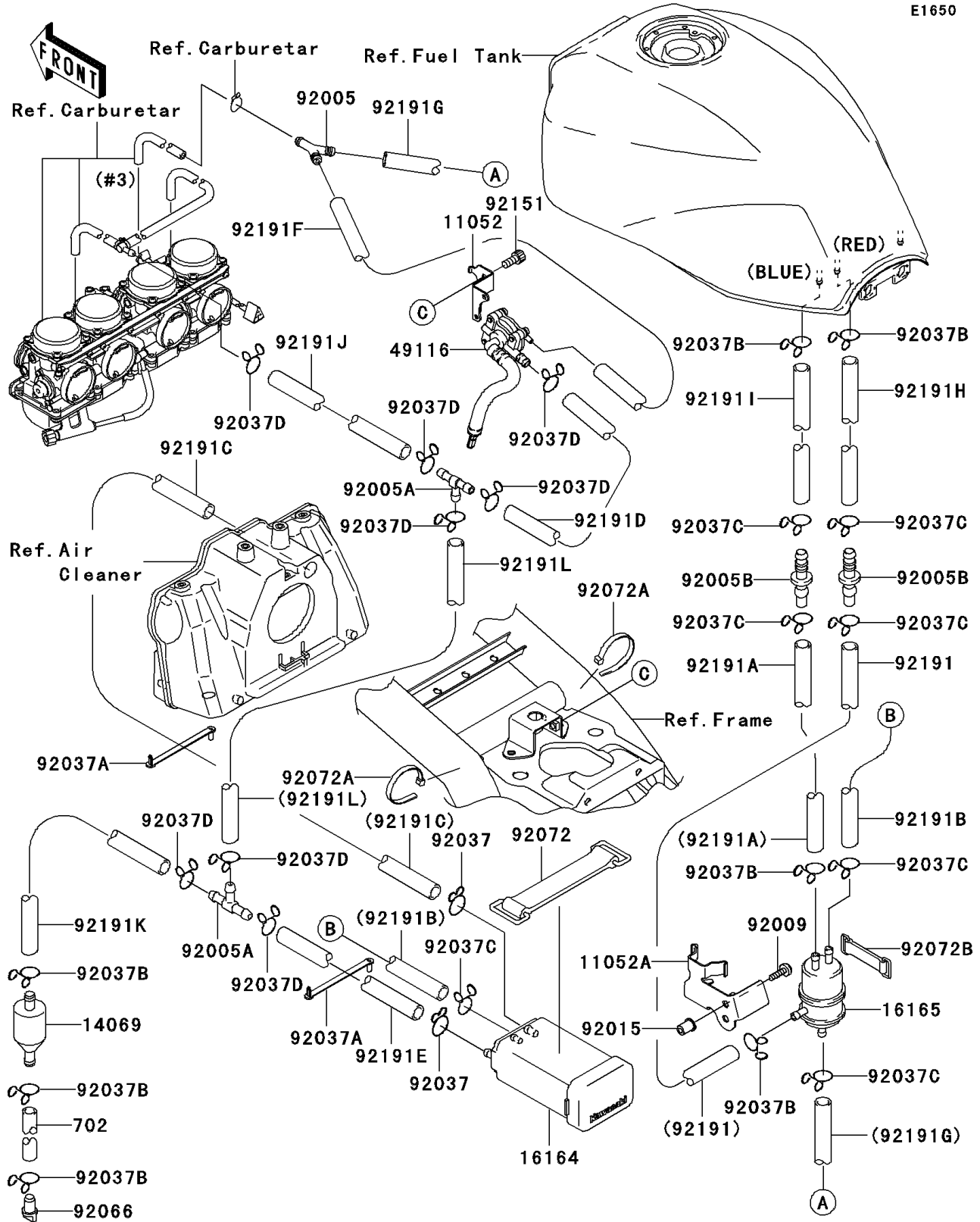


2003 ZRX1200R PARTS DIAGRAM

Fuel Evaporative System

E1650



2003 ZRX1200R PARTS LIST

Fuel Evaporative System

ITEM NAME	PART NUMBER	QUANTITY
BRACKET,FUEL TANK DAMPER (Ref # 11052)	11052-1145	1
BRACKET (Ref # 11052A)	11052-1146	1
BREATHER (Ref # 14069)	14069-1051	1
CANISTER (Ref # 16164)	16164-1070	1
SEPARATOR (Ref # 16165)	16165-1070	1
VALVE-ASSY (Ref # 49116)	49116-1187	1
FITTING,TUBE (Ref # 92005)	92005-1034	1
FITTING,T-TYPE (Ref # 92005A)	92005-1119	2
FITTING (Ref # 92005B)	92005-1206	2
SCREW,6X14 (Ref # 92009)	92009-1662	2
NUT (Ref # 92015)	92015-1700	2
CLAMP,HOSE (Ref # 92037)	92037-1104	2
CLAMP,SPEED,L=58 (Ref # 92037A)	92037-1163	2
CLAMP,TUBE (Ref # 92037B)	92037-147	7
CLAMP (Ref # 92037C)	92037-1712	7
CLAMP,TUBE (Ref # 92037D)	92037-1972	8
PLUG,DRAIN (Ref # 92066)	92066-1211	1
BAND,L=100 (Ref # 92072)	92072-071	1
BAND,L=250 (Ref # 92072A)	92072-1237	2
BAND,L=50 (Ref # 92072B)	92072-1419	1
BOLT,SOCKET,5X10 (Ref # 92151)	92151-1212	1
TUBE,SEPARATOR-TANK,RED (Ref # 92191)	92191-1581	1
TUBE-RUBBER (Ref # 702)	702A0760	1
TUBE,TANK-SEPARATOR,BULE (Ref # 92191A)	92191-1582	1
TUBE,SEPARATOR-CANISTER,BULE (Ref # 92191B)	92191-1583	1
TUBE,CANISTER-CLEANER,GREEN (Ref # 92191C)	92191-1584	1
TUBE,FITTING-VALVE,YELLOW (Ref # 92191D)	92191-1585	1
TUBE,FITTING-CANISTER,YELLOW (Ref # 92191E)	92191-1586	1
TUBE,CARBURETOR-VALVE,WHITE (Ref # 92191F)	92191-1587	1

2003 ZRX1200R PARTS LIST

Fuel Evaporative System

ITEM NAME	PART NUMBER	QUANTITY
TUBE,SEPARATOR-FITTING,WHITE (Ref # 92191G)	92191-1588	1
TUBE,RED (Ref # 92191H)	92191-1649	1
TUBE,BULE (Ref # 92191I)	92191-1650	1
TUBE,7X12X165,YELLOW (Ref # 92191J)	92191-1651	1
TUBE,7X11X430 (Ref # 92191K)	92191-1652	1
TUBE,7X12X235,YELLOW (Ref # 92191L)	92191-1670	1