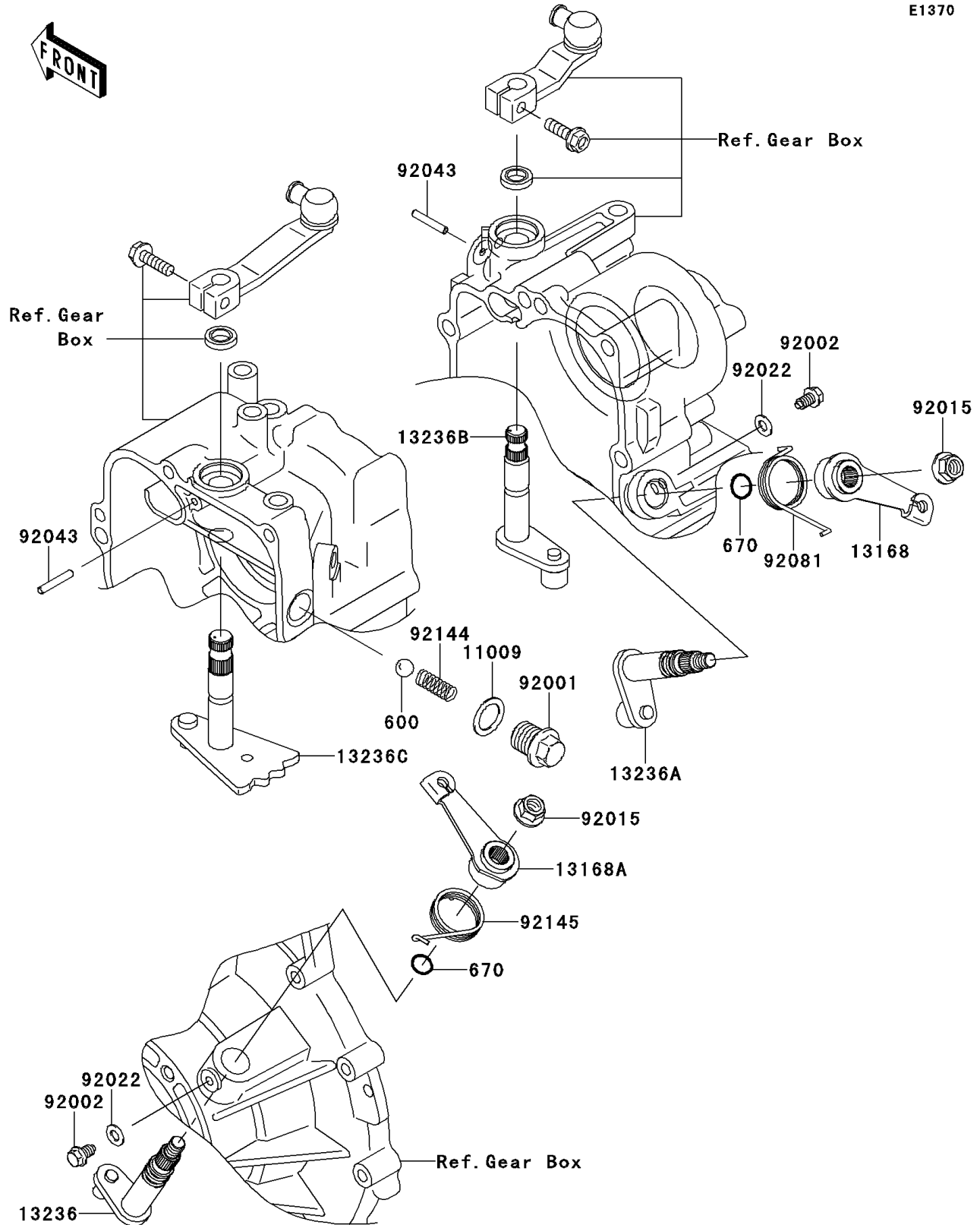


# 2009 Mule 4010 4x4 PARTS DIAGRAM

## Gear Change Mechanism

E1370



## 2009 Mule 4010 4x4 PARTS LIST

### Gear Change Mechanism

| ITEM NAME                                       | PART NUMBER | QUANTITY |
|---|-------------|----------|
| GASKET,15.5X22X1 (Ref # 11009)                  | 11009-1008  | 1        |
| LEVER (Ref # 13168)                             | 13168-1268  | 1        |
| LEVER,DIFF LOCK (Ref # 13168A)                  | 13168-1523  | 1        |
| LEVER-COMP,DIFF LOCK (Ref # 13236)              | 13236-1219  | 1        |
| LEVER-COMP,CHANGE,2WD/4WD (Ref # 13236A)        | 13236-1247  | 1        |
| LEVER-COMP,HI/LOW (Ref # 13236B)                | 13236-1360  | 1        |
| LEVER-COMP,FR/RR (Ref # 13236C)                 | 13236-1366  | 1        |
| BOLT,NEUTRAL POSITION (Ref # 92001)             | 92001-1037  | 1        |
| BOLT,FLANGED-SMALL,6X8.1X2.5 (Ref # 92002)      | 92002-1962  | 2        |
| NUT,FLANGED,8MM (Ref # 92015)                   | 92015-1406  | 2        |
| WASHER,6.1X12X1 (Ref # 92022)                   | 92022-077   | 2        |
| PIN (Ref # 92043)                               | 92043-1415  | 2        |
| SPRING (Ref # 92081)                            | 92081-1853  | 1        |
| SPRING,CHANGE LEVER,FR/RR (Ref # 92144)         | 92144-1702  | 1        |
| SPRING (Ref # 92145)                            | 92145-0253  | 1        |
| "BALL-STEEL,13/32",,2017-03-16 13:3 (Ref # 600) | 600A1300    | 1        |
| O RING,10MM (Ref # 670)                         | 670B2010    | 2        |