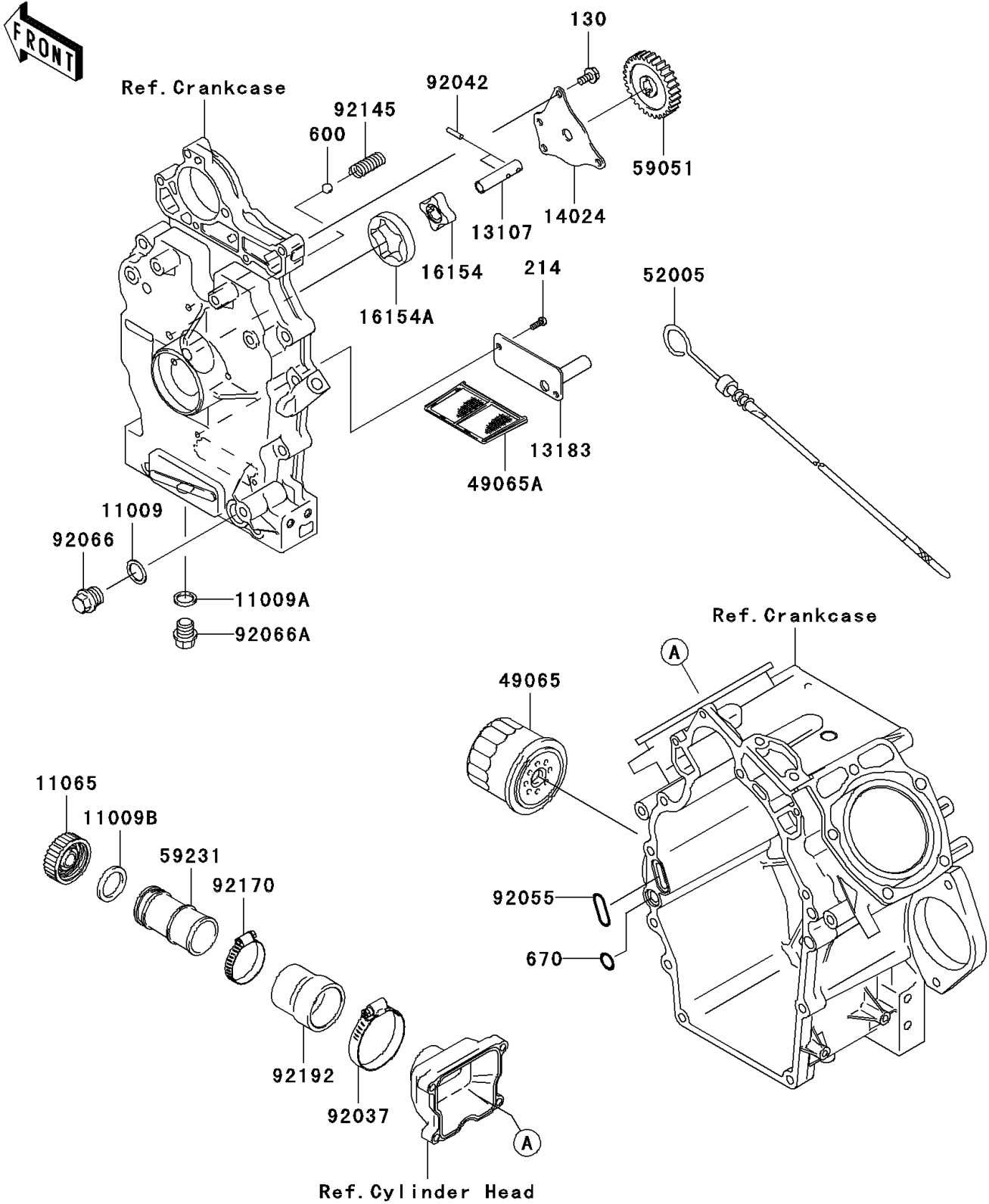


2011 MULE™ 4010 TRANS4x4® PARTS DIAGRAM

Oil Pump/Oil Filter

E1710



2011 MULE™ 4010 TRANS4x4® PARTS LIST

Oil Pump/Oil Filter

| ITEM NAME | PART NUMBER | QUANTITY |
|---|-------------|----------|
| GASKET,16.2X22X1 (Ref # 11009) | 11009-1467 | 1 |
| GASKET (Ref # 11009A) | 11009-2175 | 1 |
| GASKET,OIL GAUGE (Ref # 11009B) | 11009-2346 | 1 |
| CAP (Ref # 11065) | 11065-1167 | 1 |
| SHAFT (Ref # 13107) | 13107-2099 | 1 |
| PLATE (Ref # 13183) | 13183-2419 | 1 |
| COVER (Ref # 14024) | 14024-2113 | 1 |
| ROTOR-PUMP,IN (Ref # 16154) | 16154-2053 | 1 |
| ROTOR-PUMP,OUT (Ref # 16154A) | 16154-2054 | 1 |
| FILTER-OIL (Ref # 49065) | 49065-2071 | 1 |
| FILTER-OIL (Ref # 49065A) | 49065-2072 | 1 |
| GAUGE (Ref # 52005) | 52005-2149 | 1 |
| GEAR-SPUR (Ref # 59051) | 59051-2114 | 1 |
| FILLER (Ref # 59231) | 59231-7501 | 1 |
| CLAMP (Ref # 92037) | 92037-506 | 1 |
| PIN,DOWEL,4X15.8 (Ref # 92042) | 92042-014 | 2 |
| RING-O (Ref # 92055) | 92055-2086 | 1 |
| PLUG,16X11.5 (Ref # 92066) | 92066-2251 | 1 |
| PLUG,14X12 (Ref # 92066A) | 92066-2253 | 1 |
| SPRING (Ref # 92145) | 92145-2132 | 1 |
| CLAMP (Ref # 92170) | 92170-1036 | 1 |
| TUBE (Ref # 92192) | 92192-7502 | 1 |
| BOLT-FLANGED,6X12 (Ref # 130) | 130AA0612 | 3 |
| SCREW-PAN+,-,5X12 (Ref # 214) | 214AA0512 | 2 |
| "BALL-STEEL,13/32",,2017-03-16 13:3 (Ref # 600) | 600A1300 | 1 |
| O RING,11MM (Ref # 670) | 670B2011 | 1 |